



# Session 2 - Operations



CONROE ISD LEADS:  
**COMMUNITY COLLABORATIVE**

# Agenda



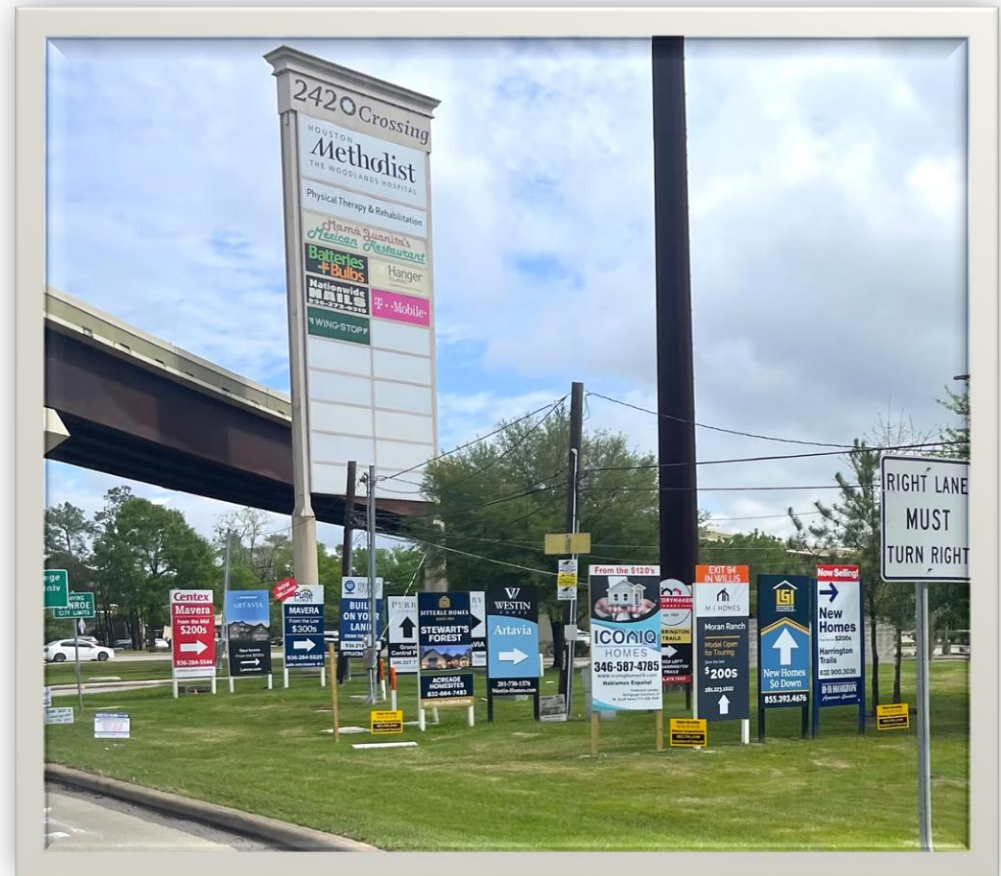
CONROE ISD LEADS:  
**COMMUNITY  
COLLABORATIVE**

8:00	Welcome and Overview of the Day	Dr. Curtis Null, Superintendent
8:15	Growth in Conroe ISD	Mr. Chris McCord, Assistant Superintendent Operations
8:45	School and Area Tour (Suchma Elementary); Transportation	Mr. Chris McCord & Mr. Juan Melendez Dr. Shellie Winkler
9:30	Bus Ride (Return to Jett Center)	All
9:45	Transportation in the District	Mr. Juan Melendez, Director of Transportation
10:15	Attendance Boundary Process	Mr. Chris McCord
10:45	Wrap-Up and Networking	All

# Growth



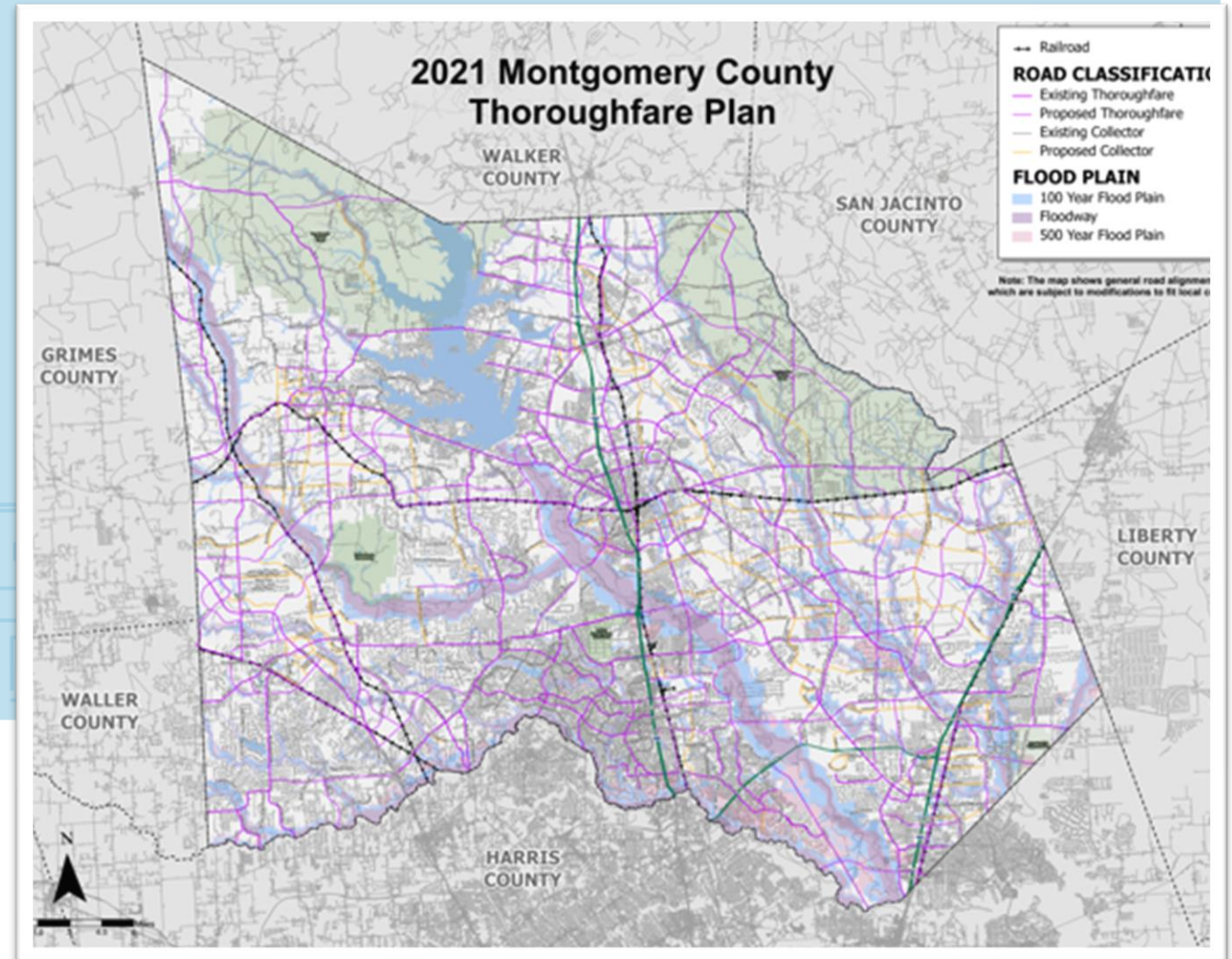
CONROE ISD LEADS:  
**COMMUNITY  
COLLABORATIVE**



# Road Impact

## Key Projects

- Old Conroe Road connection to Sgt. Ed Holcomb (City of Conroe & PCT 2)
- Townsen Blvd from SH 99 & Imperial Promenade ties to Townsen Blvd in Humble
- SH 105 East from 10<sup>th</sup> Street in Conroe to Business SH 105 near Cleveland
- SH 242 work both east and west of IH- 45



# Single Family Housing



*Over the next 10 years, PASA projects 35,676 single-family units (67% of total new housing projections).*

## **New Master Planned Communities**

Land in Conroe is now in high demand & several new, large communities have expanded or started development.

## **Manufactured Housing**

A dynamic shift is occurring in the development of manufactured housing. 4,696 new occupancies are projected across the District through 2032.

# Average Number of Students Per Household Type

Single-Family



0.56

Multi-Family

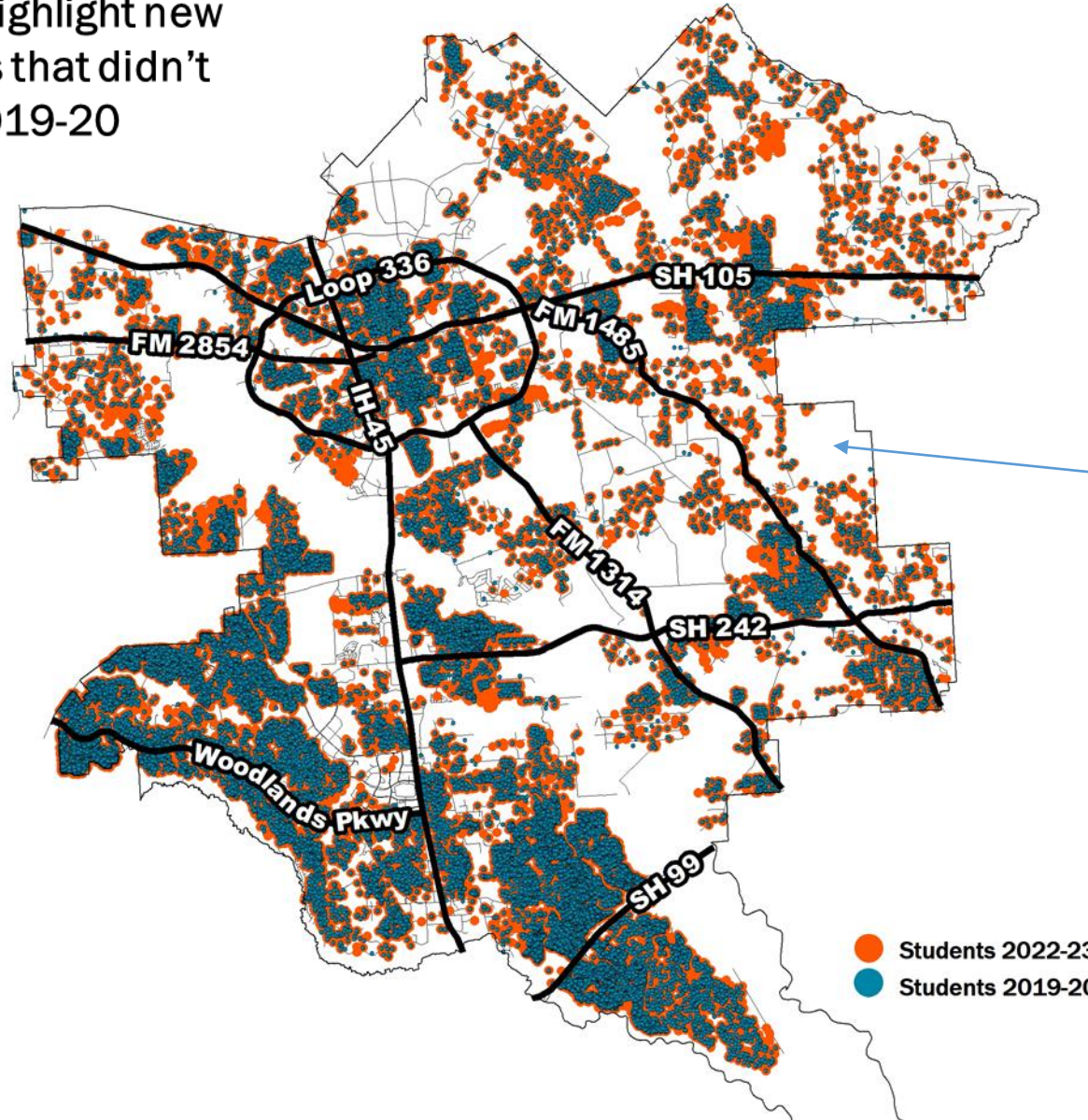


0.28



# Geo Coding as of 2022

Orange areas highlight new neighborhoods that didn't exist in 2019-20

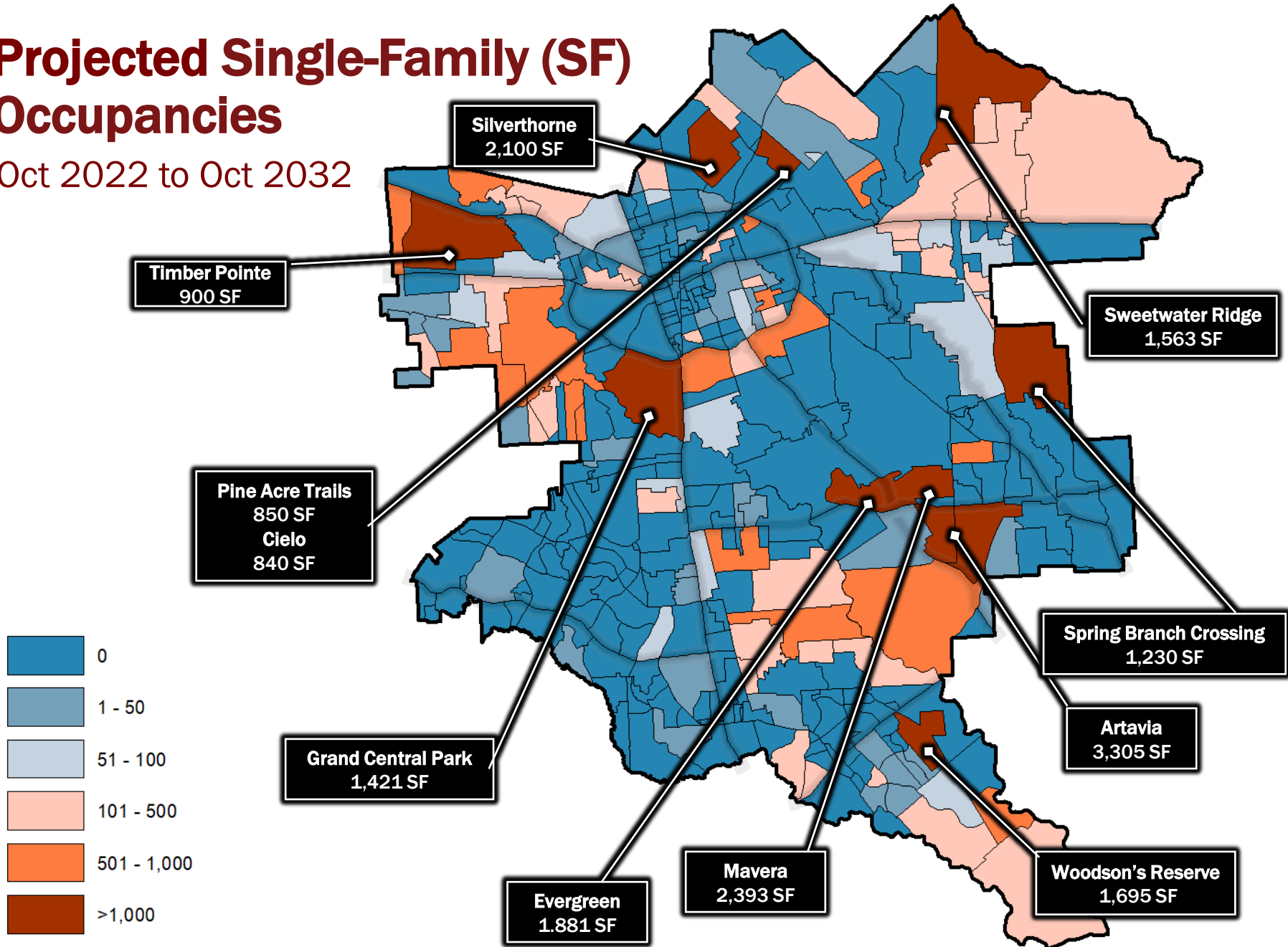


Projected to add 2618 K-12 students in this open section alone by 2031

# Projected Single-Family (SF) Occupancies

Oct 2022 to Oct 2032

Developer Note



INCLUDES MANUFACTURED HOUSING





# Projected Growth in Elementary Students

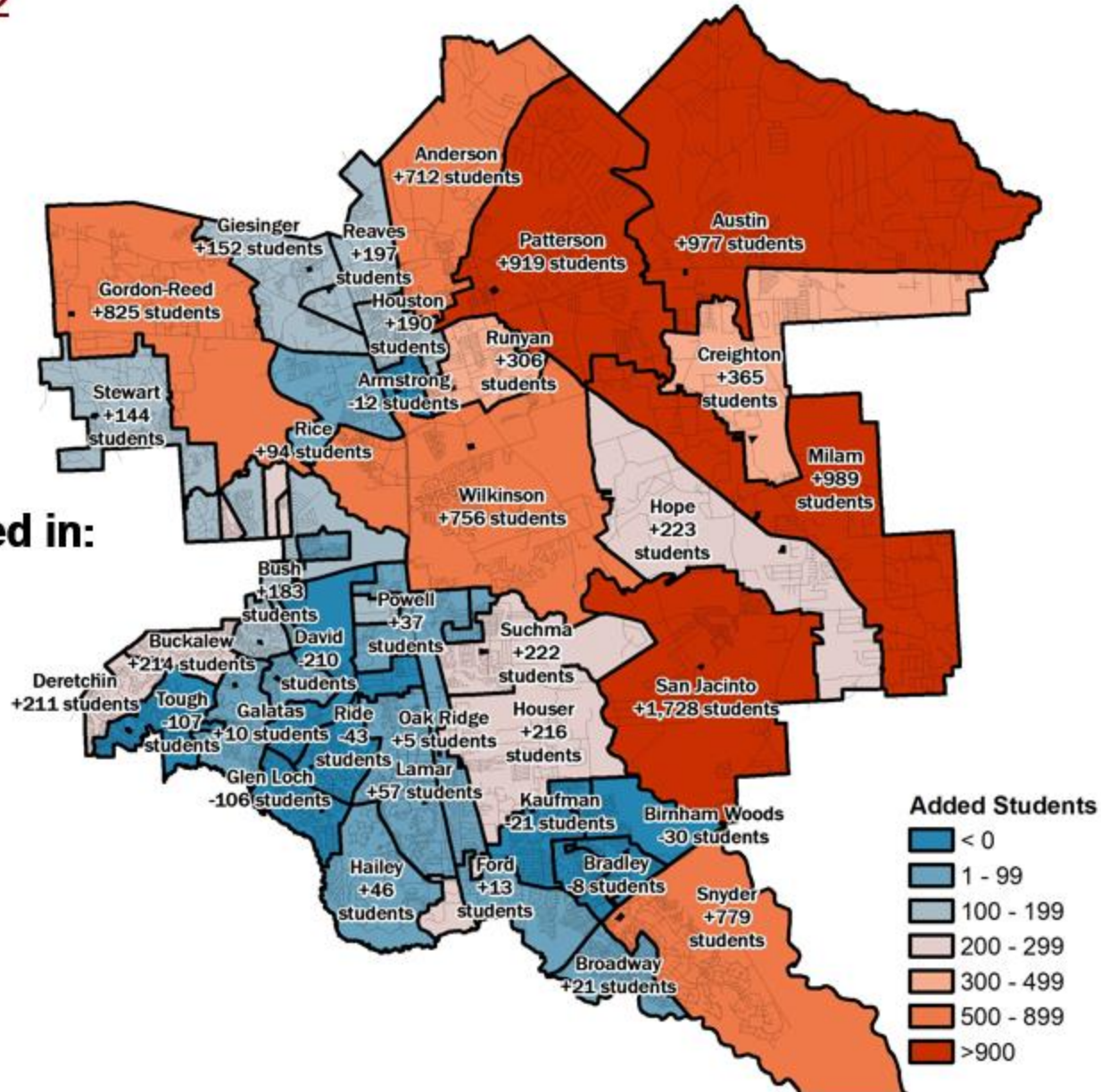
Oct 2022 to Oct 2032



NOTE: Shows projections before the creation of Bartlett Elementary

Most growth projected in:

- San Jacinto
- Milam
- Austin
- Patterson
- Anderson
- Gordon-Reed
- Wilkinson
- Snyder



# Projected Growth in Intermediate Students

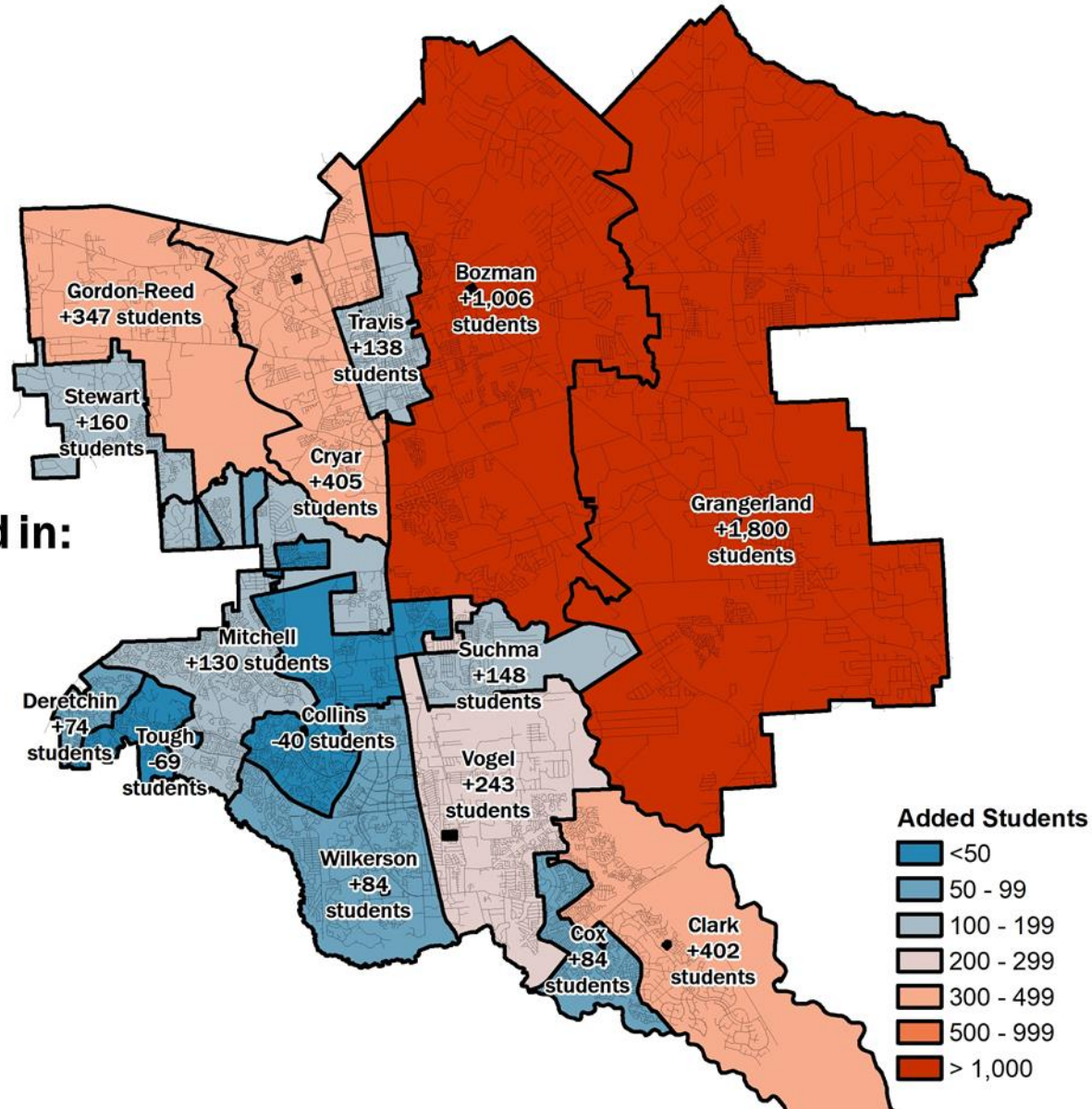
Oct 2022 to Oct 2032



NOTE: Shows projections before the creation of Veterans Memorial Intermediate

Most growth projected in:

- Grangerland
- Bozman
- Clark
- Cryar
- Gordon-Reed



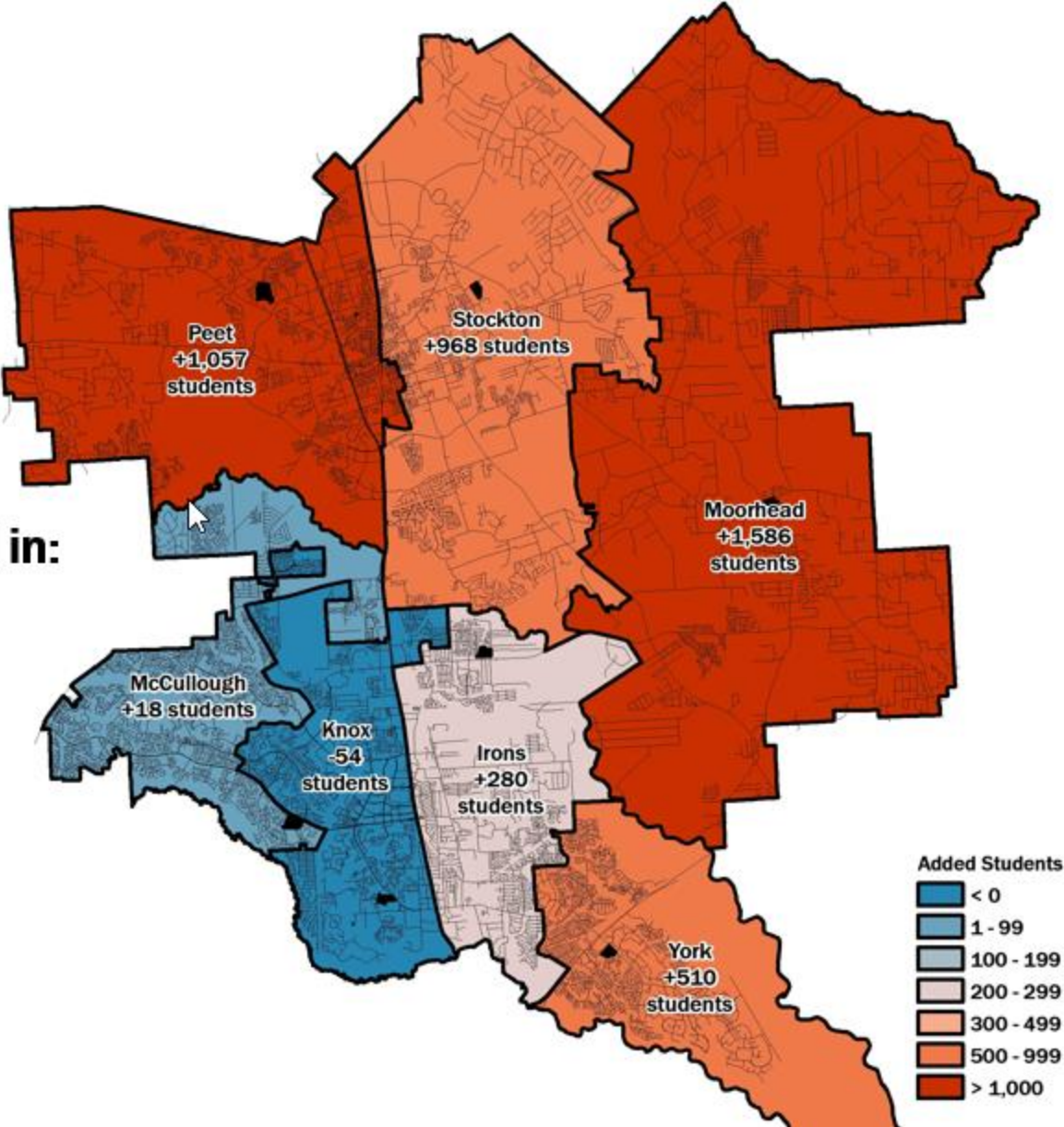
# Projected Growth in Junior High Students

Oct 2022 to Oct 2032



Most growth projected in:

- Moorhead
- Peet
- Stockton
- York



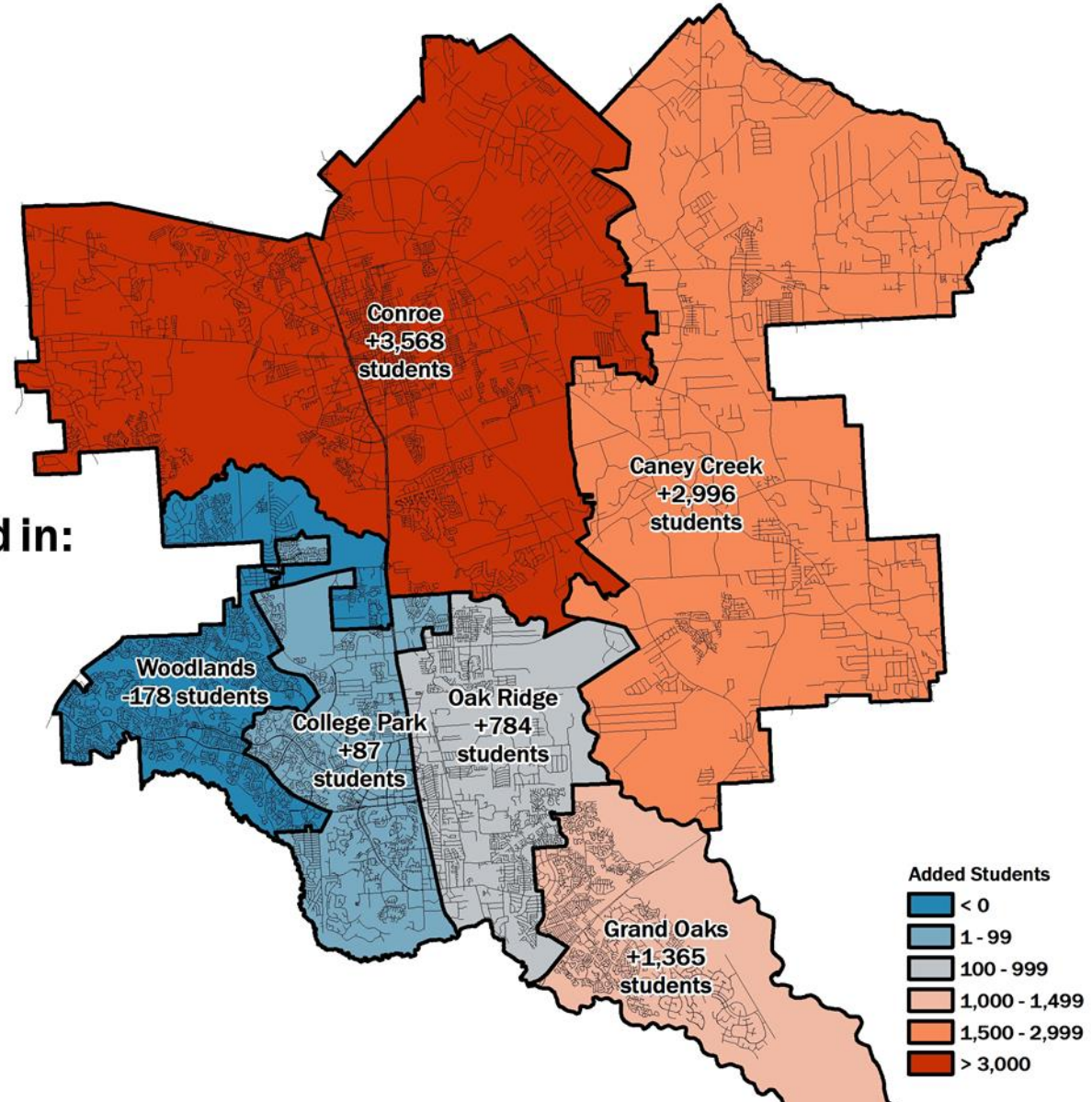
# Projected Growth in High School Students

Oct 2022 to Oct 2032



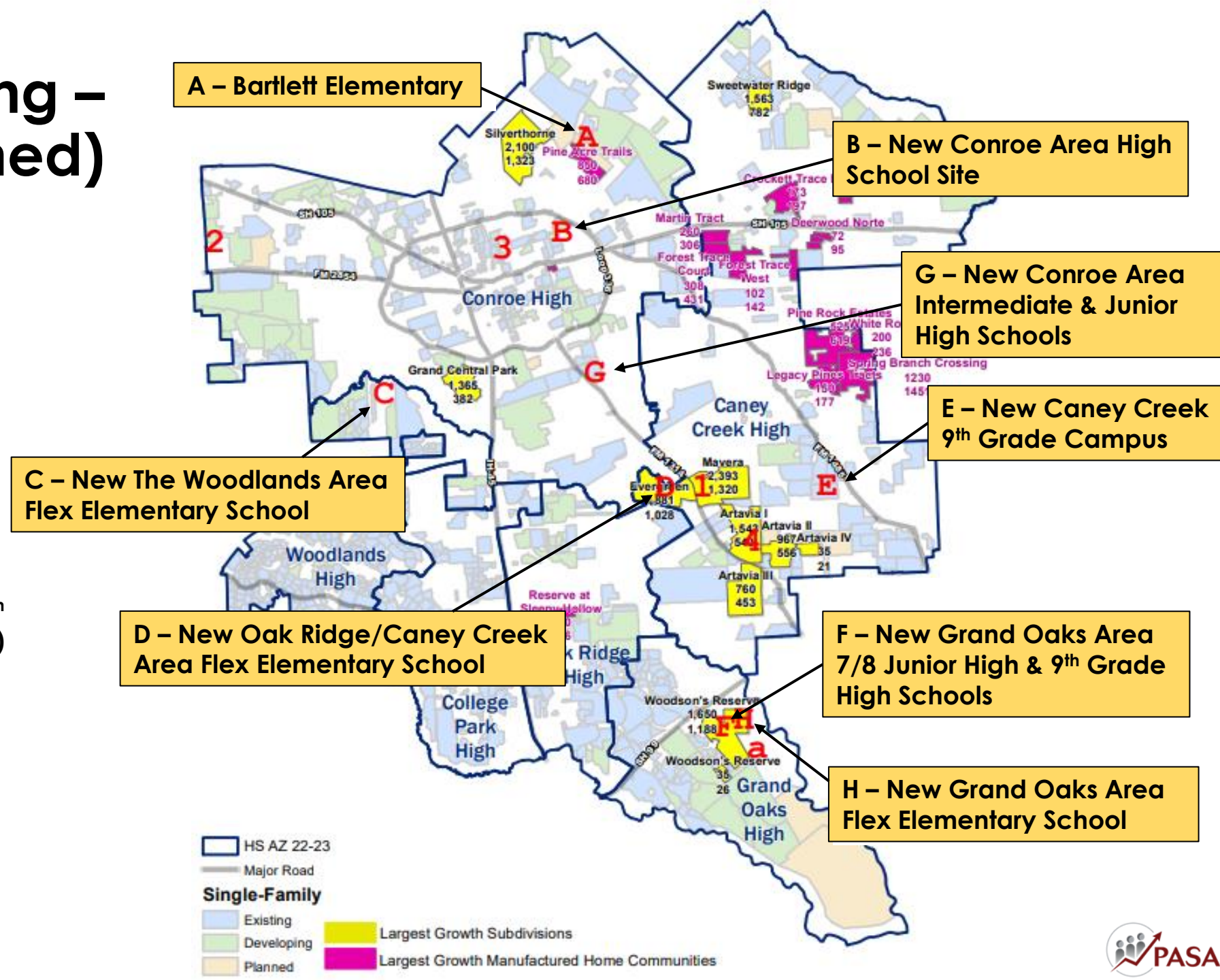
Most growth projected in:

- Conroe
- Caney Creek
- Grand Oaks



# Strategic Planning – CISD Land (Owned)

- A. 16 Acres - Bartlett Elementary (2024)
- B. 78 Acres - Conroe Area High School (2027)
- C. 20 Acres - Woodlands Area Flex Elementary School (2025)
- D. 25 Acres – Oak Ridge/Caney Creek Flex Elementary (2025)
- E. 72 Acres - Caney Creek High School Ninth (2027)
- F. 38 Acres – Grand Oaks Area Junior High (August 2027) and 9<sup>th</sup> Grade campuses (January 2027)
- G. 82 Acres – New Conroe Area Intermediate (2026) & Junior High (2027) campuses
- H. 17 Acres – Grand Oaks Area Flex Elementary (2027)

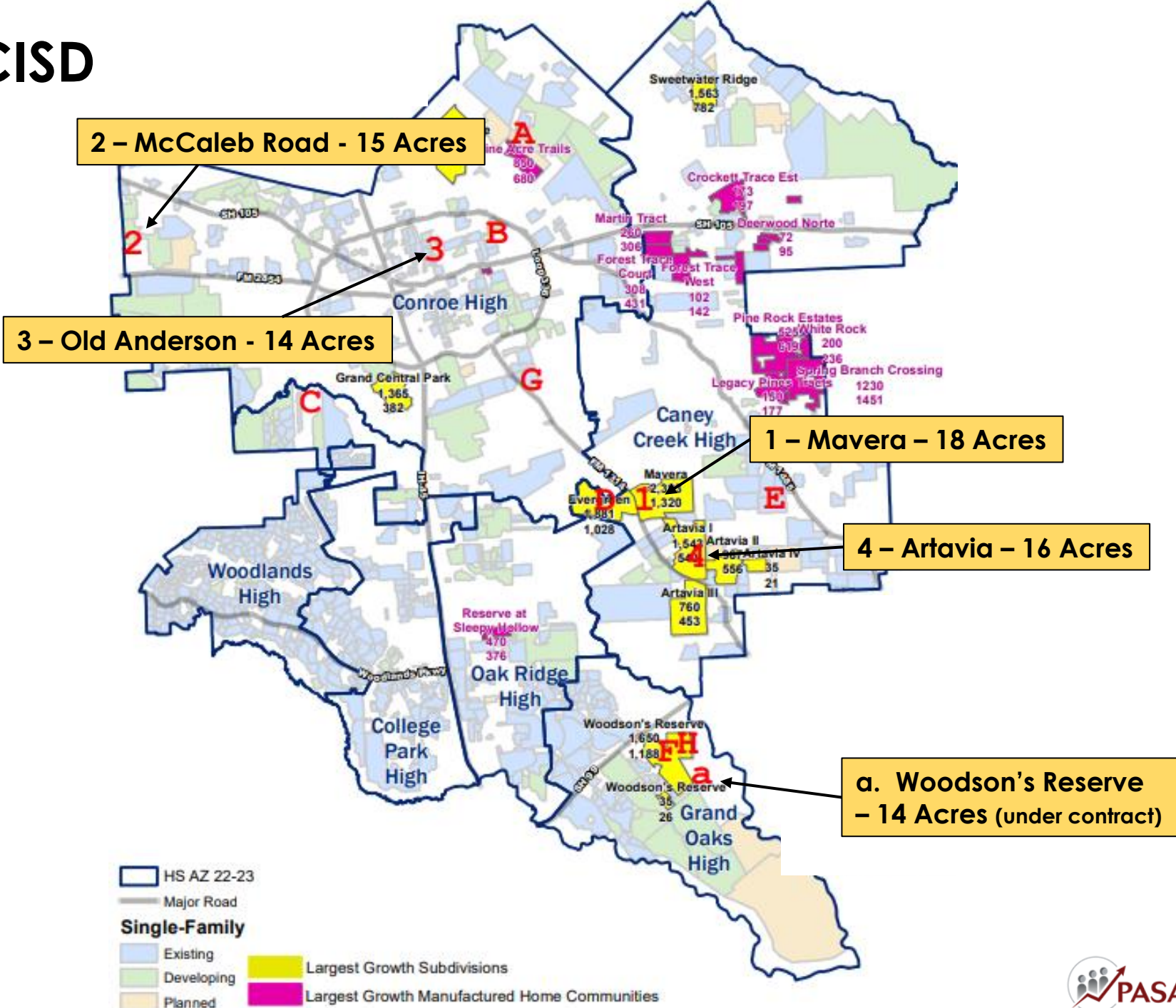


# Strategic Planning – CISD

## Land Inventory

### For Future Potential Builds

- 1. Maverera - 18 Acres
- 2. McCaleb - 15 Acres
- 3. Old Anderson - 14 Acres
- 4. Artavia - 16 Acres
  
- a. Woodson’s Reserve - 14 Acres (under contract)



# Field Trip!

## What to expect and know in advance:

- We will board a school bus right outside the door for free round-trip transportation
- We are visiting Suchma Elementary School (10261 Harpers School Road)
  - Opened in 2019
  - Principal is Jamie Almond
  - Two-story K-6
    - Capacity is 950
    - Current student population is 1400
    - 24 portable buildings are split between the east and west sides
    - Feeds into Irons Junior High School
    - Within the Oak Ridge High School Feeder
  - PK students within the Suchma zone attend Houser or Oak Ridge Elementary
  - Our tour guide once we arrive will be Dr. Shellie Winkler (Asst Supt of Elementary Schools)

CONROE ISD LEADS:  
COMMUNITY COLLABORATIVE



# Field Trip!

What to expect and know in advance:

- We will engage in a quick tour of the facility and then return back to this same location for information on
  - Transportation from Juan Melendez (Director of Transportation)
  - Zoning 101
  - Zoning activity (time permitting)



CONROE ISD LEADS:  
COMMUNITY COLLABORATIVE



# Field Trip!

Along the way of the trip

- Juan Melendez will be sharing insightful and relevant information regarding CISD Transportation



CONROE ISD LEADS:  
COMMUNITY COLLABORATIVE