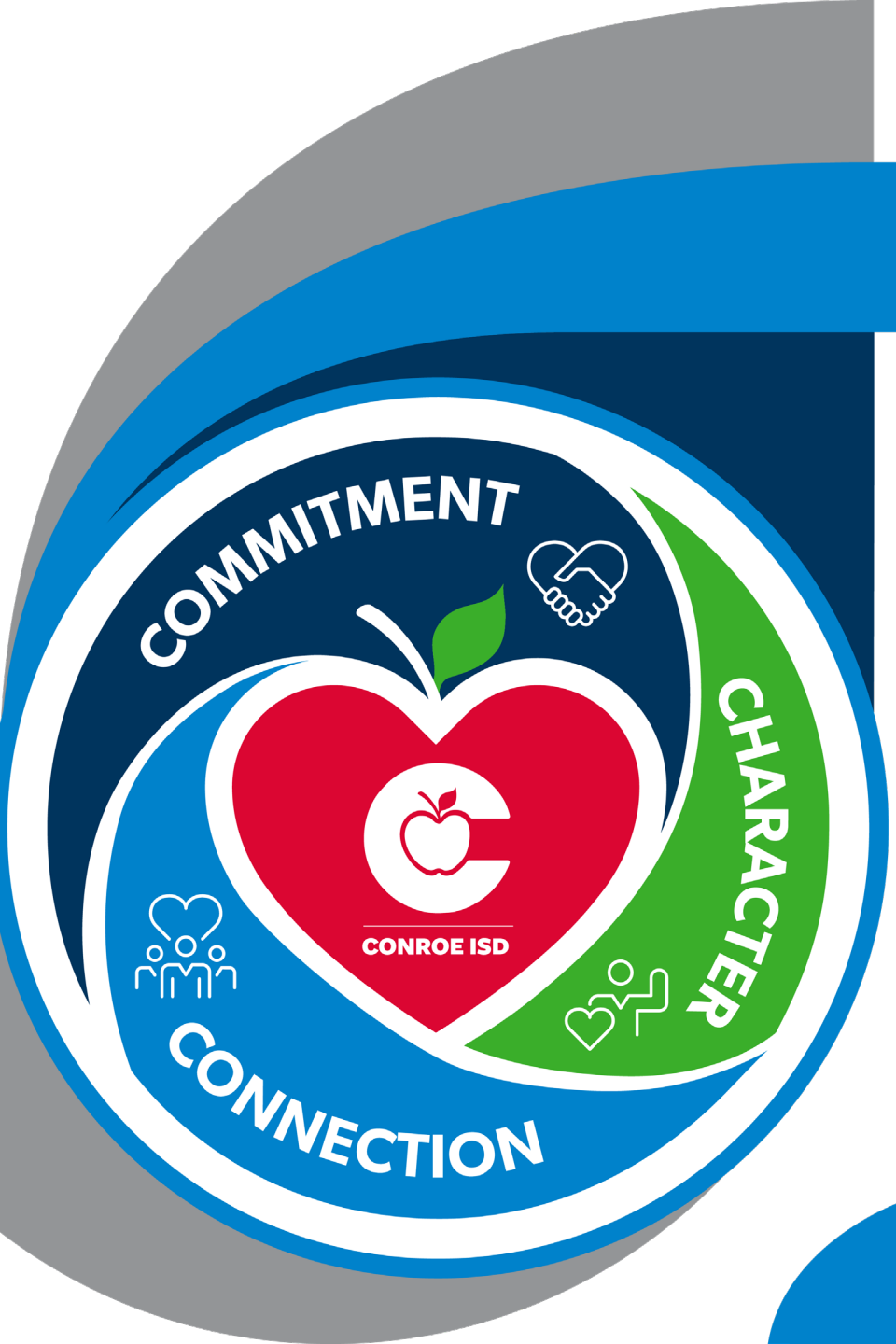




WELCOME

CONROE ISD LEADS:
**COMMUNITY
COLLABORATIVE**



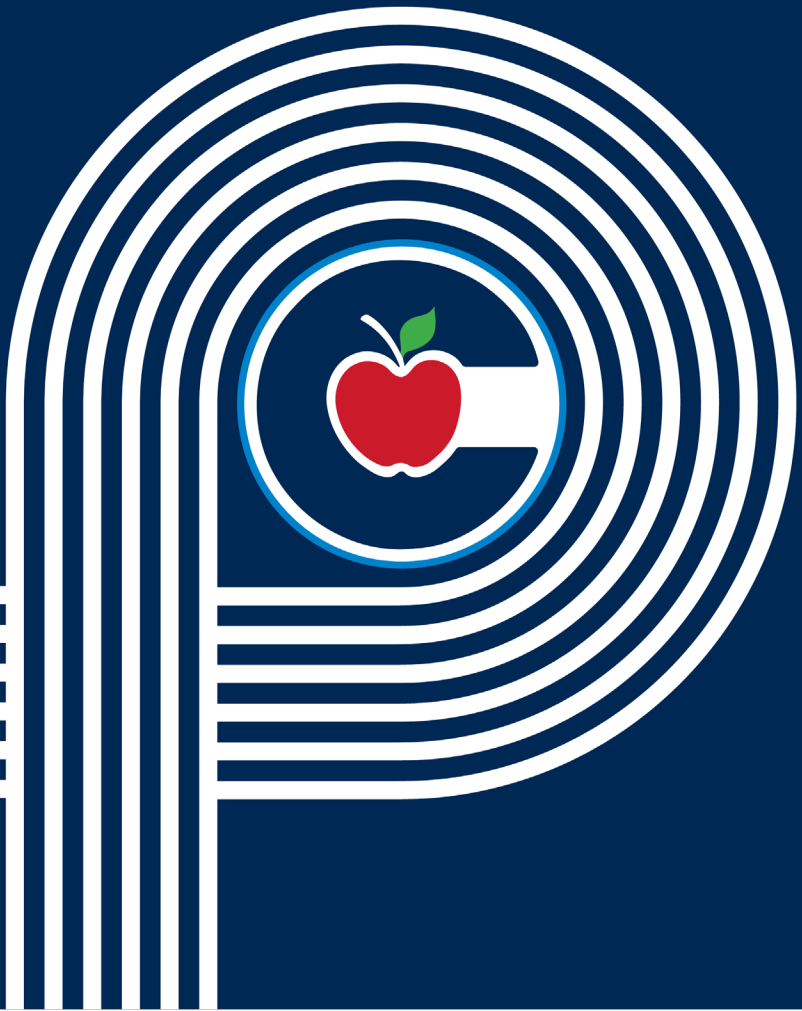
Overview of **CONROE ISD**

CONROE ISD LEADS:
**COMMUNITY
COLLABORATIVE**



INTRODUCTIONS

Conroe ISD BOARD OF TRUSTEES



Skeeter Hubert
President



Theresa Wagaman
1st Vice President



Stacey Chase
2nd Vice President



Datren Williams
Secretary



Melissa Dungan
Assistant Secretary

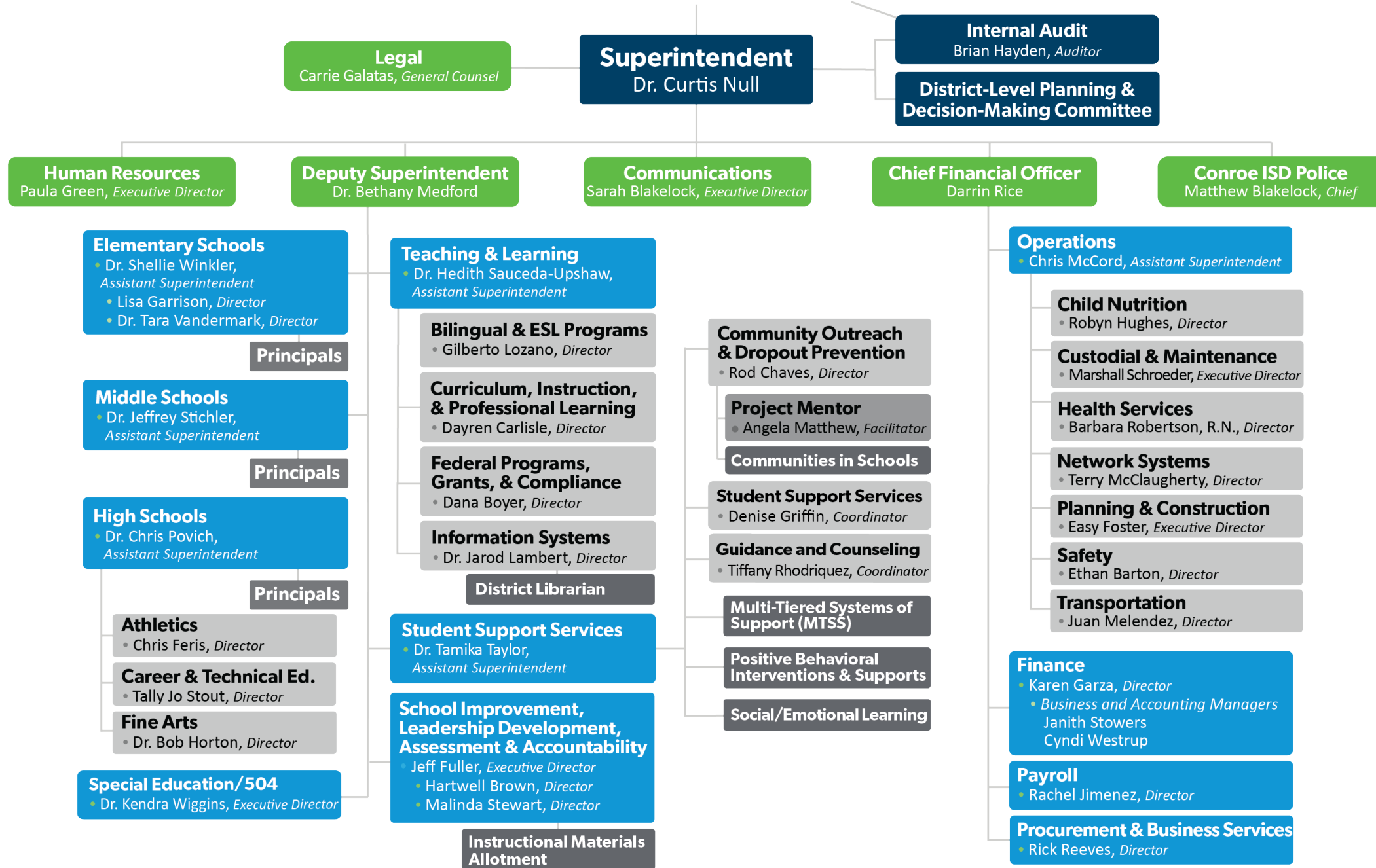


Tiffany Baumann
Nelson Trustee



Misty Odenweller
Trustee

Board of Trustees



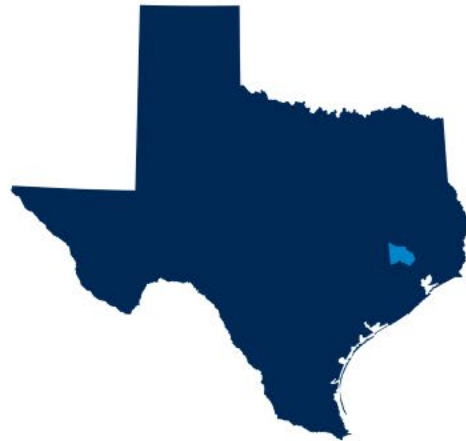
CONROE ISD BY THE NUMBERS



348
square miles

70
campuses

~73,000
students projected for 23-24



9th
largest district
in Texas



60th
largest district in
the United States



GROWING

CONROE ISD BY THE NUMBERS



GROWING



**largest
employer**
in Montgomery County



~ **9,000**
employees



10,000+
including subs



PRESENTED BY:



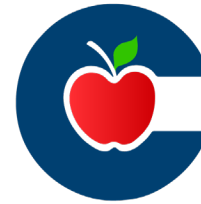
TEXAS FARM BUREAU
INSURANCE

**AMERICA'S
BEST LARGE
EMPLOYERS**

**Forbes
2024**

POWERED BY STATISTA

Fastest Growing City + Best Place to Live



CONROE
INDEPENDENT
SCHOOL DISTRICT

BEST SCHOOL DISTRICT
in Montgomery County

MOST DIVERSE SCHOOL DISTRICT
in Montgomery County

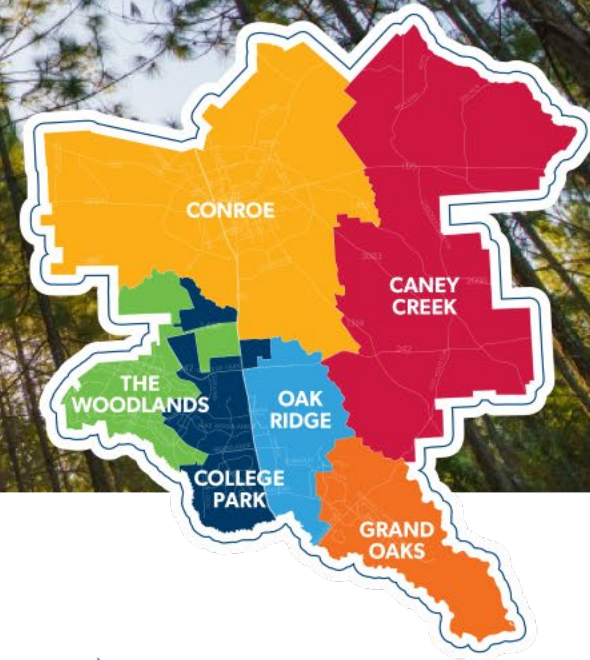
BEST PLACE TO TEACH
in Montgomery County

BEST SCHOOL DISTRICT FOR ATHLETES
in Montgomery County





ENROLLMENT GROWTH

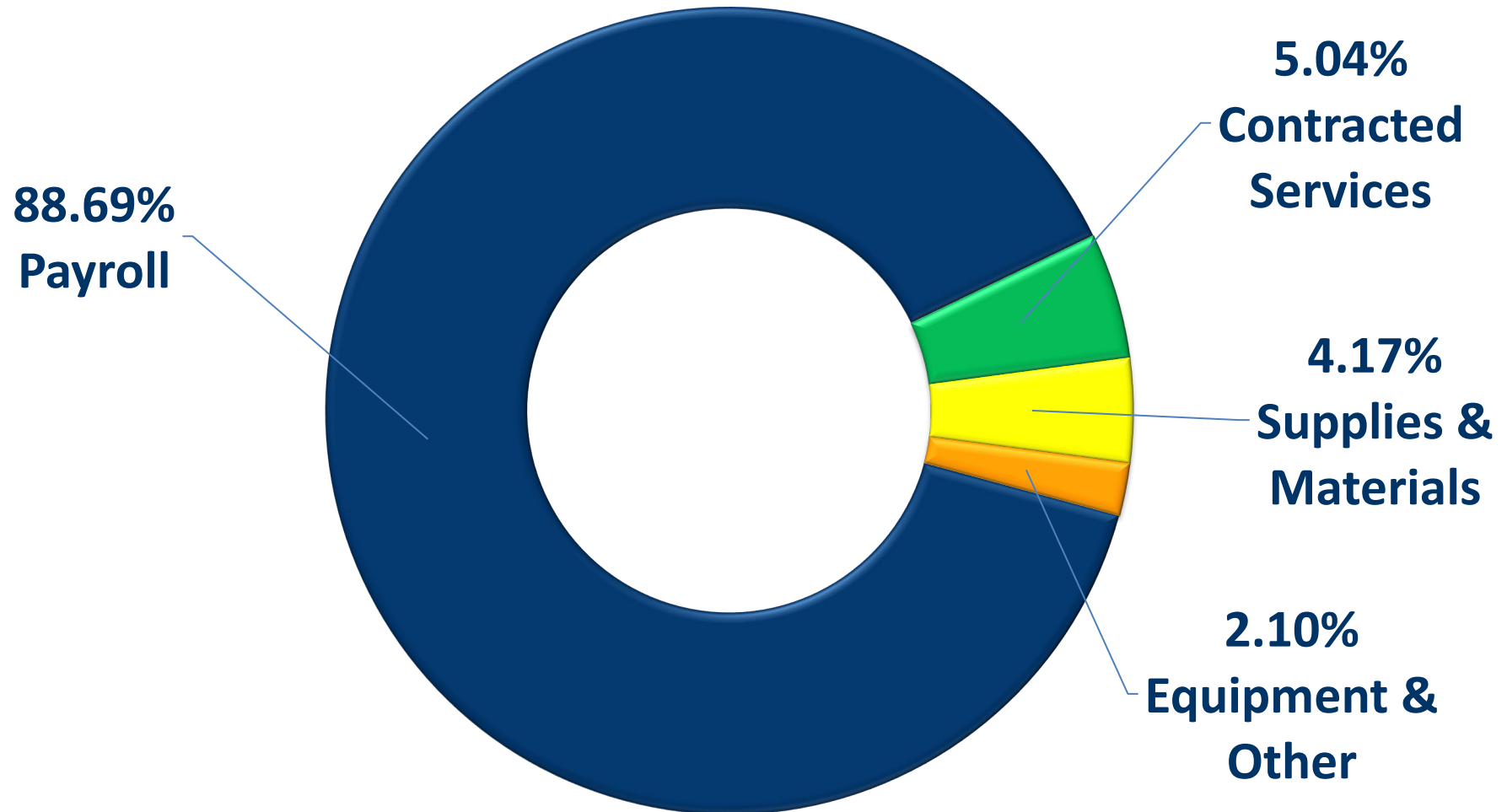


For over a **decade**, Conroe ISD grew by an average of **1,500 students** per year. **Since 2020**, Conroe ISD has grown by an average of **2,600 students** a year.

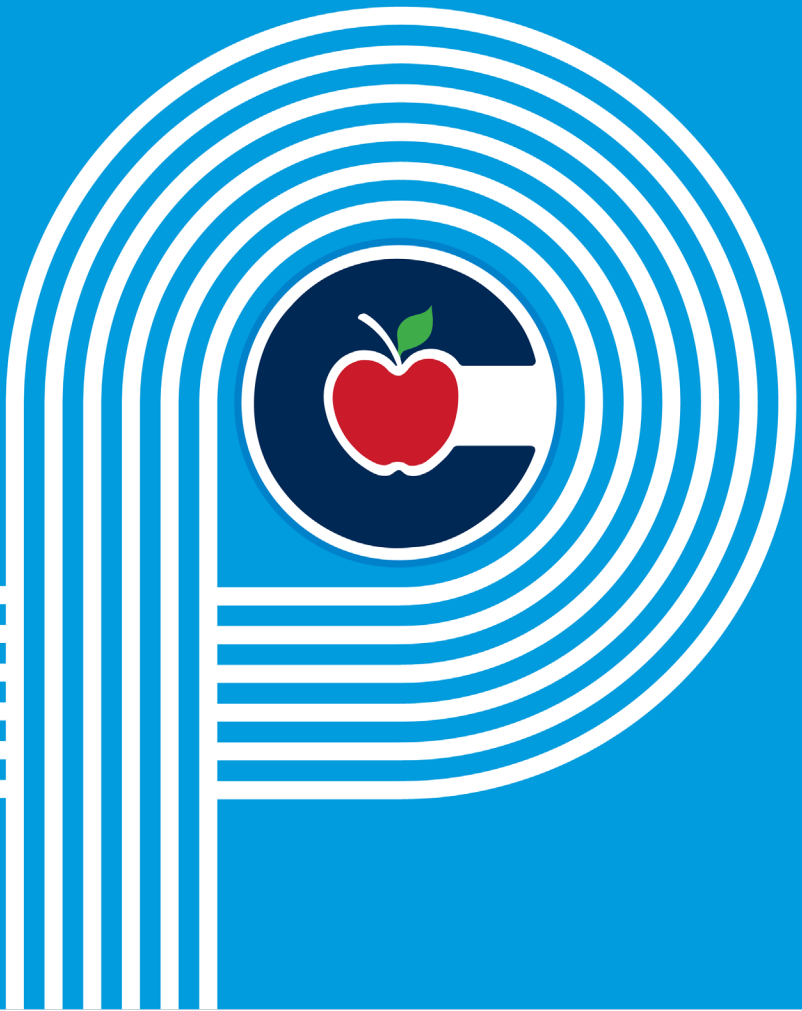


2023-2024 BUDGET

\$672,772,241



STATE SHARE vs. LOCAL SHARE

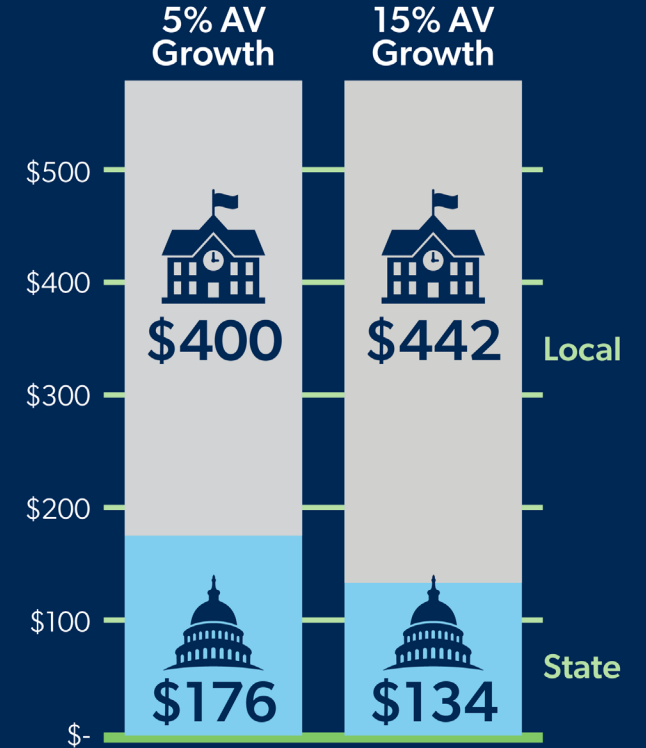


State share decreases.

As local share increases...

Although local appraised values (AV) may increase, **Conroe ISD does not receive an increase in funding to the maintenance & operations side of the budget** because the State reduces the funding it provides to the District, **dollar for dollar.**

Total Entitlement \$576 M
(based on State funding formula)



TWO SIDES OF THE TAX RATE



the TWO SIDES of SCHOOL DISTRICT TAX RATES

School district tax rates are comprised of two sides: the maintenance & operations and the debt service.

\$0.9621

Maintenance and Operations

Salaries, benefits, supplies, utilities, fuel, etc.

70.21 ¢

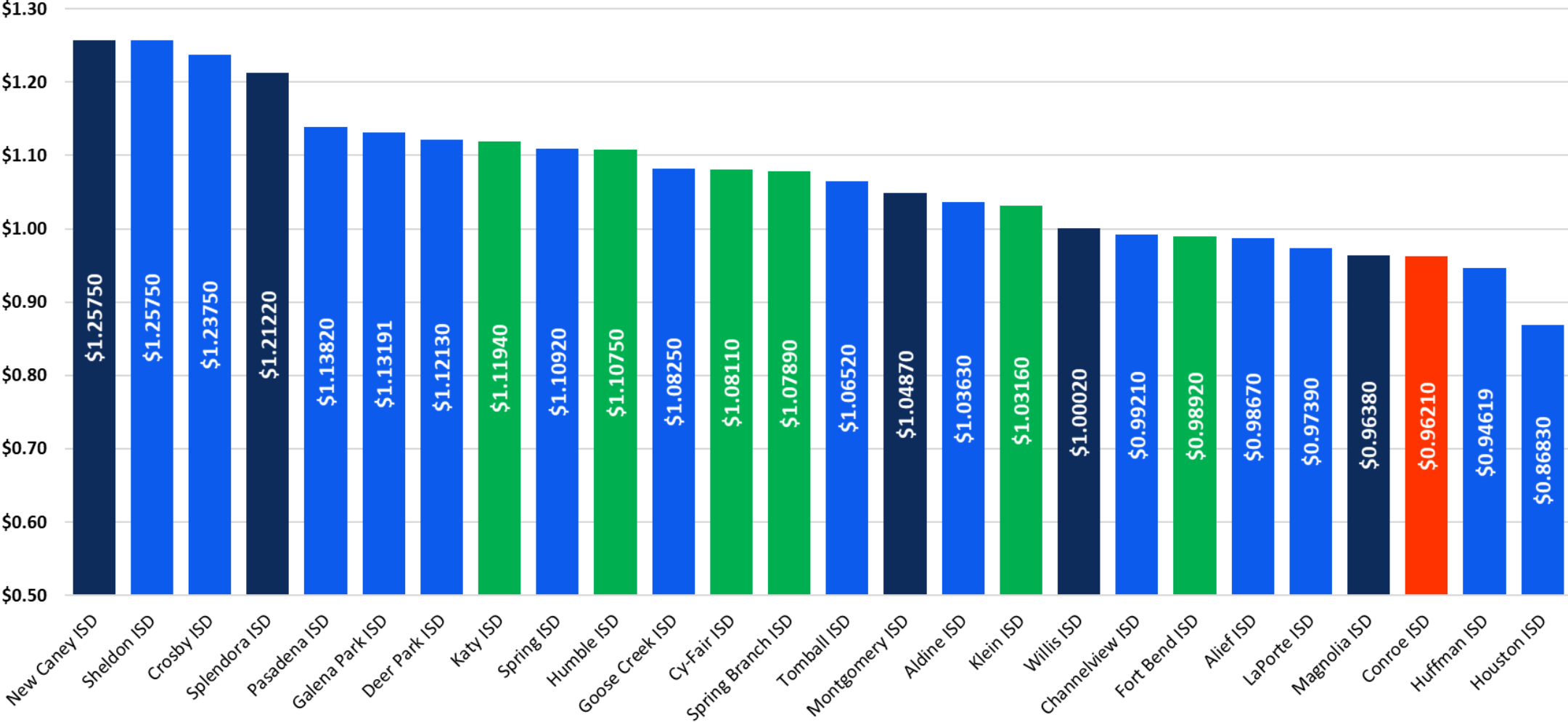
Debt Service

Mortgage on facilities

26¢

The **MAINTENANCE AND OPERATIONS** portion of the tax rate is used to fund the day-to-day operations of the district. The **DEBT SERVICE** or I&S portion of the tax rate provides funding for principal and interest payments on debt the district issues to finance the building of new facilities and other capital expenditures.

2023-2024 HOUSTON AREA TAX RATE COMPARISON



2021-22 OPERATING EXPENDITURES BY FUNCTION COMPARISON



	Conroe ISD	State	Clear Creek ISD	Cy-Fair ISD	Fort Bend ISD	Humble ISD	Katy ISD	Klein ISD	Spring Branch ISD
Instruction	59.56%	55.85%	61.11%	63.32%	56.67%	58.65%	62.78%	59.91%	58.07%
Instructional Resources & Media Services	0.92%	1.00%	1.05%	0.64%	1.04%	0.75%	1.05%	0.86%	0.99%
Curriculum/Staff Development	2.72%	2.43%	3.01%	2.07%	2.65%	4.30%	1.94%	2.67%	3.04%
Instructional Leadership	1.04%	1.73%	0.97%	1.11%	2.41%	1.17%	0.83%	0.92%	1.97%
School Leadership	5.77%	5.76%	5.36%	4.48%	6.07%	5.50%	5.23%	6.09%	5.37%
Guidance and Counseling Services	4.50%	3.92%	4.18%	4.01%	4.86%	5.37%	5.05%	5.42%	5.40%
Social Work Services	0.27%	0.36%	0.23%	0.10%	0.36%	0.04%	0.12%	0.10%	0.04%
Health Services	1.21%	1.17%	0.98%	1.13%	1.57%	1.26%	1.01%	1.17%	1.08%
Transportation	4.54%	2.95%	3.16%	3.70%	2.89%	2.41%	2.44%	2.92%	2.37%
Food Service	3.86%	5.00%	3.80%	5.12%	3.75%	4.21%	3.96%	5.08%	4.28%
Extracurricular	1.97%	2.97%	3.75%	1.86%	2.70%	2.55%	2.85%	2.42%	1.80%
General Administration	1.54%	3.29%	1.86%	1.58%	2.29%	2.17%	1.58%	2.10%	2.47%
Facilities Maintenance & Operations	9.55%	9.86%	7.09%	7.31%	8.79%	8.61%	8.19%	7.07%	8.56%
Security & Monitoring Services	1.27%	1.10%	1.33%	1.20%	1.24%	1.27%	1.14%	1.19%	1.47%
Data Processing Services	1.19%	2.06%	1.83%	1.61%	2.47%	1.47%	1.69%	1.83%	2.43%
Community Services	0.08%	0.51%	0.28%	0.77%	0.23%	0.26%	0.14%	0.25%	0.65%

Section 1

2022-23 Texas Academic Performance Reports (TAPR)

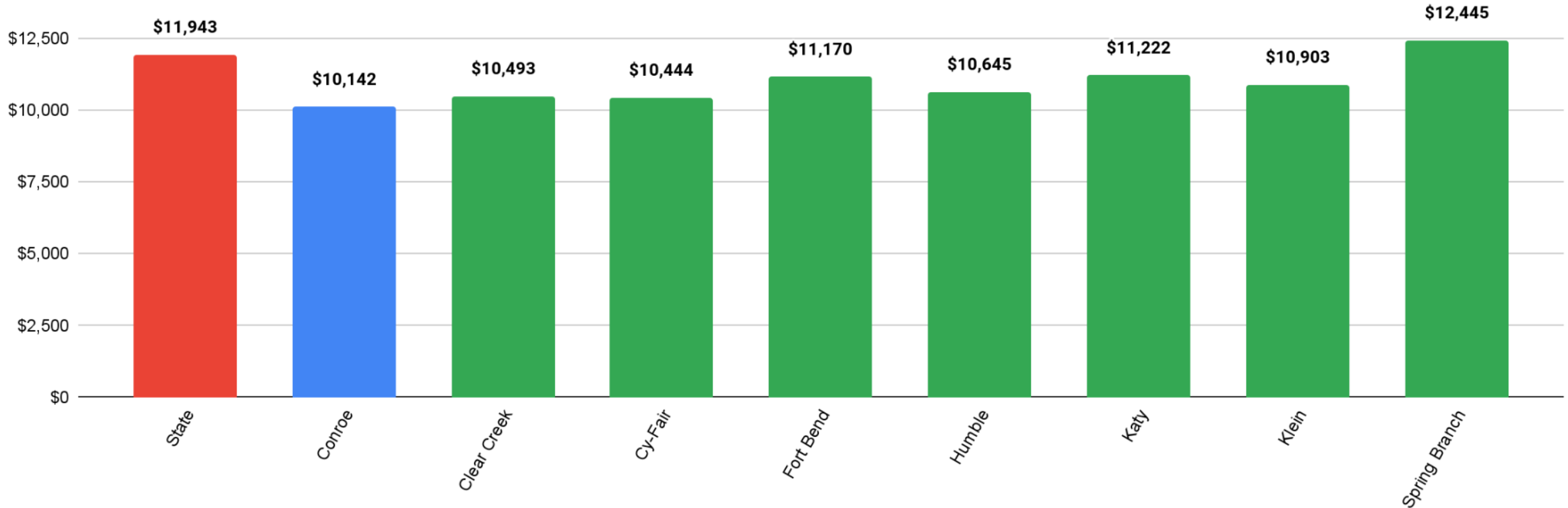
2023 Student Membership

Student Membership	Percent
African American	9.5%
Hispanic	39.3%
White	41.5%
American Indian	0.4%
Asian	5.2%
Pacific Islander	0.2%
Two or More Races	4.0%
Economically Disadvantaged	44.0%
Section 504	8.8%

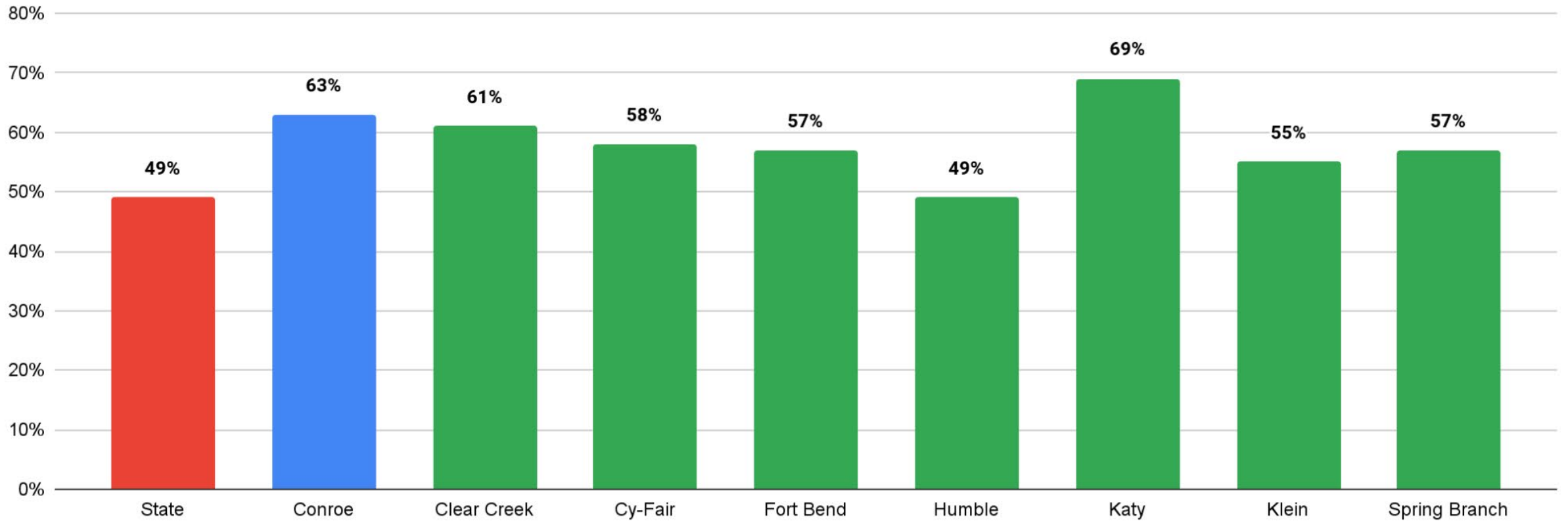
Student Membership	Percent
Emergent Bilingual/English Learners (EB/EL)	19.4%
Dyslexia	5.9%
Foster Care	0.2%
Homeless	0.6%
Immigrant	3.9%
Military Connected	0.6%
Special Education	10.0%
At-Risk	40.8%
Gifted and Talented	8.2%

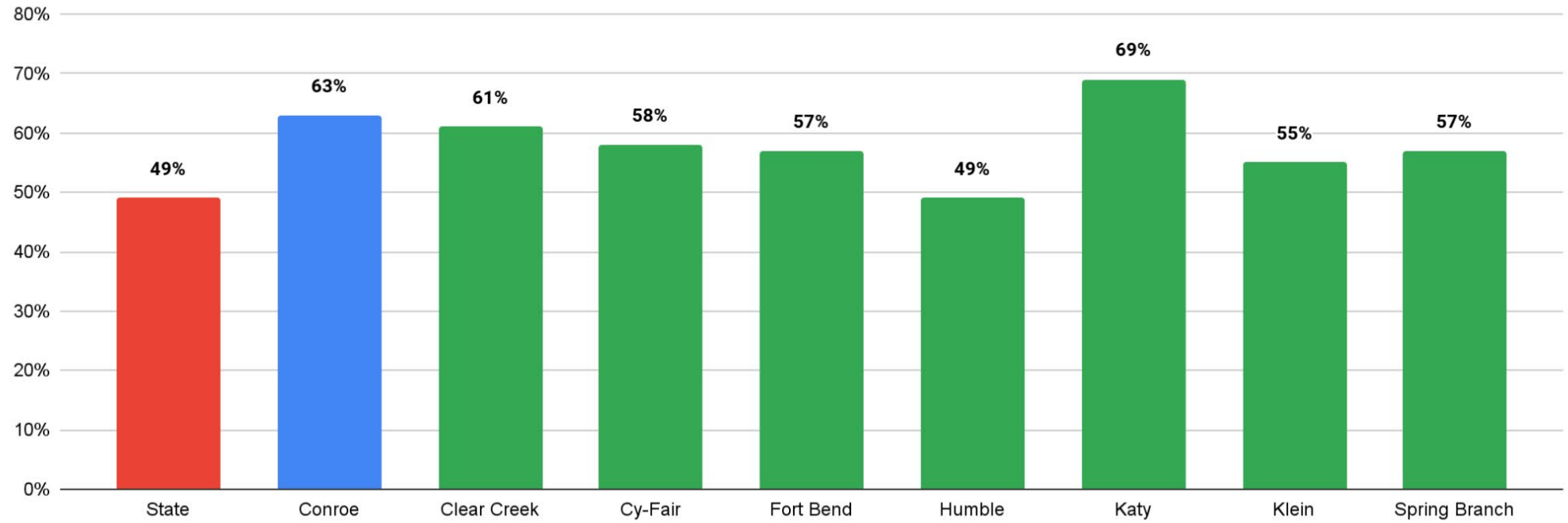
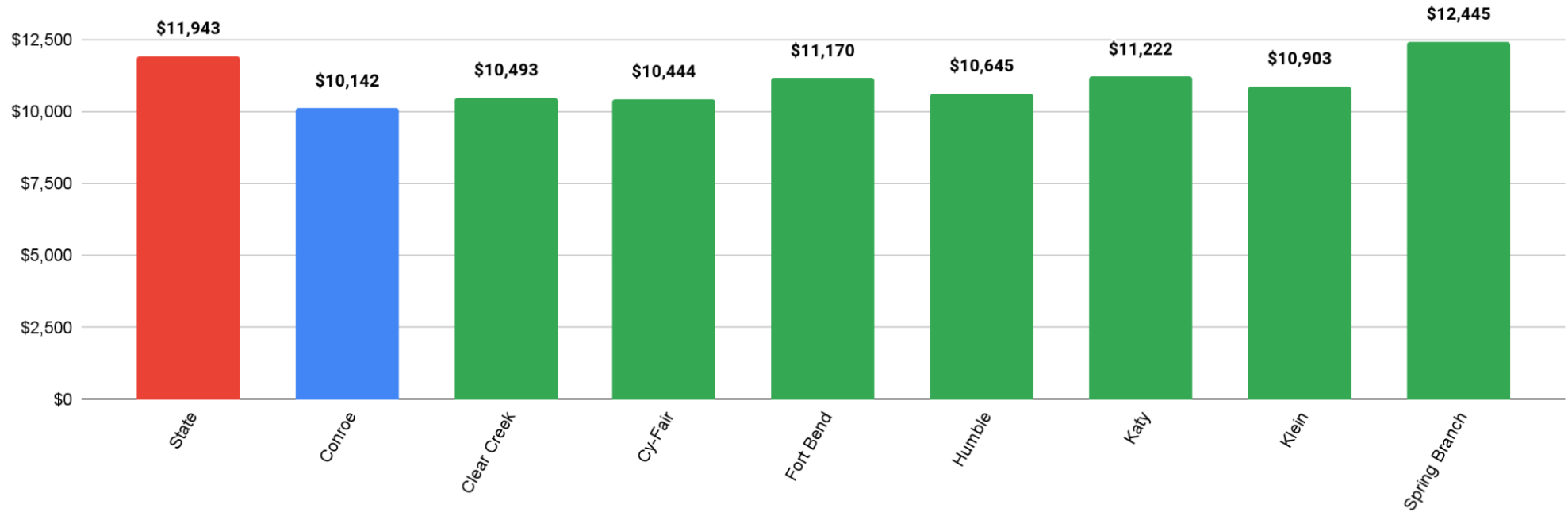


TOTAL OPERATING EXPENDITURES PER STUDENT



STAAR PERFORMANCE AT MEETS





BOND 2023 OVERVIEW



GROWING
BOND 2023

A

- 8 New Schools
- 3 Additions
- 5 Major Renovations
- 2 Master Plans
- Infrastructure
- Safety
- Land
- Transportation
- Tech. Infrastructure

\$1,820,000,000

B

- Technology Devices

\$40,000,000

2 cent impact
= \$6.67 / month

on home value of \$500K
(including \$100K
homestead exemption)

C

- 16 PE Classrooms/
Elementary Gyms
- CTE - Ag Barns

\$112,877,000

D

- Pool
*outdoor pool & Natatorium
mechanical refurbishment*

\$22,900,000

RESULTS



GROWING

On Tuesday, November 7th, the Conroe ISD community voted to approve props A, B, and C in Bond 2023.

A Prop A \$1.82 B - PASSED
61.08% – FOR
38.92% – AGAINST

B Prop B \$40 M - PASSED
58.34% – FOR
41.66% – AGAINST

C Prop C \$112.9 M - PASSED
58.75% – FOR
41.25% – AGAINST

D Prop D \$22.9 M - FAILED
49.24% – FOR
50.76% – AGAINST

- Visionary** • Possesses foresight to inspire and nurture success
- Collaborative** • Partners to promote safe and positive environments
- Accountable** • Shares ownership of student outcomes
- Knowledgeable** • Is well-informed and innovative



- Coach** • Optimizes professional capacity and growth
- Cultivator** • Fosters a shared belief of "All Means ALL"
- Relationship-BUILDER** • Supports, motivates, and connects
- Communicator** • Establishes clear and transparent expectations



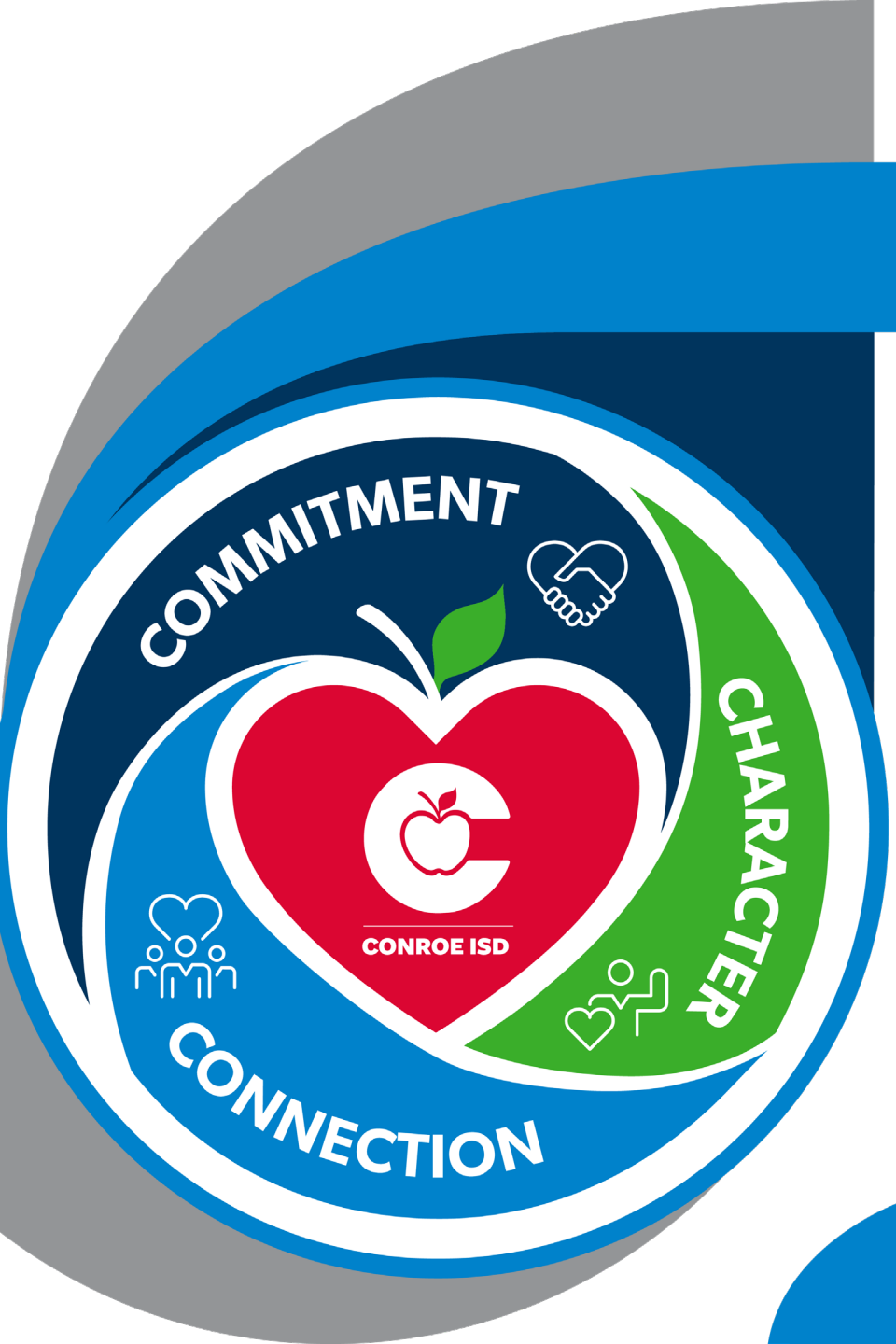
- Ethical** • Embodies strong morals, principles, and values
- Empathetic** • Understands and is sensitive to the needs of others
- Trustworthy** • Demonstrates openness, honesty, and dependability
- Discerning** • Exhibits the ability to read people and situations well



CONROE ISD LEADERSHIP MODEL



QUESTIONS?



CONROE ISD LEADS:
**COMMUNITY
COLLABORATIVE**