



Career & Technical Education Needs Information

4/11/2023

CTE Overview

Conroe ISD's Career & Technical Education Program (CTE), in partnership with the community and industry stakeholders, prepares ALL students for high-wage, high-skill, and in-demand occupations by providing real-world and rigorous programs of study.

Conroe ISD offers 13 career clusters, 29 programs of study and over 151 career course offerings. Currently, there are approximately 23,000 secondary students are currently participating in or have participated in at least one CTE course.



conroeisd.net/departments/ci/cte

CTE: Programs of Study



Agriculture Food and Natural Resources

- Animal Science
- Applied Agricultural Engineering
- Environmental and Natural Resources
- Food Science and Technology
- Plant Science

Architecture and Construction

- Architectural Design
- Carpentry

Arts, Audio Video Technology, and Communication

- Design and Multimedia Arts
- Digital Communications

Business, Marketing and Finance

- Accounting and Financial Services
- Business Management
- Entrepreneurship
- Marketing and Sales

Education and Training

- Early Learning
- Teaching and Training

Health Science

- Healthcare Therapeutic

Hospitality and Tourism

- Culinary Arts
- Lodging and Resort Management
- Travel, Tourism, and Attractions

Human Services

- Family and Community Services
- Cosmetology

Information Technology

- Networking Systems

Law and Public Service

- Law Enforcement

Manufacturing

- Adv Manufacturing and Machinery Mechanics
- Welding

STEM

- Cybersecurity
- Engineering
- Programming & Software Development
- Renewable Energy

Transportation, Distribution and Logistics

- Automotive

CISD Students Livestock Show Participation

- State Fair of Texas
- Fort Worth Livestock Show and Rodeo
- San Antonio Stock Show and Rodeo
- East Texas State Fair
- Heart of Texas
- Houston Livestock Show and Rodeo
- San Angelo Stock Show and Rodeo
- Rodeo Austin
- Montgomery County Fair
- Numerous Jackpot Opportunities across the state

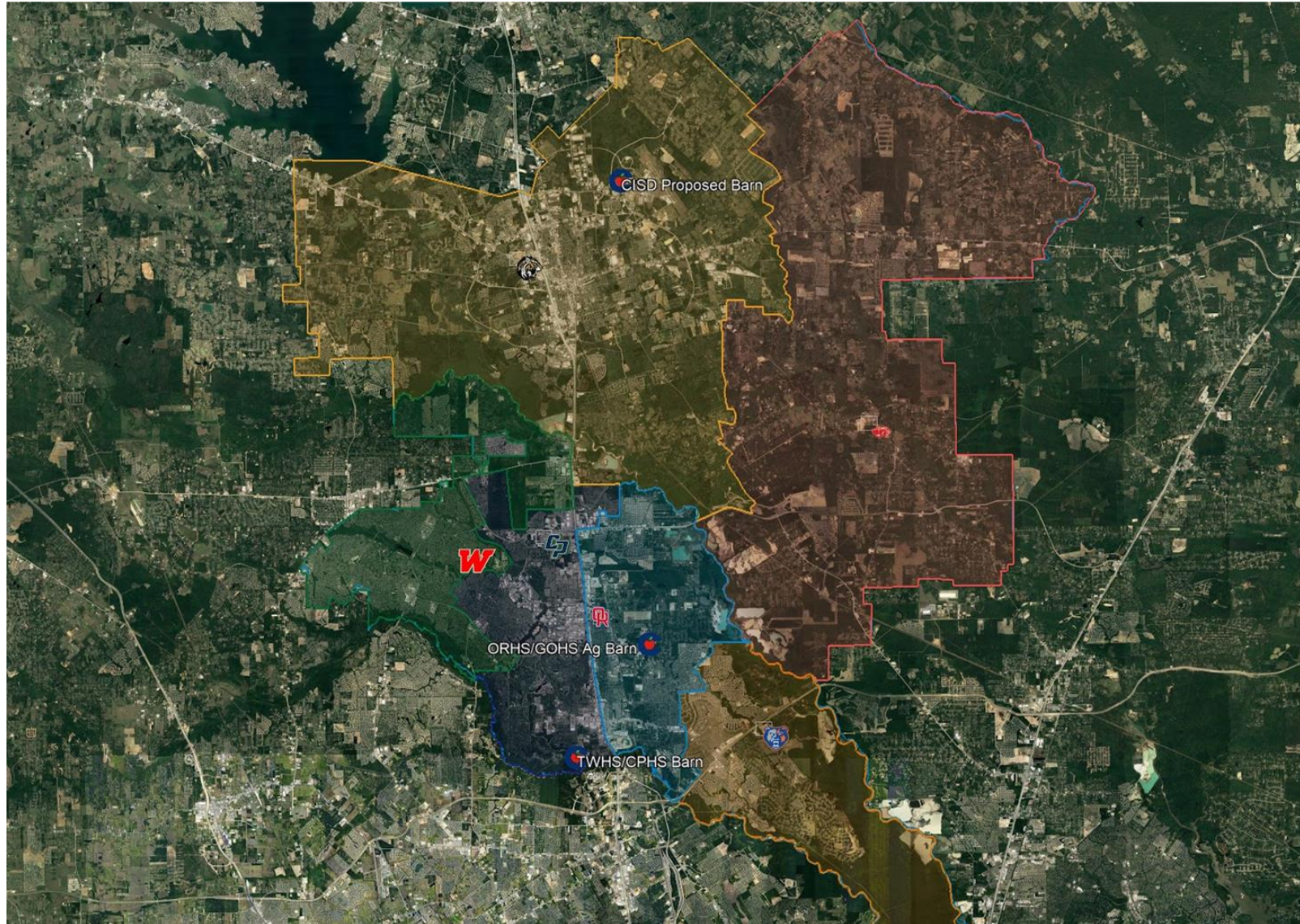


Participation Numbers

Animals	North County Totals	South County Totals
Swine	6	55
Cattle	7	32
Sheep	1	8
Goats	13	26
Rabbits	15	13
Broilers	2	3
Turkeys	2	0

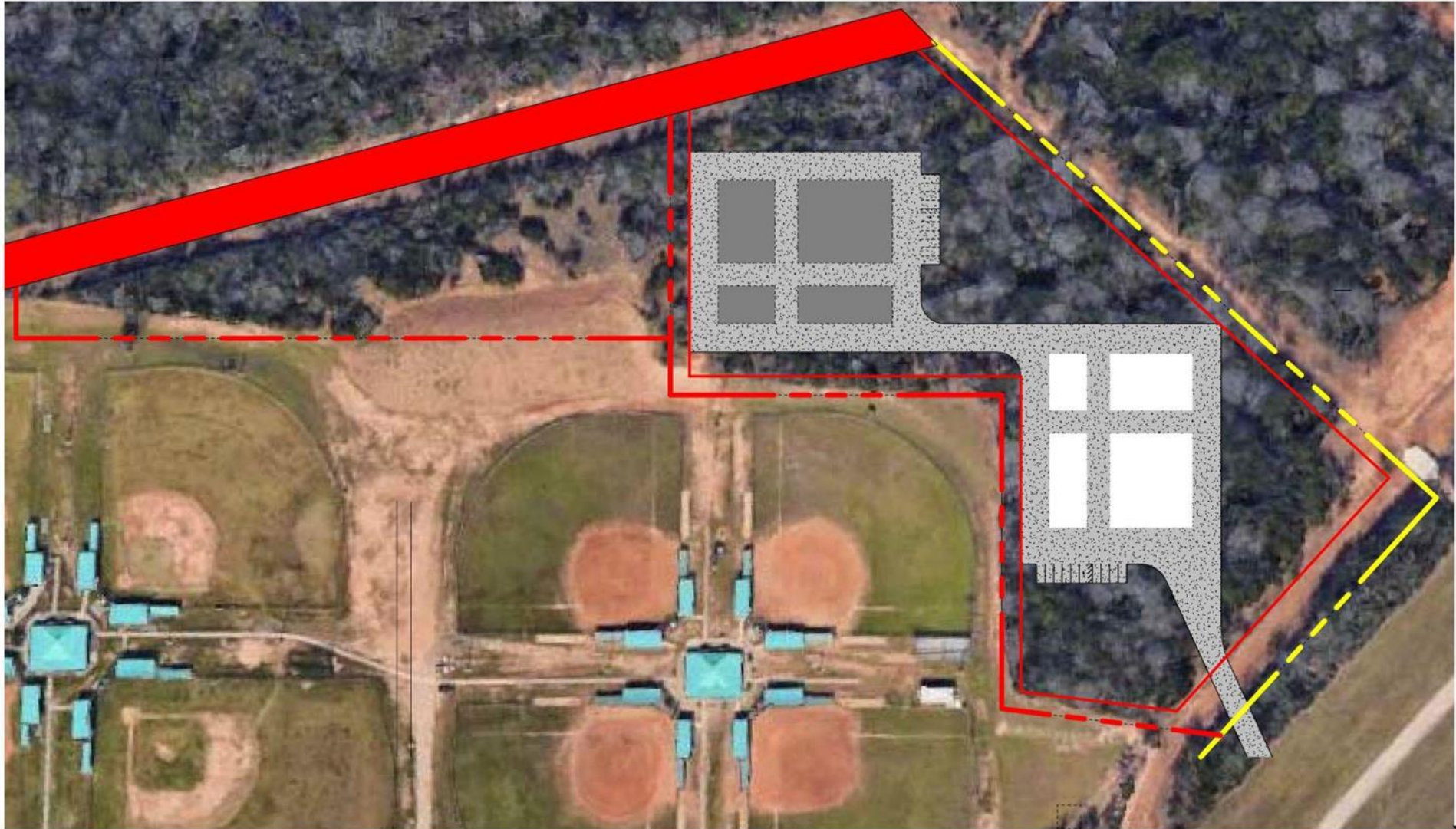


Ag Barn Locations



Proposed North County/District Livestock Facility

PRK



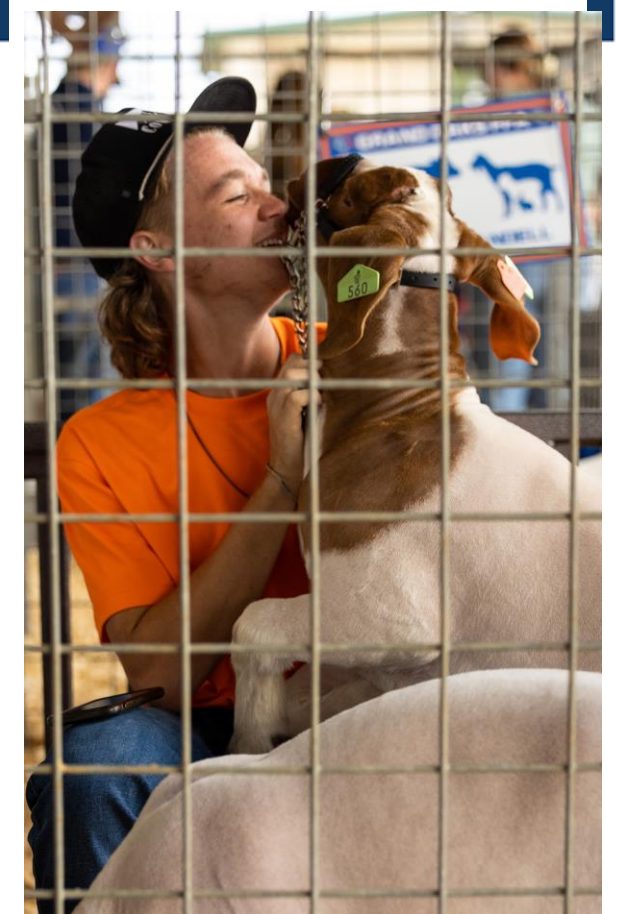
AG BARN

SITE LAYOUT - OPTION



Proposed North County/District Livestock Facility

- The goal is to provide a location for CHS, CCHS, and potentially a new high school for students to explore their supervised agricultural experiences; serve as a district facility as needed.
- Features include:
 - 30 cattle stalls
 - 75 pig stalls
 - 40 sheep/goat stalls
 - Two animal wash areas
 - Equipment storage
 - Networked for access
 - Safety and security
 - Workroom



South Country Facility Additions: Otwell

Home of ORHS and GOHS

- Expansion of New Swine Barn with Wash Rack / Feed Room
- Expansion of Cattle Barn
- Addition of Student Access Restrooms
- Waste disposal system
- Safety and Security of additional Cameras and Badging System
- Fencing around property
- Parking Lot Work



South Country Facility Additions: Budde

Home of TWHS and CPHS

- Expansion of New Lamb and Goat Facility with Feed Room
- Expansion of Cattle Barn
- Addition of Student Access Restrooms
- Safety and Security of additional Cameras and Badging System



Proposed Costs

- North County/District Livestock Facility
 - \$11 Million
- Budde Additions
 - \$3 Million
- Otwell Additions
 - \$3 Million

