



Back-to-School Schedule 2020-2021



Definitions:

Traditional In-Person Students are students whose parents have selected a face-to-face learning experience and are physically on campus. This is termed 'In-Person Instruction'.

Intermittent Remote Learning is for students who have selected In-Person Instruction but are having to participate in Remote/Online Instruction due to circumstances that have caused a school closure or delay in opening physically.

Remote/Online Students are students whose parents have selected an online learning experience, and students will not be physically on campus. This is termed 'Remote/Online Instruction'.

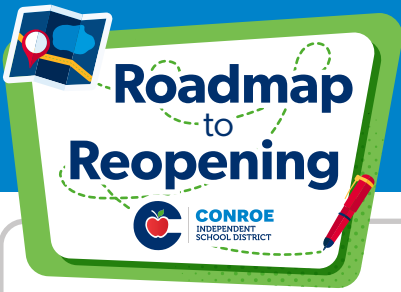
Remote/Online Instruction: Each day, students will have periods of daily instruction either live, recorded, or task oriented which is completed through their designated online learning management system, Canvas (grades 3-12) and Seesaw (grades PreK-2).

Independent Learning is self-paced, independent learning through courses in Canvas or Seesaw. This is also known as 'asynchronous learning'.

Canvas is the learning management system (LMS) Conroe ISD uses for courses and assignments for students in grades 3 -12.

Seesaw is the learning management system (LMS) Conroe ISD uses for courses and assignments for students in grades PreK-2.

Timeline	Action	Details
Beginning August 3	<ul style="list-style-type: none"> Chromebook Check-out Virtual Meet The Teacher for Elementary, Intermediate, and Junior High students 	Additional information and details will come from your child's campus. Check your child's campus website for updates.
August 10	Schedules Available	Students/Parents can log in to Student Access Center or Parent Access Center to view their schedules.
First Day of School August 12	All students begin Remote/Online Instruction.	First Day Engagement: <ul style="list-style-type: none"> Students must log in and complete/engage in an activity through their LMS to be counted as present on the first day of school. <ul style="list-style-type: none"> LMS for PreK-2: Seesaw LMS for 3-12: Canvas Students/parents may also make contact/engage by emailing or speaking with their child's teacher/campus. Beginning at 10 AM, students who have not engaged with their LMS will be contacted by the campus. Any student who did not engage or make contact with the campus/teacher on August 12 will be unenrolled per TEA's rules. Parents must contact the campus registrar to reenroll.
August 12 - September 4*	Online Learning	Daily Attendance & Participation: <ul style="list-style-type: none"> Students must engage/participate in learning in their LMS daily. If a student is not engaging, teachers will contact the student or parent. Any student not engaging in daily learning will be counted absent. If a student is unable to join a scheduled lesson, they may view the recording/lesson materials later that day. <p>* See Ramp-Up Plan for Traditional In-Person Students on next page.</p>
Through September 8	Extra-Curricular Activities	<ul style="list-style-type: none"> Occurring before or after school Parents must provide transportation. Check your child's campus website for information.
September 8	All Traditional In-Person Students return to campus full-time	Return to Traditional In-Person Instruction with the Remote/Online Instruction option available.



Ramp-Up Plan for PreK-12

In-Person Instruction Students



Transportation will be provided for eligible and registered students.



If a student's regular school day encompasses **meal times** (breakfast/lunch), the student will participate in those meals. Accounts can be managed through MySchoolBucks. Students may bring their own lunch. Reusable water bottles are encouraged for use throughout the day.



Students will **wear masks** and follow safety protocols as detailed on the Roadmap to Reopening website on the In-Person Instruction page.

Timeline

Action

Details

August 17 – September 4

Ramping Up Schools: Gradually bringing students who selected In-Person Instruction to campus.

Campuses will communicate specific information with families.

Week of August 12 –14

Online All students begin online in Remote/Online Instruction.

Week of August 17 -21

Online All students online in Remote/Online Instruction

Dyslexia (twice weekly)

On Campus **Beg. Aug. 19:** Parents/guardians of students with the most significant needs will be contacted.



Week of August 24 -28

Online All students online in Remote/Online Instruction

Dyslexia (twice weekly with on campus option; parents must provide transportation for on campus participation)

On Campus Parents/guardians of students with the most significant needs will be contacted.



*regular school hours

Beg. Aug. 26: PPCD, PreK, K and 1st Grade are invited to attend.



Week of August 31 -September 4

Online All students online in Remote/Online Instruction

Dyslexia (twice weekly with on campus option; parents must provide transportation for on campus participation)

On Campus Parents/guardians of students with the most significant needs will be contacted.



On Campus PPCD, PreK, K and 1st Grade



*regular school hours

Aug. 31 - Sept 3: Grades 2-12 by last name alphabetical group on designated day **ONLY:**
Aug. 31 ONLY...A – C | **Sept 1 ONLY...**D – J | **Sept 2 ONLY...**K – Q | **Sept 3 ONLY...**R – Z



Online **Sept. 4:** In-Person Instruction Students in Grades 2-12 and all Remote/Online Instruction students

Tuesday, September 8

Online All students enrolled in Remote/Online Instruction

On Campus All students enrolled in Traditional In-Person Instruction



September 8

Return to Traditional In-Person Instruction with the Remote/Online Instruction option available.

The District's Roadmap to Reopening website contains the most updated information. Safety protocols will be in place.