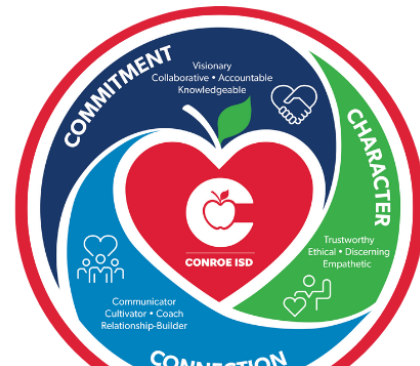


ASPIRE TO LEAD

2023-2024



Course Syllabus

September 21, 2023

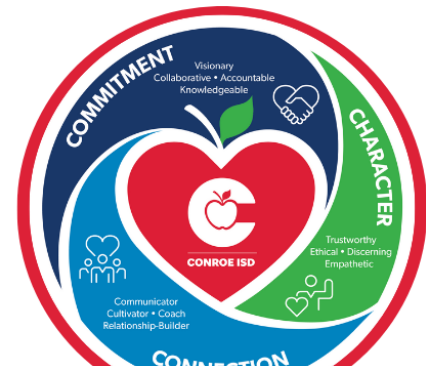
Leadership Category	Commitment
Leadership Competency	<i>Visionary, Collaborative</i>
Leadership Descriptor	Possesses foresight to inspire and nurture success & Partners to promote safe and positive environments
Effective School Framework (ESF) Essential Action(s)	1.1 Developing campus instructional leaders (principal, assistant principal, teacher leaders, and counselors) with clear roles and responsibilities
Session Topics	Program Overview, Leadership Definition, Campus Connections, Connecting the Generations, Changing Educational Paradigms
Resource(s)	<i>The Care and Feeding of Your Young Employees</i>
Presenter(s)	Dr. Hedith Saucedo-Upshaw and Malinda Stewart

October 19, 2023

Leadership Category	Connection
Leadership Competency	<i>Communicator</i>
Leadership Descriptor	Establishes clear and transparent expectations
Effective School Framework (ESF) Essential Action(s)	1.1 Developing campus instructional leaders (principal, assistant principal, teacher leaders, and counselors) with clear roles and responsibilities 3.2 Explicit behavioral expectations and management systems for students and staff
Session Topics	Better Conversations
Resource(s)	
Presenter(s)	Dr. Hedith Saucedo-Upshaw

ASPIRE TO LEAD

2023-2024



January 11, 2024

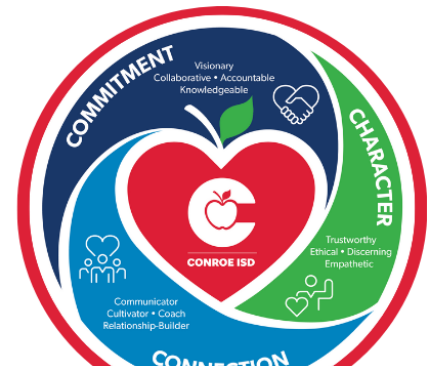
Leadership Category	Connection
Leadership Competency	<i>Communicator</i>
Leadership Descriptor	Establishes clear and transparent expectations
Effective School Framework (ESF) Essential Action(s)	1.1 Developing campus instructional leaders (principal, assistant principal, teacher leaders, and counselors) with clear roles and responsibilities 3.2 Explicit behavioral expectations and management systems for students and staff
Session Title	Cohort Panel Discussions, Increasing Teacher Collaboration
Resource(s)	
Presenter(s)	Dr. Hedith Saucedo-Upshaw and Malinda Stewart

February 15, 2024

Leadership Category	Commitment
Leadership Competency	<i>Collaborative & Knowledgeable</i>
Leadership Descriptor	Partners to promote safe and positive environments & Is well-informed and innovative
Effective School Framework (ESF) Essential Action(s)	5.2 Build teacher capacity through observation and feedback cycles.
Session Topics	Review the Labsite Model in Action (Elem. & Int.) & Learning Walks; RDA LEP Walks (JH & HS)
Resource(s)	<i>Get Better Faster</i>
Presenter(s)	Mark Smith, Kassandra Elvir, Tammy Zunker, Gilberto. Lozano, Gabby Lopez, Yvette Casas

ASPIRE TO LEAD

2023-2024



March 7, 2024

Leadership Category	Commitment
Leadership Competency	<i>Visionary, Collaborative</i>
Leadership Descriptor	Possesses foresight to inspire and nurture success & Partners to promote safe and positive environments
Effective School Framework (ESF) Essential Action(s)	1.1 Developing campus instructional leaders (principal, assistant principal, teacher leaders, and counselors) with clear roles and responsibilities
Session Topics	Review Leadership Look Fors, Charge to Lead
Resource(s)	
Presenter(s)	Dr. Hedith Saucedo-Upshaw and Malinda Stewart