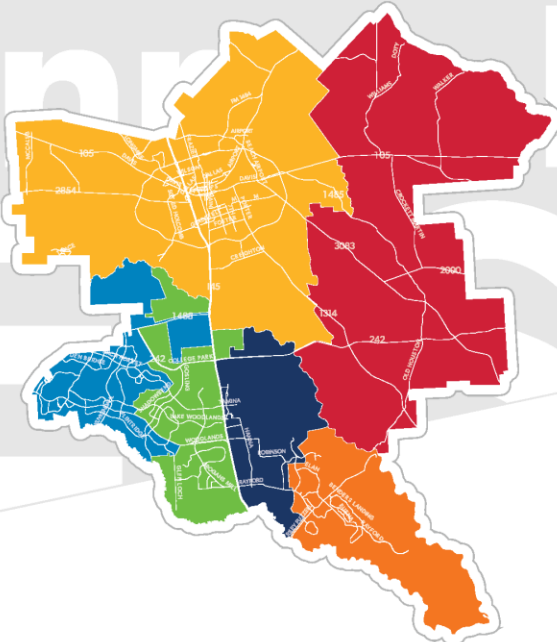
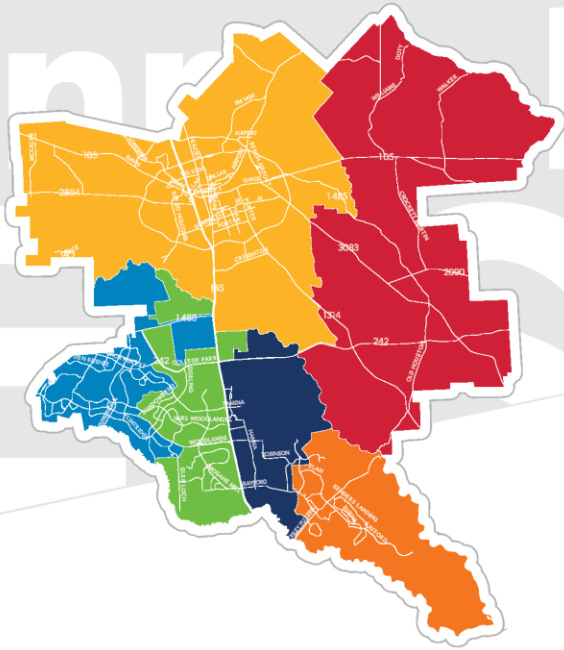


Facilities Planning Committee

Meeting #6 - December 3



Oak Ridge HS



Oak Ridge HS Tour



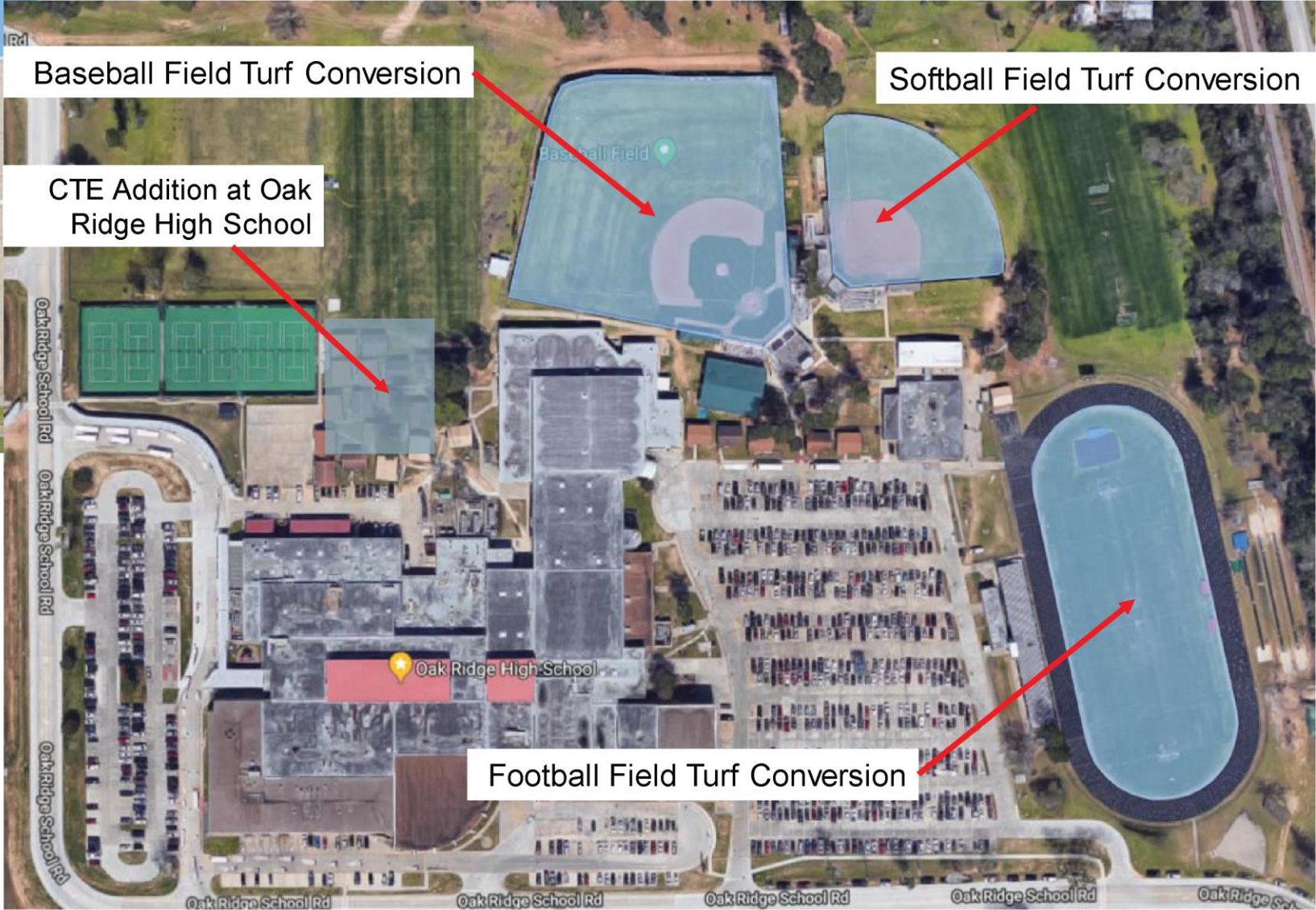
Oak Ridge High School 9th Grade Tour



Video available on FPC website.



CONROE
INDEPENDENT
SCHOOL DISTRICT



Oak Ridge HS

- Built** ● 1981
- Age** ● 37 years old
- Area** ● 363,000 gsf

\$10.5 M
CTE Conversion
(previously shared)

\$1.6 M
Football Turf
(part of turf package)

\$2.1 M
Baseball Turf
(part of turf package)

\$1.0 M
Softball Turf
(part of turf package)

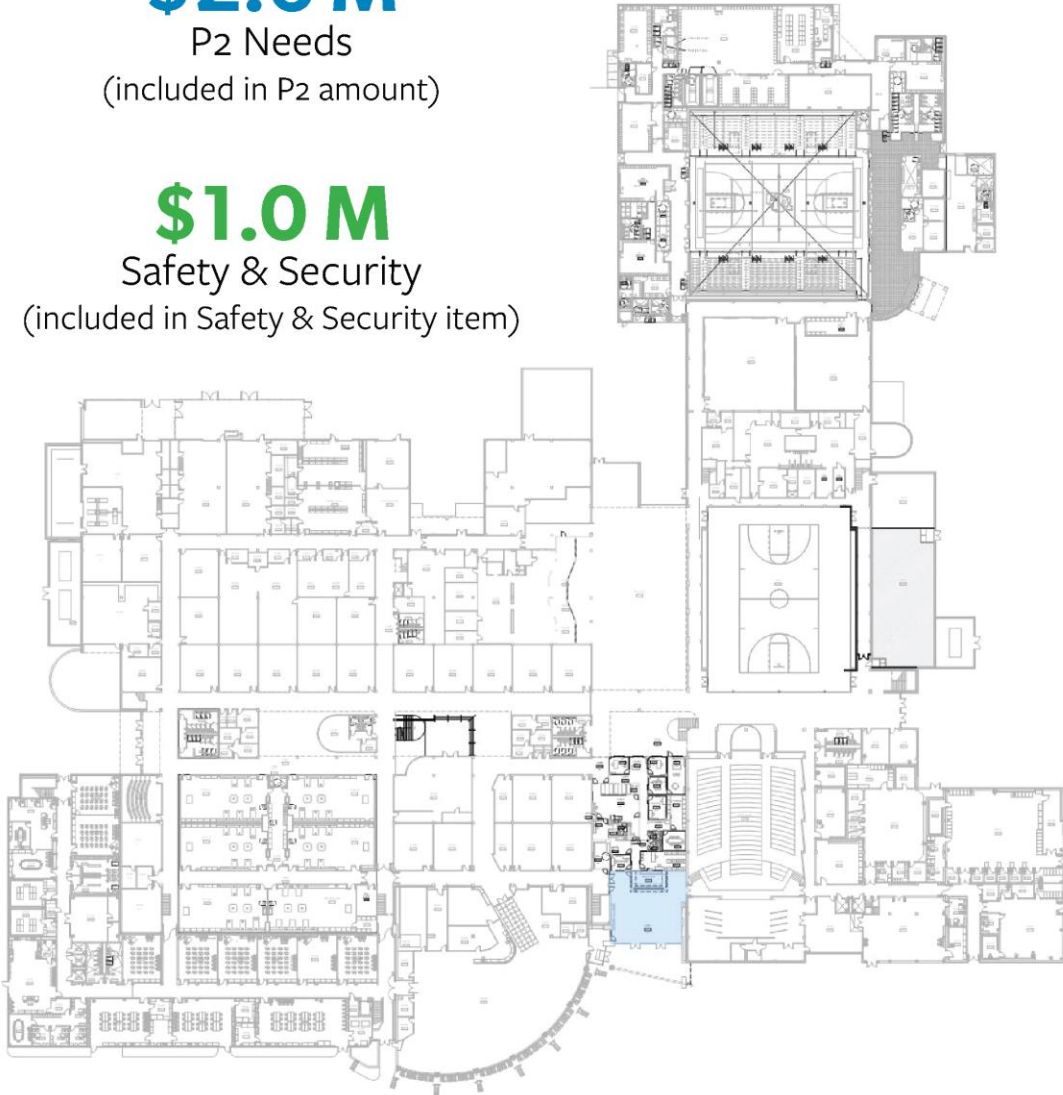
Additional ORHS Items

\$2.6 M

P2 Needs
(included in P2 amount)

\$1.0 M

Safety & Security
(included in Safety & Security item)



Oak Ridge HS Total

ORHS Overhaul ● \$47.64 M

CTE Conversion ● \$10.5 M

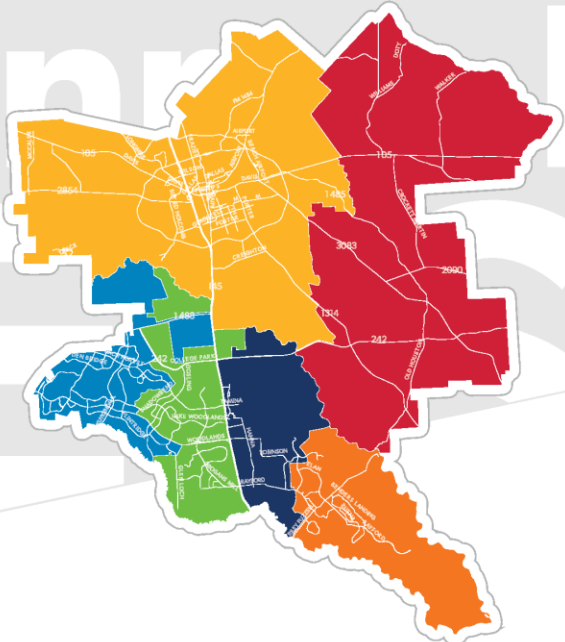
P2 Items ● \$2.6 M

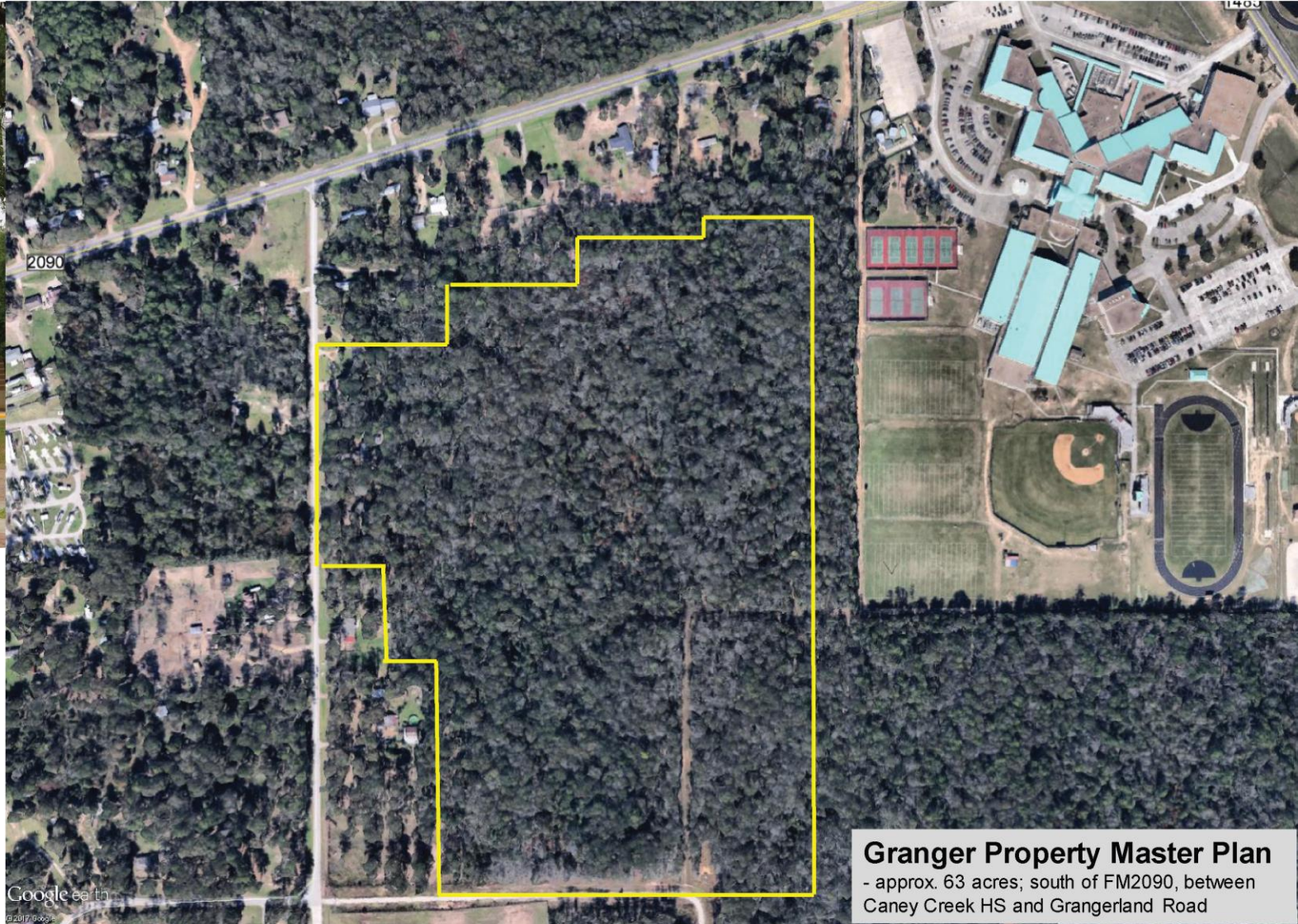
Turf Conversions ● \$4.7 M
(football, baseball, and softball)

Safety & Security ● \$1 M

\$66.44 M

Campus Updates





Caney Creek HS

- Built** ● 1995
- Age** ● 23 years old
- Area** ● 454,880 gsf

Granger Property Master Plan
 - approx. 63 acres; south of FM2090, between Caney Creek HS and Grangerland Road

\$16 M

\$11.9 M
 6A upgrades
 (includes football turf, locker room upgrades, fine arts upgrades & P2)

\$1.0 M
 Safety & Security
 (part of S&S package)

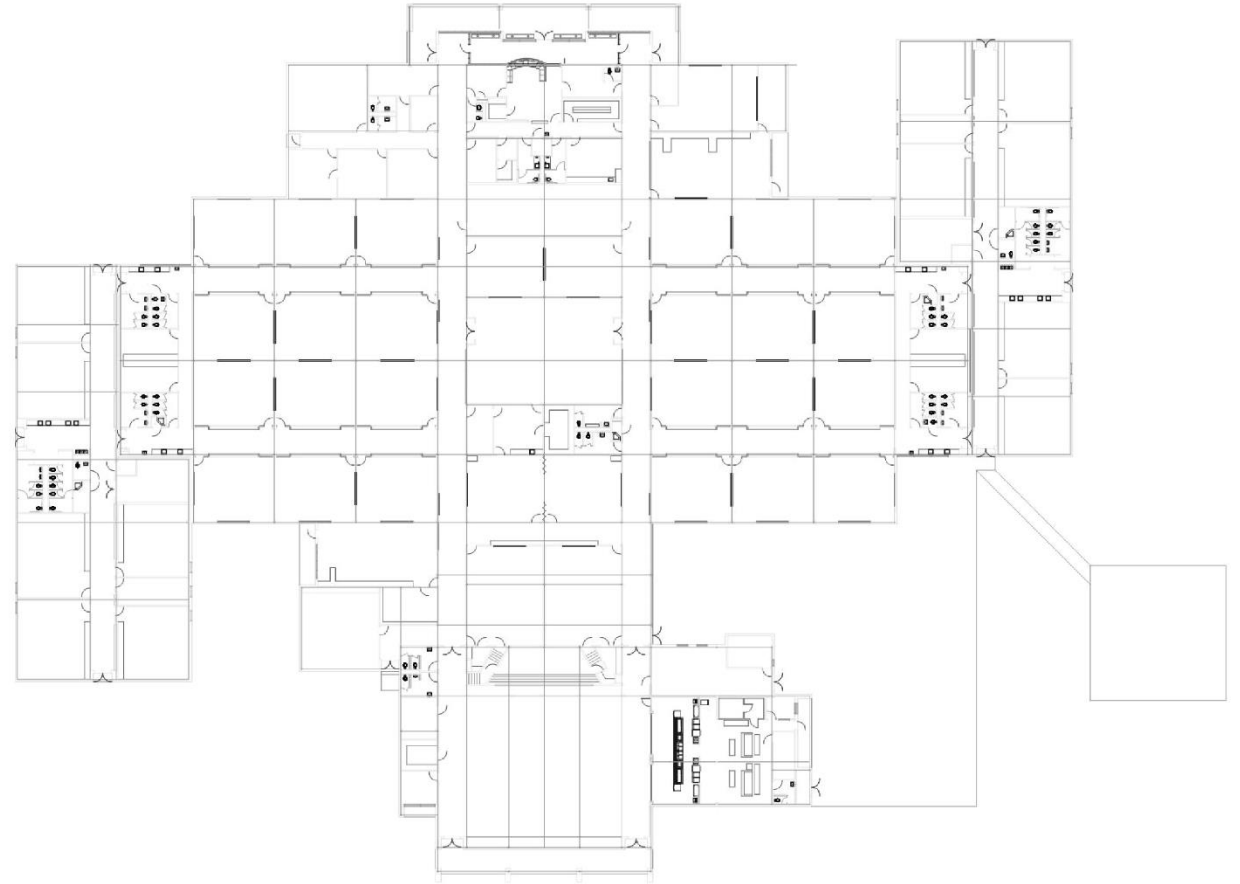
\$2.1 M
 Baseball Turf
 (part of turf package)

\$1.0 M
 Softball Turf
 (part of turf package)



Creighton Elementary

- Built** • 1980
- Age** • 38 years old
- Area** • 95,000 gsf



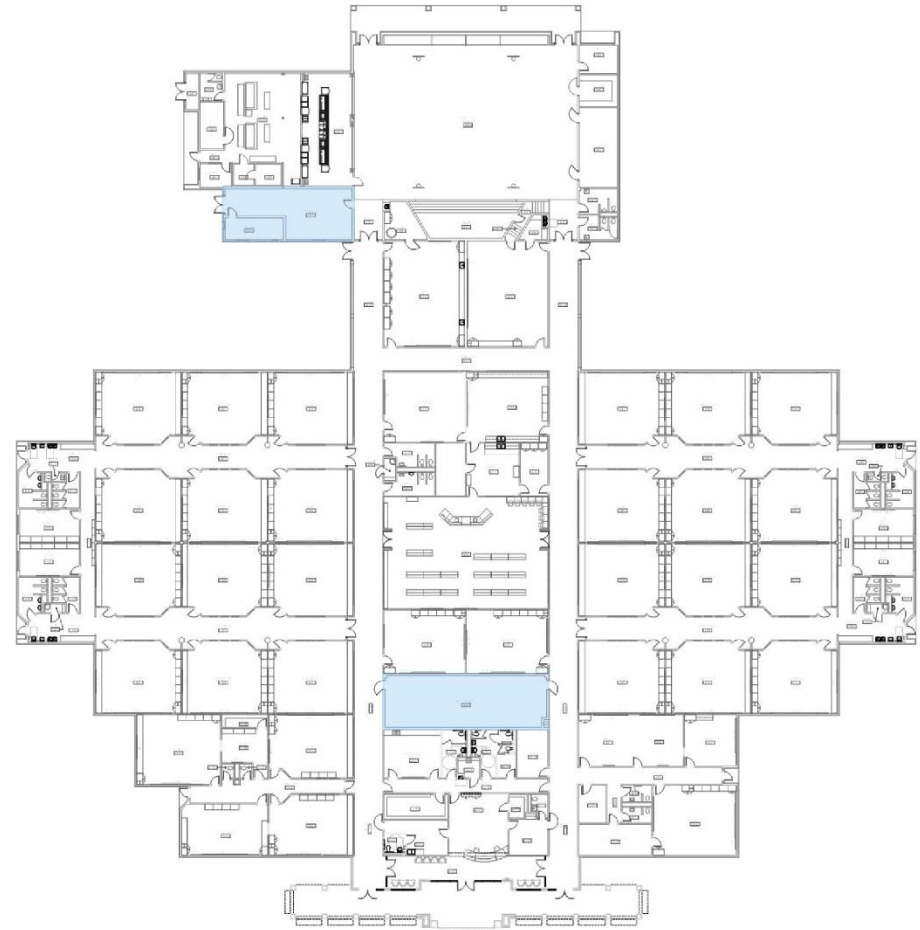
\$13.48 M

Upgrades to mechanical, electrical, and plumbing systems throughout as well as a new roof

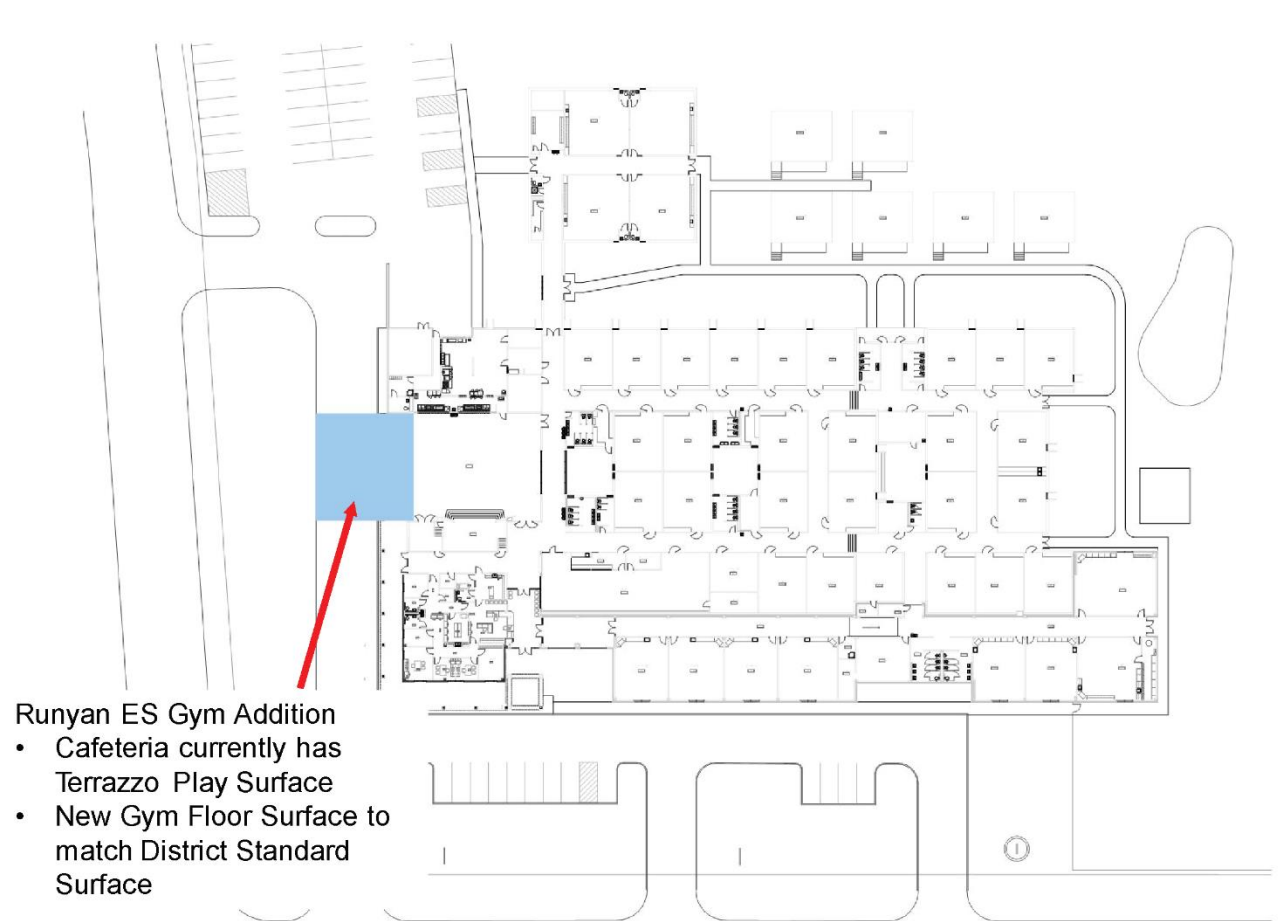


Glen Loch Elementary

- Built** ● 1980
- Age** ● 38 years old
- Area** ● 64,000 gsf



\$5.3 M
HVAC Overhaul



- Runyan ES Gym Addition
- Cafeteria currently has Terrazzo Play Surface
 - New Gym Floor Surface to match District Standard Surface

Runyan Elementary - Gym

Built • 1967
Age • 51 years old
Area • 74,110 gsf

\$3.2 M

Current Elementaries without Dedicated Gyms

Anderson Elementary – Gym/Cafeteria
 Austin Elementary – Gym/Cafeteria
 Buckalew Elementary – Gym/Cafeteria
 Bush Elementary – Gym/Cafeteria
 Creighton Elementary – Gym/Cafeteria
 David Elementary – Gym/Cafeteria
 Ford Elementary – Gym/Cafeteria
 Galatas Elementary – Gym/Cafeteria
 Giesinger Elementary – Gym/Cafeteria

Glen Loch Elementary – Gym/Cafeteria
 Hailey Elementary – Gym/Cafeteria
 Houser Elementary – Gym/Cafeteria
 Powell Elementary – Gym/Cafeteria
 Reaves Elementary – Gym/Cafeteria
 Rice Elementary – Gym/Cafeteria
 Ride Elementary – Gym/Cafeteria
 Runyan Elementary – Gym/Cafeteria



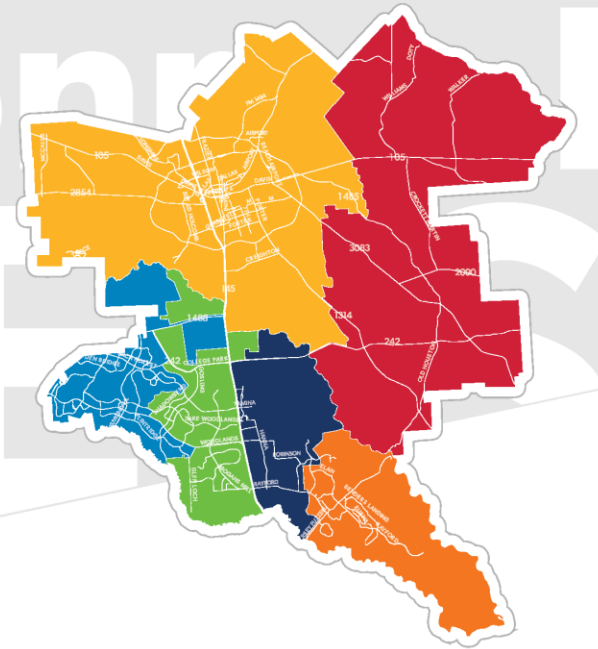
TW College Park HS - Refresh

- Built** ● 2005
- Age** ● 13 years old
- Area** ● 469,000 gsf

paint, refinish carpet,
fire alarm, auditorium HVAC,
band tower and other P2s

\$8.99 M

Bond Program

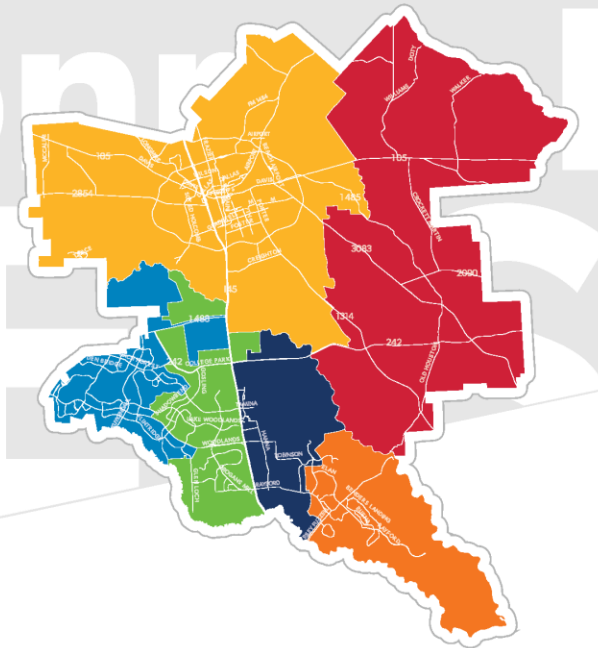


Conroe Independent School District
May 2019 Bond Program
Average Growth Assumptions - 3.0 Cent Tax Rate Increase
\$800,000,000 Bond Program

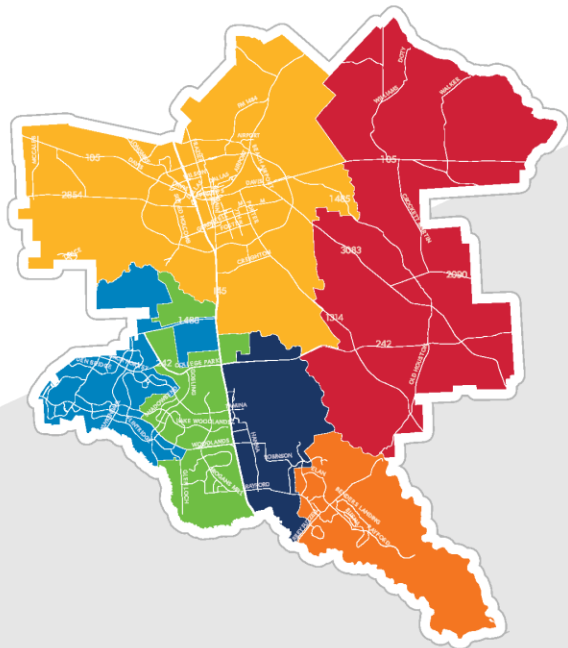
Year Ending 8/31	Beginning Debt Service Fund Balance	Interest Earnings on Fund Balance 1.50%	Net Estimated Taxable Assessed Valuation	Assessed Valuation Growth Rate (%)	Tax Rate per \$100 of Assessed Value	Tax Collections 100.00%	State Hold Harmless Payment	Issuer Contributions	Total Funds Available for Debt Service	Total Outstanding Debt Service	Plus: \$200,000,000 Series 2019 @ 4.50%	Plus: \$200,000,000 Series 2020 @ 4.75%	Plus: \$200,000,000 Series 2021 @ 4.75%	Plus: \$200,000,000 Series 2022 @ 5.00%	Total Debt Service Requirements	Less: Capitalized Interest	Plus: Deposit/ Cost to Defeas Bds	Ending Debt Service Fund Balance	Debt Service Coverage (%)
2019	\$32,558,985	\$488,385	\$35,737,543,316	5.73%	0.2400	\$85,770,104	\$1,627,625	\$10,000,000	\$130,445,099	\$101,697,800					\$101,697,800		\$7,742,167	21,005,132	18.967%
2020	21,005,132	315,077	37,703,108,198	5.50%	0.2500	94,257,770	1,742,067	8,000,000	125,320,046	100,645,781	\$10,100,000				110,745,781	\$10,100,000		24,674,265	21.087%
2021	24,674,265	370,114	39,776,779,149	5.50%	0.2600	103,419,626	1,861,573	8,000,000	138,325,578	98,010,163	9,923,738	\$9,077,778			117,011,678	9,077,778		30,391,678	23.384%
2022	30,391,678	455,875	41,765,618,107	5.00%	0.2700	112,767,169	1,981,501	8,000,000	153,596,223	100,622,906	9,944,750	10,324,931	\$9,077,778		129,970,365	9,077,778		32,703,636	23.067%
2023	32,703,636	490,555	43,853,899,012	5.00%	0.2700	118,405,527	2,031,039	8,000,000	161,630,757	101,650,219	9,918,850	10,309,200	10,344,456	\$9,555,556	141,778,281	9,555,556		29,408,032	20.547%
2024	29,408,032	441,120	45,827,324,468	4.50%	0.2700	123,733,776	2,076,737	8,000,000	163,659,665	101,648,741	9,916,488	10,316,688	10,342,419	10,901,875	143,126,209			20,533,456	14.347%
2025	20,533,456	308,002	47,889,554,069	4.50%	0.2700	129,301,796	2,123,464	8,000,000	160,266,718	101,648,063	9,916,988	10,316,919	10,338,481	10,904,375	143,124,825			17,141,893	11.977%
2026	17,141,893	257,128	49,805,136,231	4.00%	0.2700	134,473,868	2,165,933	4,000,000	158,038,822	101,650,850	9,915,238	10,315,013	10,342,406	10,904,375	143,127,881			14,910,941	10.418%
2027	14,910,941	223,664	51,797,341,681	4.00%	0.2700	139,852,823	2,209,252		157,196,679	101,650,988	9,916,125	10,315,850	10,339,075	10,901,875	143,123,913			14,072,767	9.833%
2028	14,072,767	211,091	53,351,261,931	3.00%	0.2700	144,048,407			158,332,265	101,650,088	9,919,425	10,309,431	10,343,369	10,901,750	143,124,063			15,208,203	10.626%
2029	15,208,203	228,123	54,418,287,170	2.00%	0.2700	146,929,375			162,365,701	101,649,413	9,920,025	10,310,638	10,340,169	10,903,750	143,123,994			19,241,707	13.444%
2030	19,241,707	288,626	54,962,470,041	1.00%	0.2650	145,650,546			165,180,879	101,648,781	9,917,925	10,314,113	10,339,475	10,907,625	143,127,919			22,052,960	15.408%
2031	22,052,960	330,794	54,962,470,041		0.2600	142,902,422			165,286,176	79,397,738	17,601,163	17,748,881	16,750,131	11,629,750	143,127,663			22,158,514	15.482%
2032	22,158,514	332,378	54,962,470,041		0.2600	142,902,422			165,393,314	79,400,331	17,596,525	17,751,038	16,749,419	11,629,125	143,126,438			22,266,876	15.557%
2033	22,266,876	334,003	54,962,470,041		0.2600	142,902,422			165,503,301	79,400,694	17,597,200	17,752,056	16,745,300	11,633,000	143,128,250			22,375,051	15.633%
2034	22,375,051	335,626	54,962,470,041		0.2600	142,902,422			165,613,099	79,396,888	17,602,063	17,746,106	16,751,706	11,631,125	143,127,888			22,485,212	15.710%
2035	22,485,212	337,278	54,962,470,041		0.2500	137,406,175			160,228,665	77,192,675	17,805,488	18,249,888	17,758,106	12,120,750	143,126,906			17,101,759	15.135%
2036	17,101,759	256,526	54,962,470,041		0.2050	112,673,064			130,031,349	112,673,064	39,695,550	18,299,988	17,753,613	17,249,831	112,997,856			17,033,493	15.074%
2037	17,033,493	255,502	54,962,470,041		0.2050	112,673,064			129,962,059	39,696,550	18,303,375	17,748,444	17,249,681	20,001,625	112,999,675			16,962,384	15.011%
2038	16,962,384	254,436	54,962,470,041		0.2050	112,673,064			129,889,883	39,698,275	18,300,438	17,746,675	17,249,713	20,004,625	112,999,725			16,890,158	14.947%
2039	16,890,158	253,352	54,962,470,041		0.2025	111,299,002			128,442,512	39,696,850	18,300,050	17,751,763	17,248,738	20,001,500	112,998,900			15,443,612	14.434%
2040	15,443,612	231,654	54,962,470,041		0.1960	107,726,441			123,401,708	33,698,206	18,300,863	17,747,400	17,250,450	20,000,750	106,997,669			16,404,039	15.332%
2041	16,404,039	246,061	54,962,470,041		0.1925	105,802,755			122,452,854	33,697,013	18,301,525	17,747,281	17,253,425	19,995,750	106,994,994			15,457,861	15.458%
2042	15,457,861	231,868	54,962,470,041		0.1780	97,833,197			113,522,925	26,096,225	18,901,850	17,749,744	17,251,356	19,999,625	99,998,800			13,524,125	15.196%
2043	13,524,125	202,862	54,962,470,041		0.1575	86,565,890			100,292,877	14,849,869	19,149,075	17,748,244	17,247,938	20,000,375	88,995,500			11,297,377	15.267%
2044	11,297,377	169,461	54,962,470,041		0.1290	70,901,586			82,368,424		18,998,050	17,751,119	17,246,625	20,001,125	73,996,919			8,371,506	15.222%
2045	8,371,506	125,573	54,962,470,041		0.0950	52,214,347			60,711,425			17,746,706	17,250,638	19,999,875	54,997,219			5,714,206	15.444%
2046	5,714,206	85,713	54,962,470,041		0.0625	34,351,544			40,151,463				16,999,369	19,999,500	36,998,869			3,152,594	15.765%
2047	3,152,594	47,289	54,962,470,041		0.0320	17,587,990			20,787,873				19,997,750	19,997,750	19,997,750			790,123	
Totals		\$8,108,136					\$17,819,191	\$62,000,000		\$1,876,090,653	\$364,367,200	\$368,649,515	\$366,060,053	\$384,526,306	\$3,359,693,727	\$37,811,111	\$7,742,167		

Average Tax Rate: \$0.2181
Tax Rate Increase: \$0.0300

Evaluation of Needs



Facilities Planning Committee



Meeting #7

December 12, 2018

4:30-6:30 PM

Conroe ISD Board Room