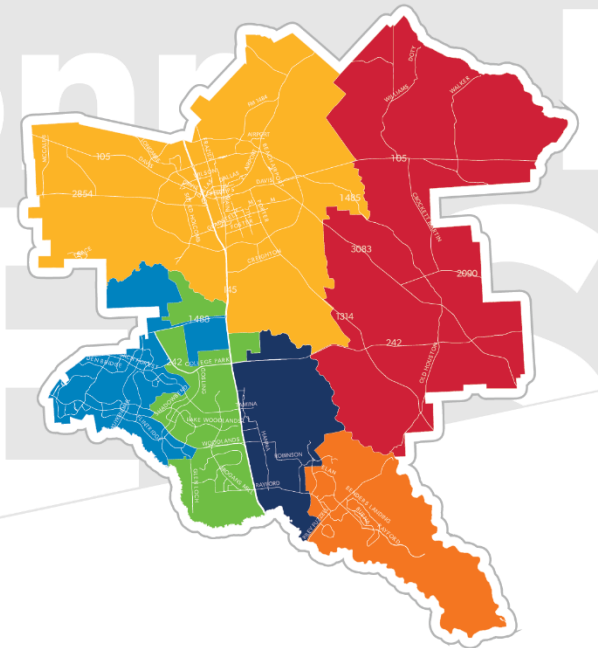
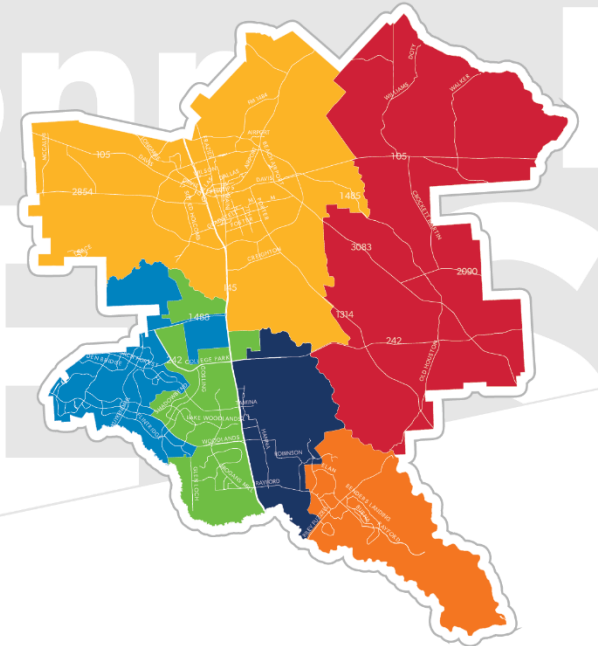


Facilities Planning Committee

Meeting #2 - October 10



District Safety



Safety Planning

Threat Assessments

What are the things we are worried about and how do we mitigate, prevent, and respond?

- active shooters
- chemical leaks
- fires
- medical emergencies
- external threats
- weather events,
- accidents, etc.

Additional Considerations

In addition to looking at facility design and layouts, the District also invests in training, counseling support, health services, and police staff to mention a few areas.



CONROE
INDEPENDENT
SCHOOL DISTRICT

Conroe ISD School Emergency Guide

School Emergency Protocols

A crisis can take the form of several different situations such as a weather emergency, chemical spill, gas leak or a possible intruder. The actions taken in the initial minutes of an emergency are critical. Prompt communication ensures that students, faculty, and staff can take needed protective actions based on the understood risk.

Safety Terms

In the event of an emergency at your child's school, it is important to know these terms:

Lockdown - This is used when a violent person or threat is in or on the grounds of the campus. There are no class changes and everyone is to remain in their room. All doors, windows, and classrooms are locked until the "All Clear" signal is given.

Lockout - This is used when a violent threat is off campus, such as someone fleeing from the police, gunfire, or explosion. People are allowed to move within the building and the exterior of the campus is secured and doors are monitored.

Evacuate - This procedure is used when students and staff need to leave a campus or facility for a variety of hazards.

Shelter - This is the presence of a hazard to health and safety of people inside and outside the building. All windows and doors are locked and the HVAC system is shut down. This procedure is also used when the school is being threatened by weather. All persons in the building are sheltered away from glass and high ceilings.

Procedures for Reunification

Parents and/or guardians will be directed by school officials to their child's location and all vital information via the district website, the district's mass communication system, and news alerts. Students will be released only to the **emergency contact on file** and you must present a picture ID such as a driver's license, military ID or passport. The reunification process can be a busy and time consuming one, so please be patient.

- Do update your child's emergency contact information.
- Do become familiar with your school and district's emergency communication procedures.
- Do not rush to your child's school.
- Do not tie up the phone lines at your child's school.
- For safety reasons, do not call your child's cell phone.

How can parents help in a emergency?

We realize that it is your first instinct as a parent to rush to your child's school or pick up the phone and call. However, in an emergency, the best thing you can do is to stay aware of what is happening via the District website or news broadcasts. Remember that we are working to keep your child safe, and if there are large numbers of people or vehicles in the area, you may be hindering emergency personnel from getting to the site. Stay close to your phone and email for updates.

IN AN EMERGENCY WHEN YOU HEAR IT. DO IT.

LOCKDOWN! LOCKS, LIGHTS, OUT OF SIGHT.

STUDENTS
Move away from sight
Maintain silence
Do not open the door

TEACHERS
Lock interior doors
Turn out the lights
Move away from sight
Do not open the door
Maintain silence
Take attendance



LOCKOUT! SECURE THE PERIMETER.

STUDENTS
Return inside
Business as usual

TEACHERS
Bring everyone indoors
Lock perimeter doors
Increase situational awareness
Business as usual
Take attendance



EVACUATE! TO ANNOUNCED LOCATION.

STUDENTS
Bring your phone
Leave your stuff behind
Follow instructions

TEACHERS
Lead evacuation to location
Take attendance
Notify if missing, extra or injured students



SHELTER! HAZARD AND SAFETY STRATEGY.

STUDENTS
Hazard Safety Strategy
Tornado Evacuate to shelter area
Hazmat Seal the room
Earthquake Drop, cover and hold
Tsunami Get to high ground

TEACHERS
Lead safety strategy
Take attendance



For Emergency Information

TV Channels:

2, 11, 13, 26, 39, and 45

Radio Stations:

KSTAR 99.7 FM KILT 100 FM
KVST 103.7 FM KTRH 740 AM
KSBJ 89 FM KKBQ 92.9 FM
KIKK 95.7 FM

Online:

www.conroeisd.net

Conroe ISD @ConroeISD

Conroe Independent School District
3205 West Davis St. • Conroe, TX 77304
936-709-7752

CISD Police - 936-709-8911



CONROE
INDEPENDENT
SCHOOL DISTRICT

Active Shooter/Intruder
Missing Child
Chemical Spill
Hazardous Materials
Gas Leak
Fire/Explosion
Bomb threat
Suspicious Package
Tornadoes
Severe Weather

Power Outages
Managing Wild Animals
Medical Emergencies
Concussions
Heat-Related Illness
Accidents, suicides, deaths
Pipeline
Train Derailment
Flooding
Violent Behavior

Civil Disturbance
Drugs, Alcohol
Mental Illness
Polling Places
Pandemic
Network Outages
Theft of Data
Transportation Emergencies
Domestic/Custody Issues

Additional Threats

How has facility safety and security evolved?

2004

projects revolved around sprinklers, alarms, driveways, and adding video cameras at secondary schools

2008

focus was on creating secure entrances, upgrading alarms, and adding video cameras at all campuses, adding some driveways, etc

2015

3 phases of Bond Program totaling \$13,904,732.28; focus became secure vestibules (layered approach), controlled access, upgraded and expanded camera system, etc.

- In addition to the safety and security projects above, safety and security is incorporated into campus projects. Upgrades to Wilkerson, Hailey and Knox were included in the Knox science addition project (\$776,685.00). The cost of a new campus includes the safety and security costs. GOHS safety and security was approximately \$1,000,000. Clark Intermediate had a cost of roughly \$492,000 included in the cost of the project.
- Added police staff and emerging technologies means that we anticipate a greater portion of resources being dedicated to safety as we move forward.

What is a layered approach to campus safety?

Deter:	Make it harder to gain access
Detect:	To more quickly identify the threat
Delay:	Slow down the action to better align with the response time by law enforcement
Respond:	Have law enforcement nearby or on site and to train staff to adequately respond

80

police officers including three
detectives & three K-9 officers

16

prevention control (security)

5

full time dispatchers

75

crossing guards at 102 locations

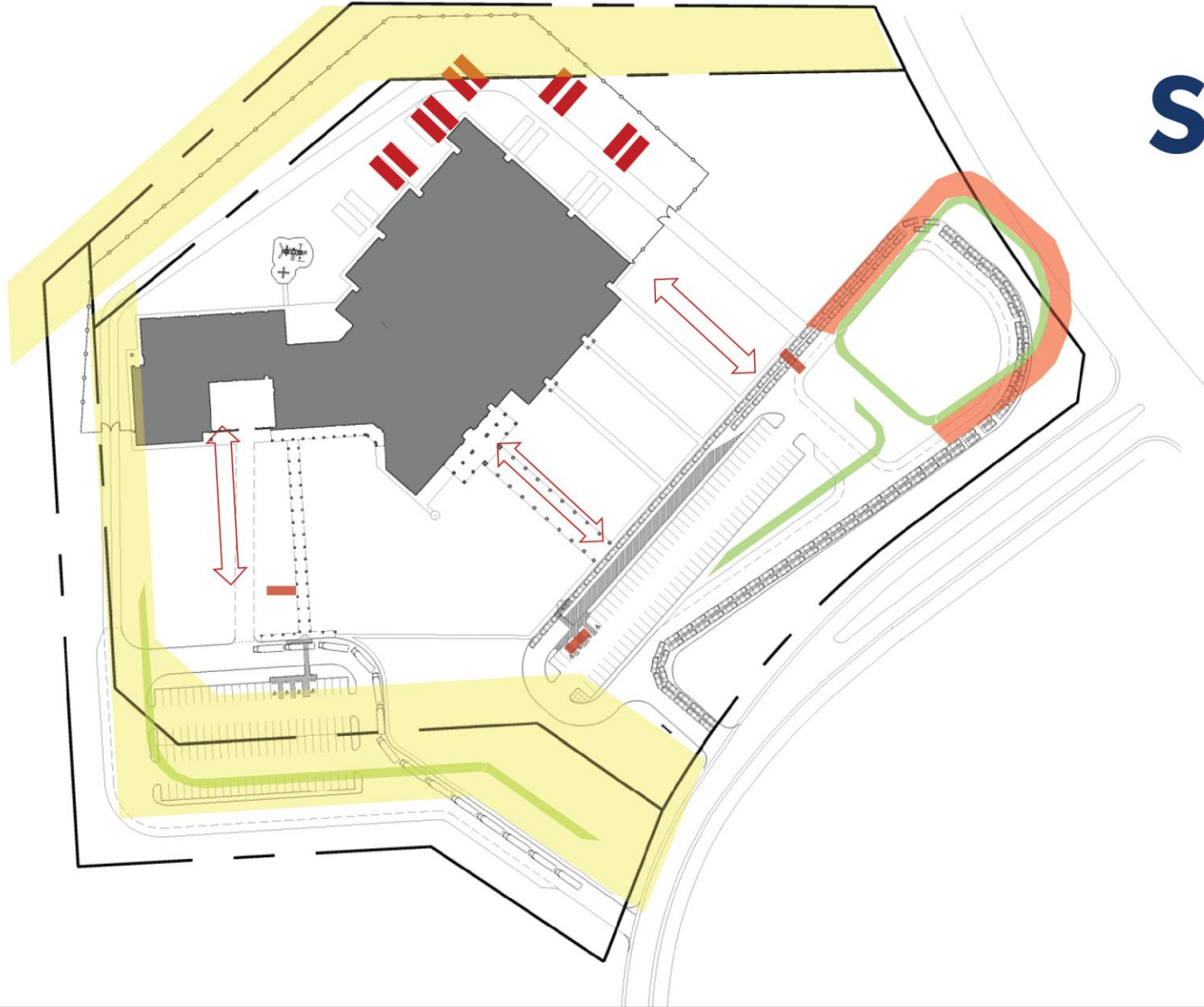


Training

School Based Law Enforcement
SWAT/Use of Force
ALERRT Active Shooter Training
Tactical Medical
Crisis Intervention & Mental Health
De-Escalation/Dispute Mediation
Ongoing w/area police, fire, & EMS
Training & presentations to community



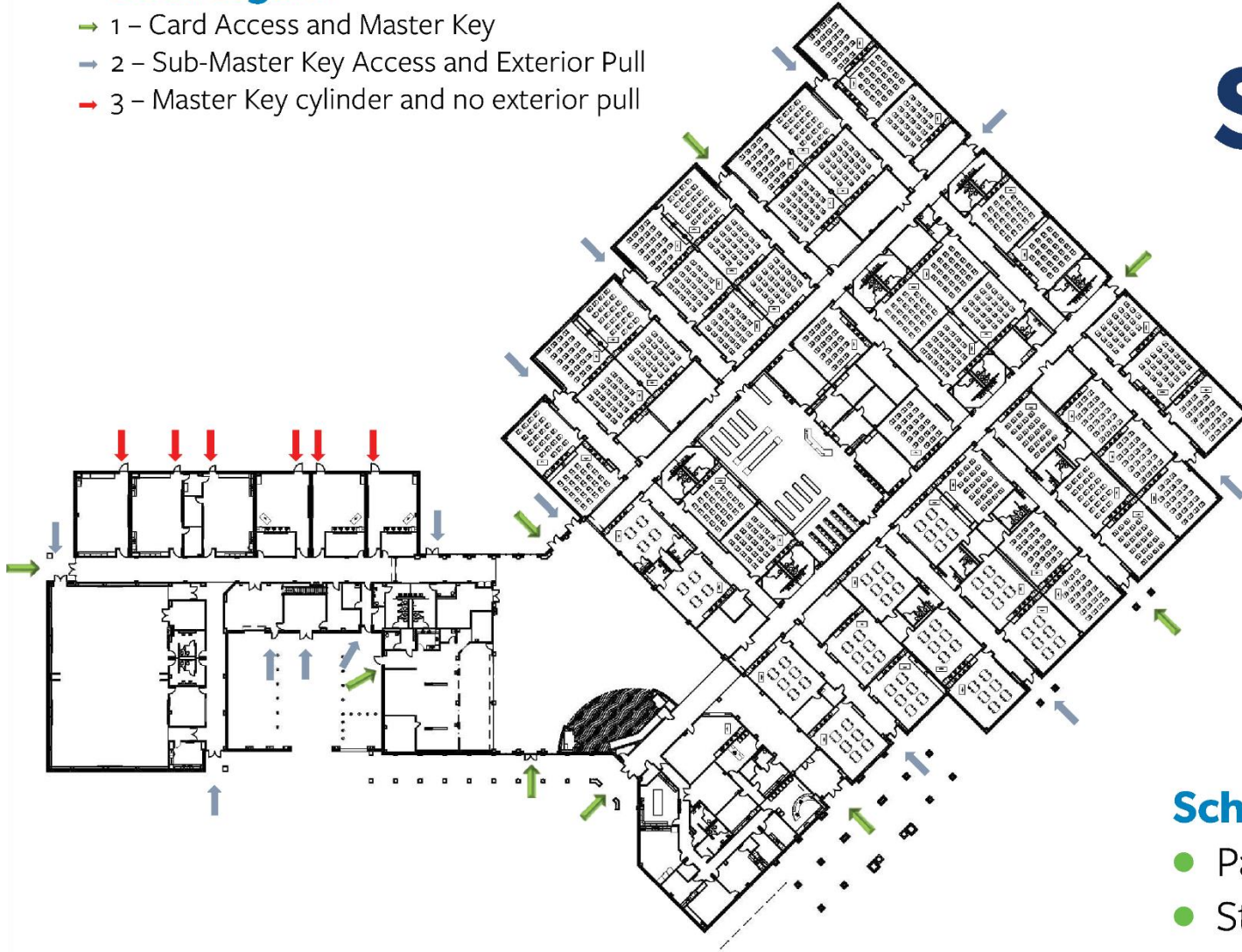
Security Planning



- increase walking distance to parking
- increase pick up and drop off queuing
- control vehicular access
- wider driveways for overflow parking
- secure future portable locations
- increased site lighting
- additional lot size: 20-30%

Door Legend

- ➔ 1 – Card Access and Master Key
- ➔ 2 – Sub-Master Key Access and Exterior Pull
- ➔ 3 – Master Key cylinder and no exterior pull



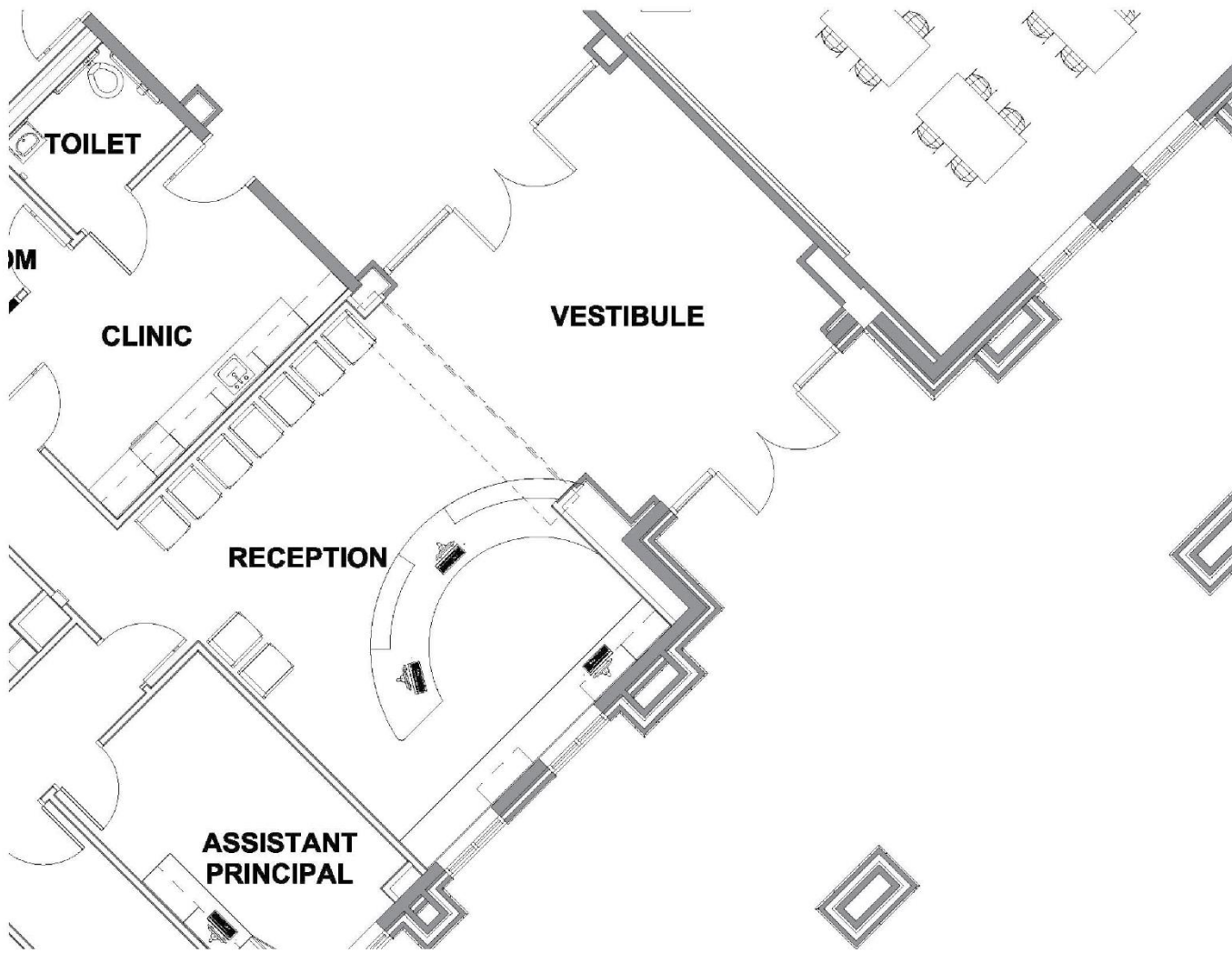
Security Planning

School Campuses:

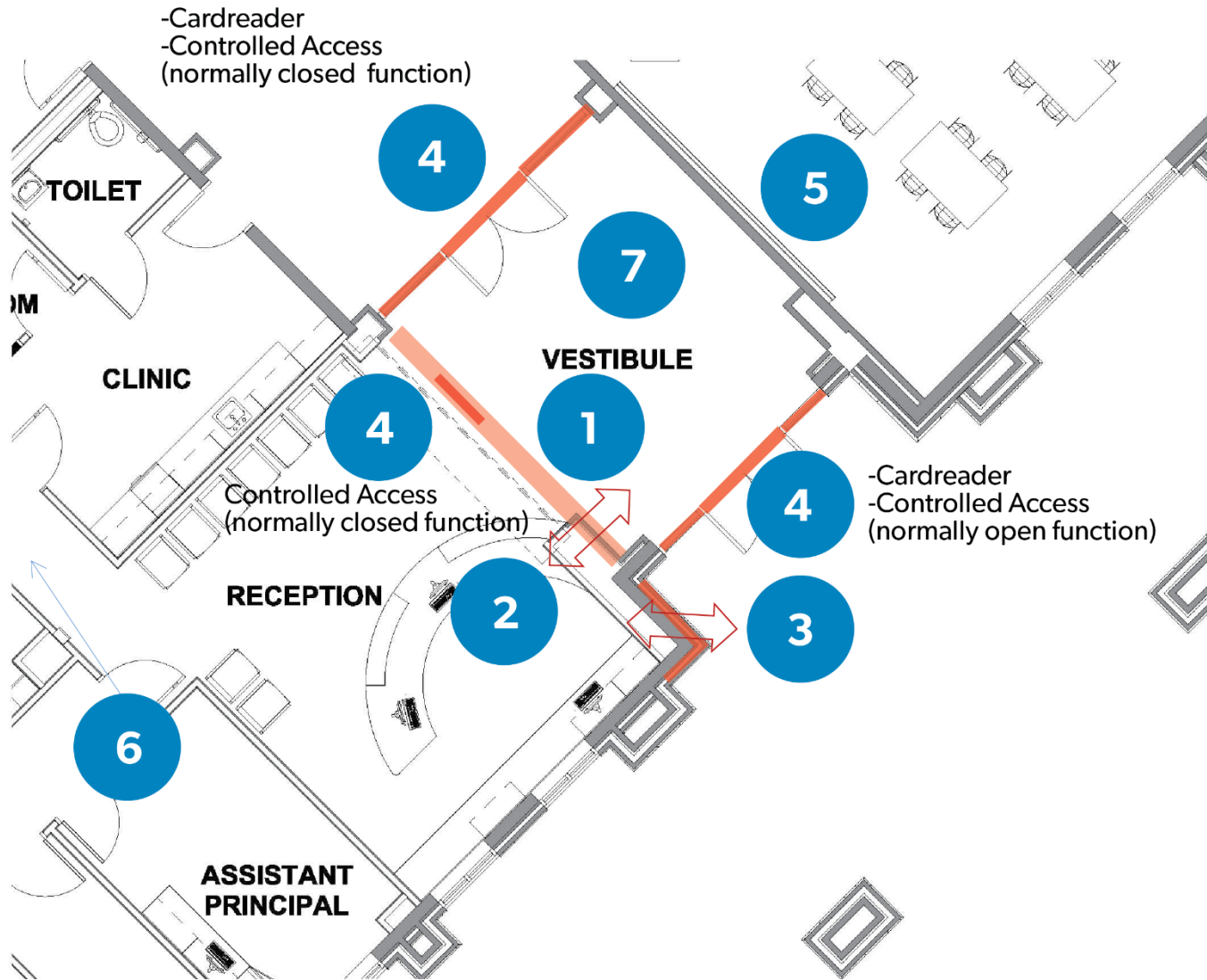
- Patterson ES (Conroe Feeder-on SH336 east)
- Stewart ES (Conroe Feeder-in Woodforest)
- Snyder ES (Grand Oaks Feeder)

Door Locations: 29

Security Planning



Security Planning



1. Enclose entry vestibule
2. Sliding window transaction counter
3. Direct view to entrance
4. Electronic unlocking
5. Wire glazing
6. Add secondary door
7. Increased security cameras

Safety Committee - Design Standards Review

- Secure vestibules at high schools
- Exterior door sensors and monitoring along with expanded keyless (key card) access
- Solutions for some elementary building with side entrances
- Door hardware and closures
- Video camera additions and monitoring
- Exterior lighting, Sidewalks
- Fence upgrades (perimeter security)
- Getting secondary schools metal detection ready.
- Protective Glass/Glazing
- Playground standards
- Work-place accident reduction
- Communications: intercoms, digital radio, repeaters, panic buttons, blue light phones
- Back-Up Power for communications/life safety (generators)

Safety Committee - Challenges

- Anticipate laws will continue to change to which we must respond
 - BDAs, Voice Fire Alarms, Portable Classroom safety code, etc.
- Sometimes competing codes/interests
- Currently utilize 184 portable classrooms
- CHS has 6 separate buildings
 - facing 7 lanes of traffic right outside the front door
- Network/Information security remains an ongoing priority
- New and emerging technologies
- Campuses have a wide range of ages and designs
- Campuses designed to enter and exit large numbers of people in short periods of time
- Air condition our bus fleet
 - average bus is 11 years old

Safety & Security Estimate



\$5 M per year
for 4 years

Transportation Estimate

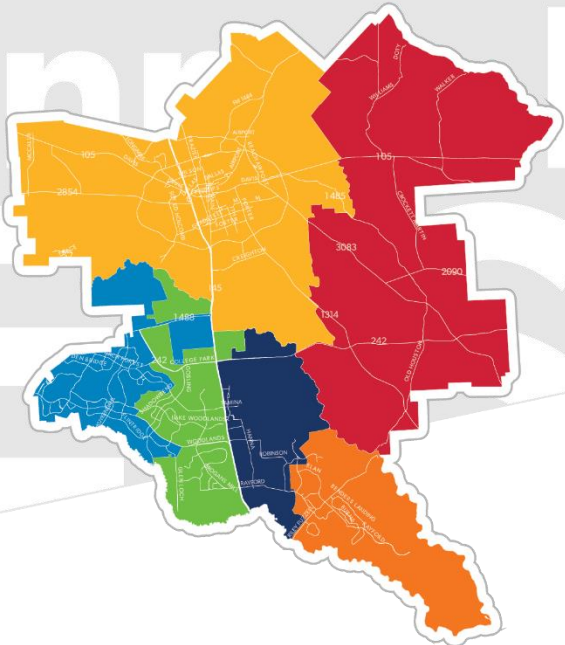


\$10 M for buses

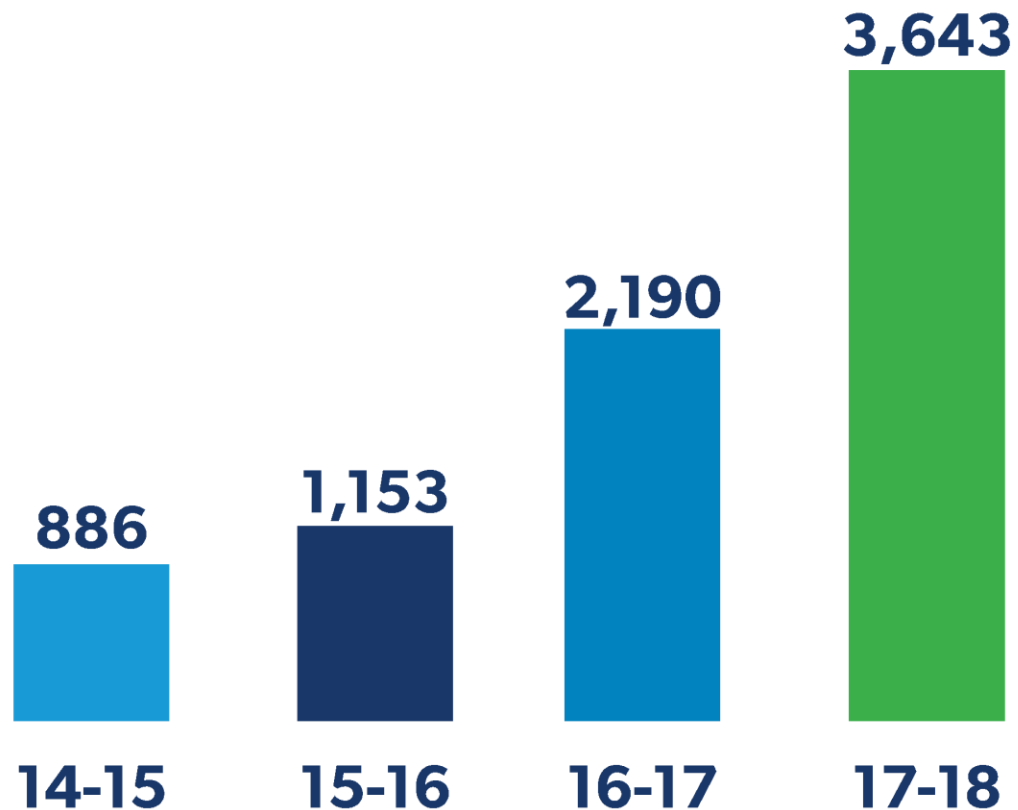


CONROE
INDEPENDENT
SCHOOL DISTRICT

Career & Technical Education



CTE Certifications



Dual Credit Opportunities

- Lone Star College:
 - Dual Credit Welding
 - Dual Credit Auto Tech
 - Dual Credit EMT
 - Dual Credit CNC Manufacturing

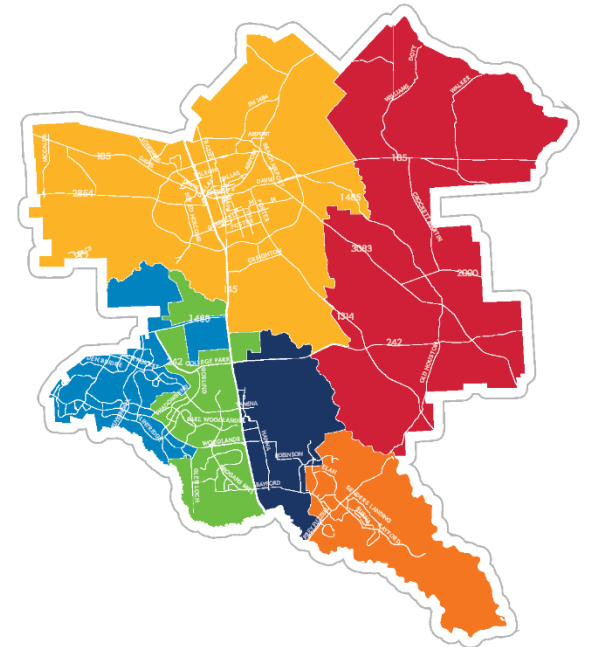


CONROE
INDEPENDENT
SCHOOL DISTRICT

Current District CTE Programs - CHS

- Area Career & Technical Education School built in 1969
- District Automotive Mechanics Lab
- District Collision and Repair Lab
- District Culinary Arts Program

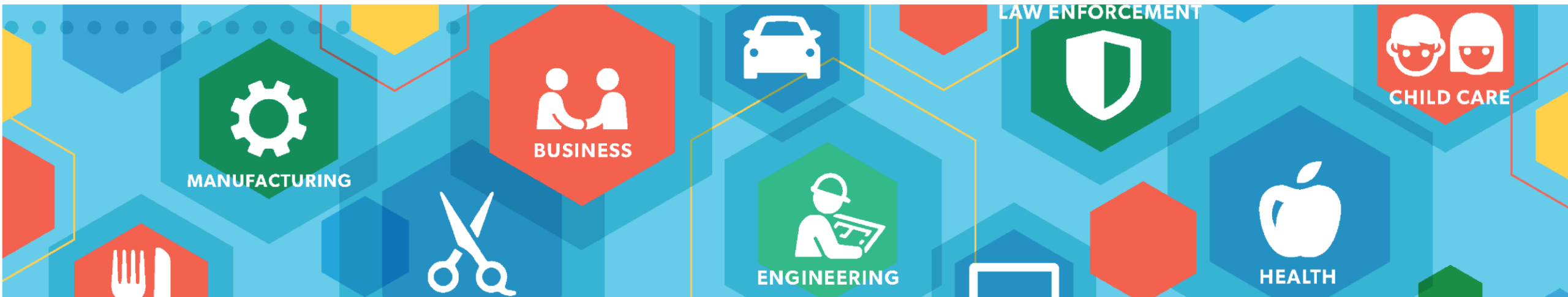
[CTE video available on FPC website.](#)



South County CTE HUB - Potential Programs

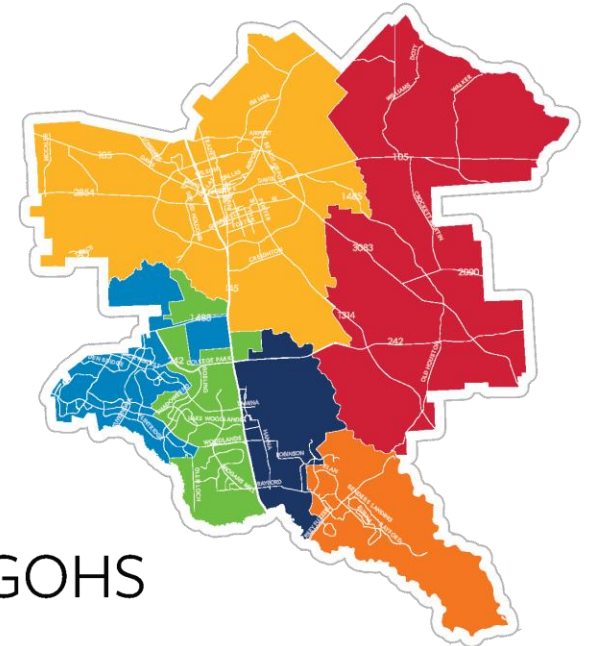
- Medical Professions/Health Care
- Emergency Medical Technician/Certified Clinical Medical Assistant
- Cyber Security Pathway
- Auto Tech/Diesel Mechanics
- Aviation/Aeronautical Engineering
- District Robotics Lab

Additional programs will be identified based on demand/occupations/local business need



North County/District Livestock Facility

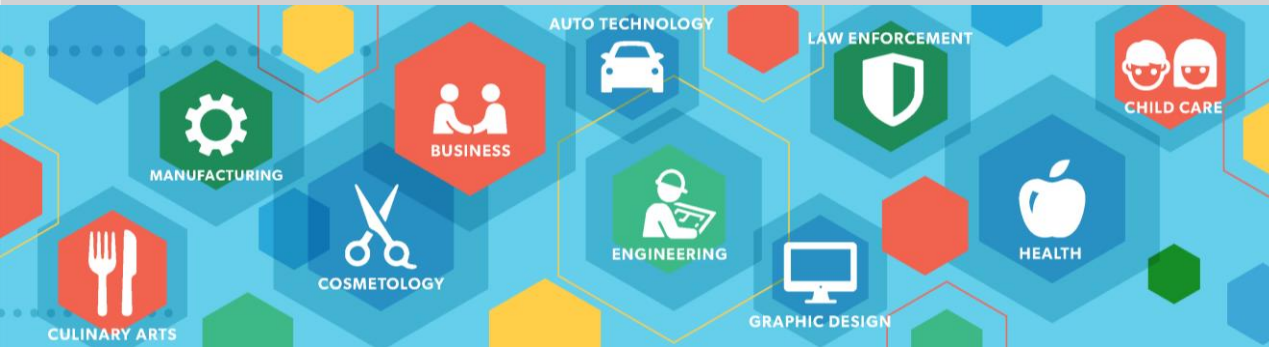
- Goal is to provide a location for CHS and CCHS students to explore their supervised agriculture experiences; serve as District facility as needed
- Will be located in north Conroe adjacent to the Montgomery County Fairgrounds
- Features include:
 - 15 cattle stalls
 - 52 pig stalls
 - 26 sheep/goat stalls
 - two animal wash areas
 - tractor storage
 - a workroom
 - space for a future poultry barn
- Current CISD facilities include: a facility near Budde Road for TWHS and TWCPHS and facility near ORHS serving ORHS and GOHS







CTE South County Hub Estimate



\$8.83 M

ORHS 9th Grade Conversion

North County/District Livestock Facility

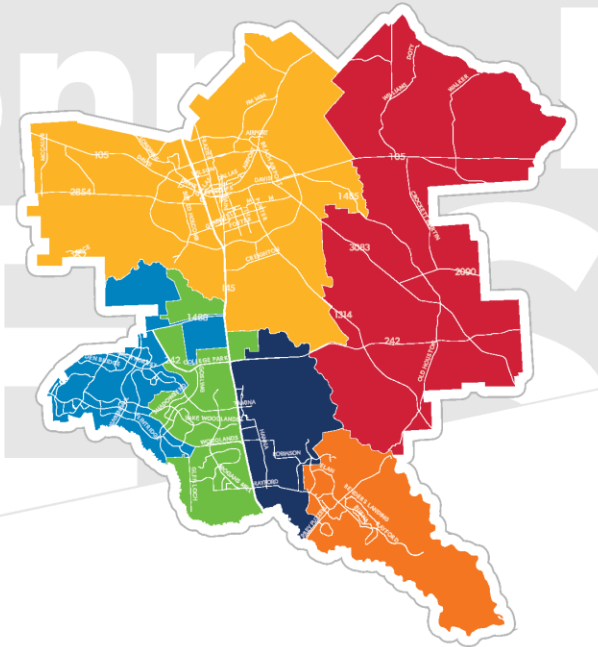


\$5 M



CONROE
INDEPENDENT
SCHOOL DISTRICT

Early College High School

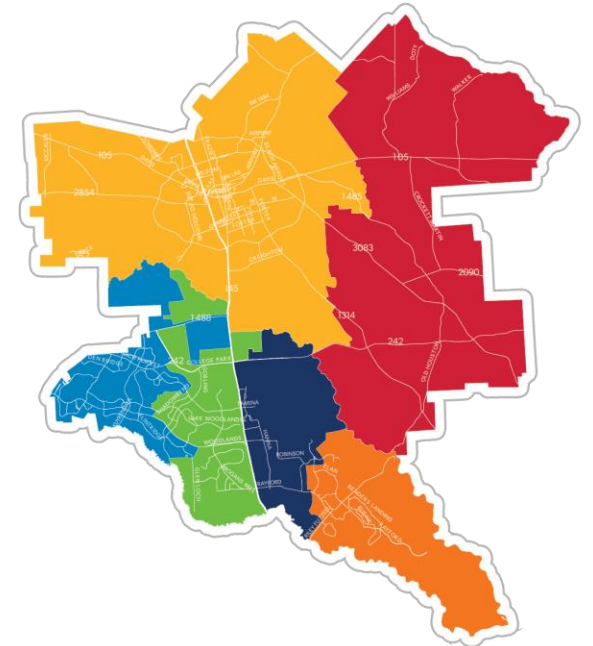


Early College High Schools

Innovative high schools that allow students who are least likely to attend a college an opportunity to earn a high school diploma and 60 college credit hours

Early College High Schools:

- Provide dual credit at no cost to students
- Offer rigorous instruction and accelerated courses
- Provide academic and social support services to help students succeed
- Increase college readiness, and
- Reduce barriers to college access
- Targets 400 students



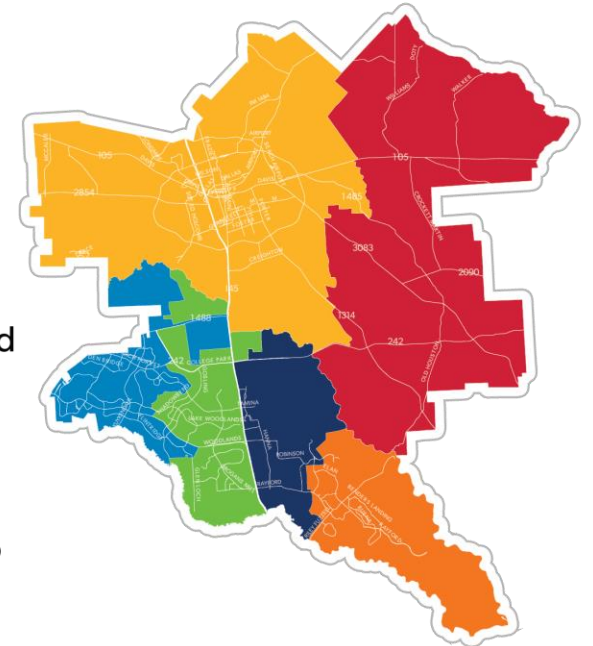
Early College High School: Blueprint

Target Population:

- students in grades 9-12 who are at risk of dropping out of school, those who might not otherwise go to college, or students who are first generation college goers

Partnership Agreement:

- The Early College High School shall have a current, signed Memorandum of Understanding (MOU) for each year that:
 - Defines the partnership between the school district (s) and the institution (s) of higher education and addresses topics including, but not limited to, the ECHS location, transferability of college credit between a 2-year and 4-year institution, the allocation of costs for tuition, fees, and textbook; and student transportation
 - The school district shall pay for college tuition (for all dual credit courses, including retakes), fees (including TSI administration fees), and required textbooks to the extent those charges are not waived by the partner IHE;
 - Requires joint decision-making procedures that allow for the planning and implementation of a coherent program across institutions; and
 - Includes provisions and processes for collecting, sharing and reviewing program and student data to assess the progress of the ECHS



Early College High School: Blueprint

P-16 Leadership Initiatives

- The school district and institution of higher education partners shall develop and maintain a leadership team that meets regularly to address issues of design, implementation, ongoing implementation, and sustainability. Membership should include the Early College High School leader and individuals with decision-making authority from the district and IHE.

Curriculum and Support

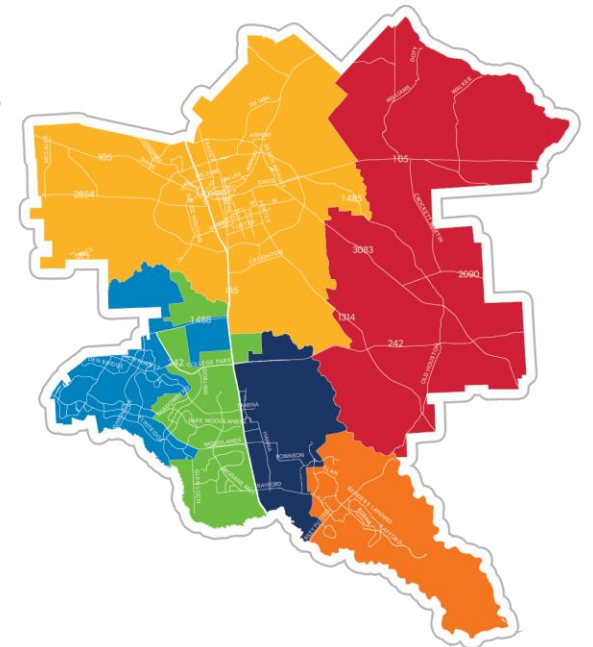
- The Early College High School shall provide a rigorous course of study that enables a participating student to receive a high school diploma and complete the Texas High Education Coordinating Board's core curriculum (TAC §4.28), obtain certifications, or earn an associate's degree, or earn at least 60 credit hours toward a baccalaureate degree during grades 9-12. The ECHS shall provide student with academic, social, and emotional support in their course of study.

Academic Rigor and Readiness

- The Early college high School shall administer a Texas Success Initiative (TSI) college placement exam (TAC §4.53) to all accepted ECHS students to assess college readiness, design individual instructional support plans, and enable students to begin college courses bases on their performance on the exam.

School Design

- The Early College School must provide a full-day program at an autonomous high school, an IHE liaison with decision-making authority, and a highly qualified staff with support and training.



Early College High School: Surrounding Districts

Aldine ISD ● Victory Early College High School

Houston ISD ● Challenge Early College High School

● East Early College High School

● North Houston Early College High School

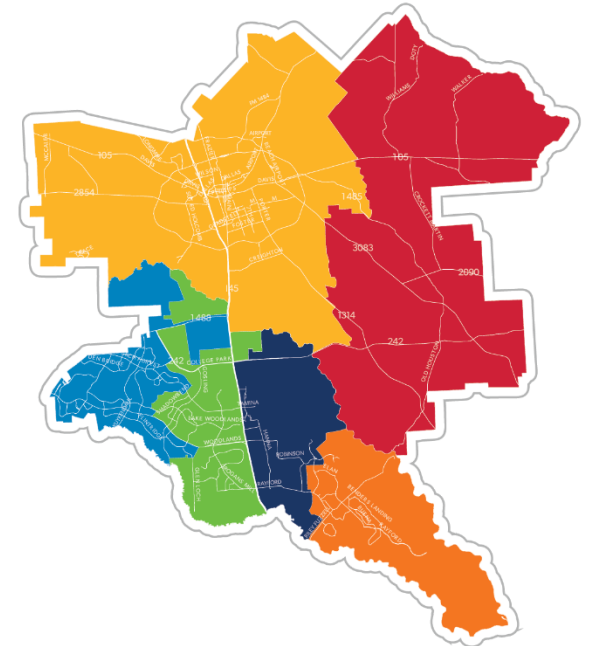
● South Early College High School

Humble ISD ● Quest Early College High School

New Caney ISD ● Infinity Early College High School

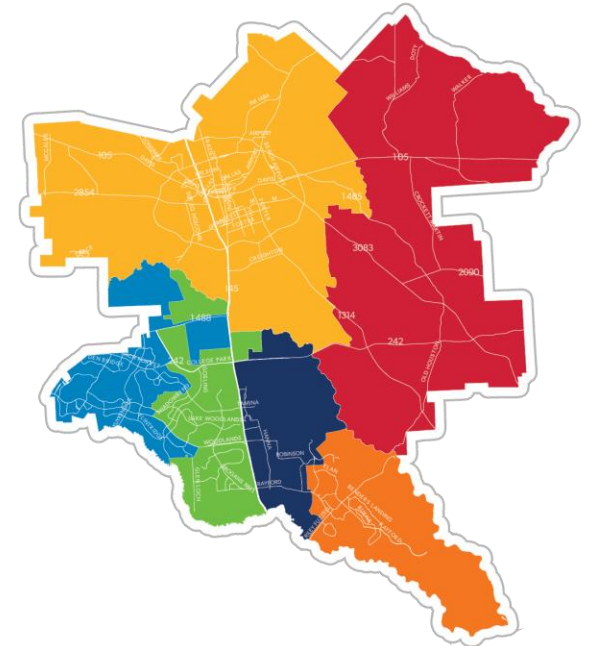
Splendora ISD ● Splendora Early College High School

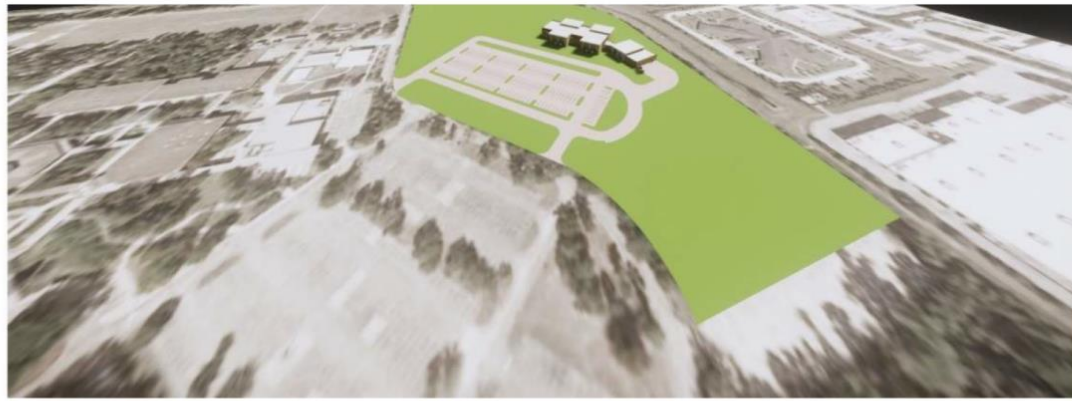
Spring ISD ● Spring Early College Academy (formerly Southridge)



Early College High School in CISD

- Students will complete high school requirements while earning College credit
- Potential site at Lone Star College Montgomery Campus to build a dedicated campus
- Anticipated 80,000 square foot campus
- Open with 100 students and grow by 100 each year until reaching 400 student goal
- All staff serve students including administrators, counselors, core and elective teachers
- Students would attend Lone Star College Montgomery for many of their electives





Spatial Program for Early College High School

	Net Assigned (S.F.)	No.	Total Net Assigned S.F.	Description/Notes
1 Administration				
			4,315	Admin Total
2 Classrooms				
2.1	760	10	7,600	General Classroom
2.2	1,200	1	1,200	Fine Arts Lab Includes flat files + 100 SF for storage
2.3	1,500	1	1,500	PE / Gymnasium - fitness center Layout provided by Aldine ISD (83 x 68.5)
2.4	400	1	400	Locker Rooms (G+6)
2.5	450	1	450	PE Storage (30 x 15)
2.6	200	1	200	Coach's Office
2.7	0	0	0	Coach's Storage
2.8	300	3	900	Teaching Breakout Areas Locate adjacent to classrooms for educational opportunities; feature ATD liked at site tour of Victory
			12,250	Classroom Total
3 Science Laboratories				
3.1	1,300	2	2,600	Biology / A&P Teaching Lab
3.2	100	2	200	Specimen Room Open Shelving
3.3	600	2	1,200	Biology / A&P Prep Room Cabinets, refig, dishwasher
3.4	1,300	1	1,300	Chemistry Teaching Lab
3.5	0	1	0	Chemistry Prep Cabinets, refig, dishwasher
3.6	100	1	100	Chemical Storage Room
3.7	1,300	1	1,300	Physics Teaching Lab
3.8	110	1	110	Physics Storage
			6,810	Science Laboratories Tot
4 Computer Laboratories				
			2,300	Computer Laboratories Tot
5 Support				
			6,550	Support Tot
6 Site				
			800	Site Total

Program Area Totals:	Total Net S.F.	33,025	ASF
	Total Gross S.F. (1.40 factor)	46,235	GSF
			Circulation, walls, restrooms & MEP
Estimated Building Cost	\$840	\$15,719,900	
All in cos		\$19,649,875	



EARLY COLLEGE HIGH SCHOOL





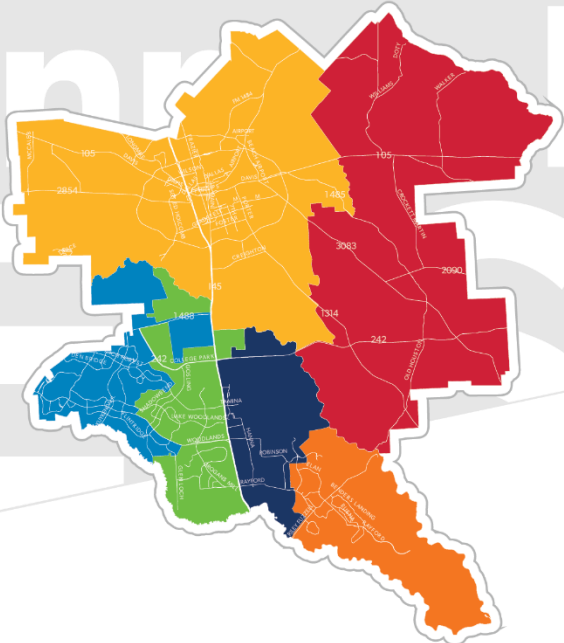
Early College Estimate

\$25 M



CONROE
INDEPENDENT
SCHOOL DISTRICT

Athletics



Swimming in CISD

305

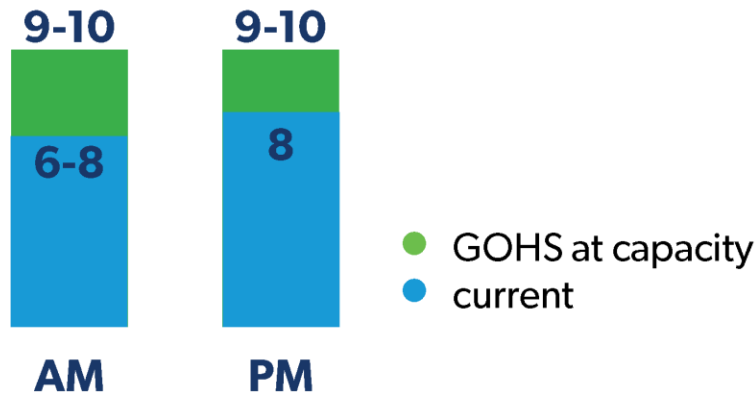
student swimmers currently

355+

student swimmers when
Grand Oaks HS reaches capacity

400

lane meters of water



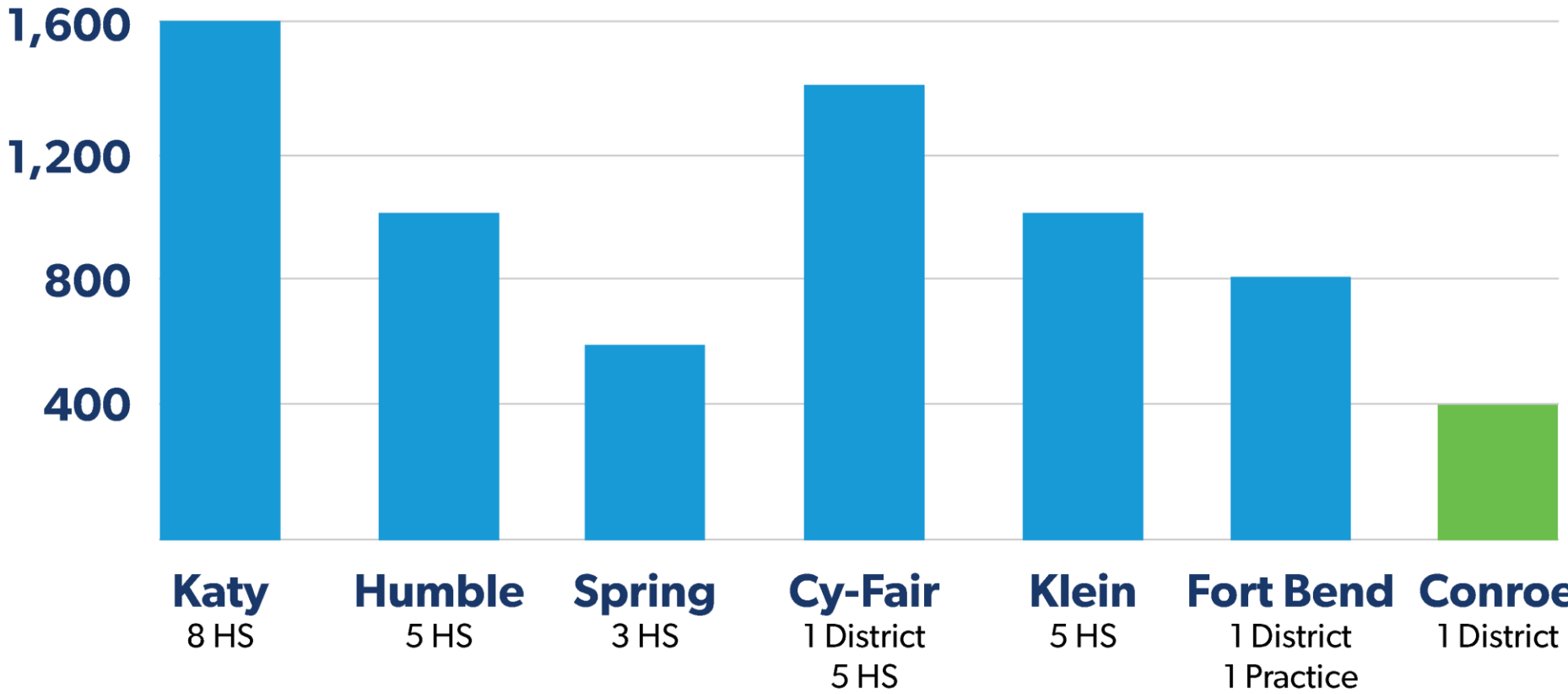
- Ideal** ● 4 or less swimmers
- Manageable** ● 5-6 swimmers
- Excessive** ● 7 or more swimmers

Safety Implications

- Too many swimmers crowded into same lane causes collisions and injuries
- Overcrowded lanes create slow moving workouts and does not allow for proper training to take place.

Peer District Water Comparison

(lane meters of water)

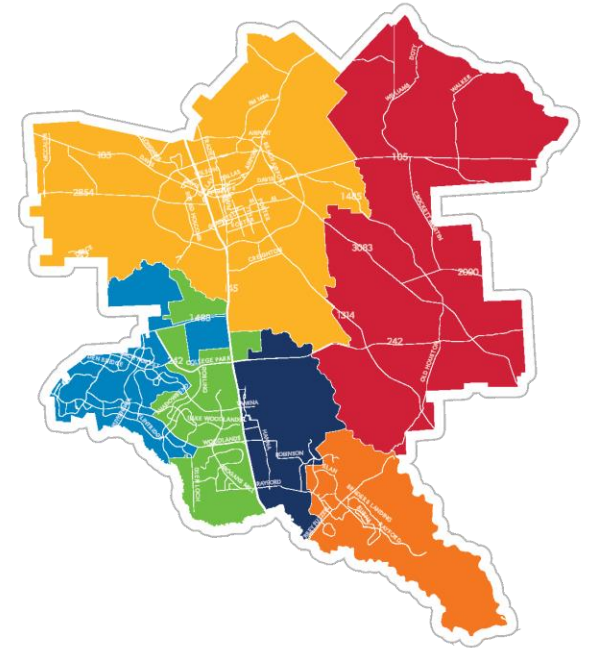


Benefits of Adding an Outdoor Pool

Increased Practice Space for High School Teams

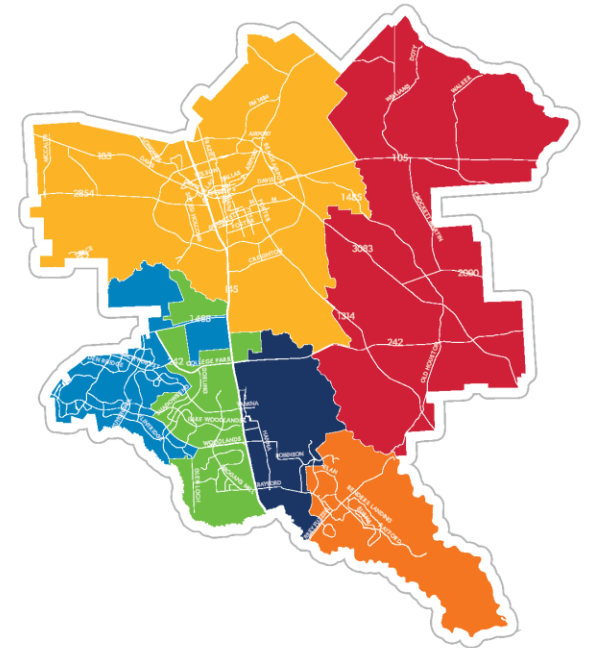
Adding an additional 8 lane / 50 meter pool which can convert to 20 short course /25 yard lanes

- Allows all 6 high school teams opportunity to practice at the same time
- Allows teams to practice water polo without disrupting other teams swimming space



Artificial Turf

- Provides a consistent reliable surface for many activities
- Fields are like classroom spaces for physical activities
 - used by more students daily than any space except the cafeteria
- Our large campuses have many different activities requiring field space including:
 - Football
 - Soccer
 - Marching Band
 - JROTC
 - Drill Team
 - Track & Field
 - Lacrosse
 - Rugby



Artificial Turf

After-School Campus Competition Field Use during football season

- Monday – Junior High Football (2 games)
- Tuesday – Junior High Football (2 games)
- Thursday – High School Sub-varsity Football (2 games)

Soccer Season

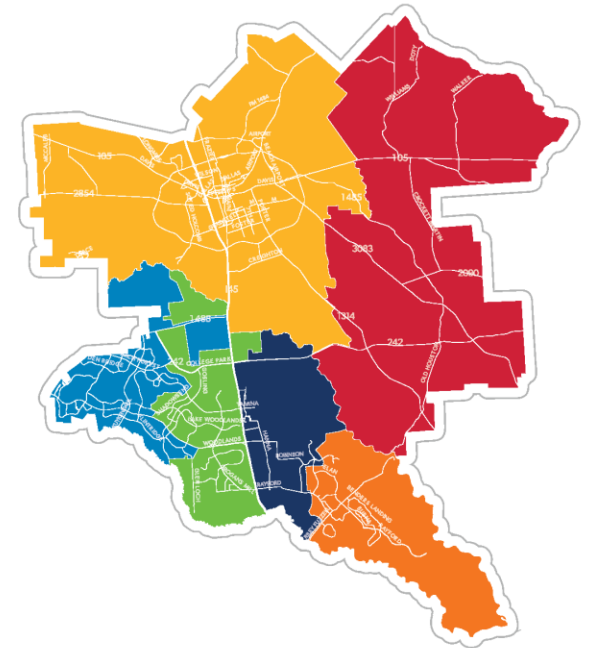
- Tuesday – Games (2/3 games)
- Friday – Games (2/3)

Tournament Season

- First 3 weeks are invitational tournaments
- Schools hosting tournaments may play up to 6 games per day per field.
- Some tournaments moved off campus to playable turfed fields

Baseball and Softball

- Provides surfaces for activities in addition to softball and baseball
- football, soccer, JROTC, Color Guard, etc.



Natural Turf vs. Synthetic Turf

-  **PLAYING TIME**
-  **MAINTENANCE**
-  **REVENUE GENERATION**
-  **ENVIRONMENTAL ADVANTAGES**
-  **ROI**
-  **COMMUNITY USE**
-  **LAND UTILIZATION**

NATURAL GRASS

650-800 hours of play per year with rest between heavy play and inclement weather

Requires mowing, watering, seeding, fertilizing, pesticides, and aeration which increases labor costs

Less opportunities for events due to the rest time required between play time or inclement weather

Preserves natural environment of the soil and vegetation while sequestering carbon and releasing oxygen, requires pesticides

Costs less for the initial installation with slower ROI as a result of limited hours for usage and increased maintenance costs

Cannot withstand heavy use for multiple sports and events on one field

Use can be limited due to necessary rest time

SYNTHETIC TURF

Unlimited hours of play per year with no rest required

Requires cleaning and topping off infill levels periodically through the life cycle

Can be used 24/7/365 for sports, community events or other revenue generating activities

Promotes water conservation 440,000-1,000,000 gal. per year depending on climate and soil conditions and requires no pesticides

Pays for itself faster due to facility rentals and lower maintenance costs

Will allow for multiple sports and events on one field

Can achieve more use with the same amount of space

EXPENSE	GRASS FOOTBALL / SOCCER	SYNTHETIC FOOTBALL / SOCCER	SYNTHETIC BASEBALL / SOFTBALL
Initial Installation/ Re-Crown & Re-Sod	\$350,000	\$850,000	\$1.5 Million
Maintenance Labor	\$27,000/year	\$12,500/year	\$12,500/year
Equipment	\$4,000/year	\$0	\$0
Fertilizer	\$8,000/year	\$0	\$0
Top Seed	\$5,500/year	\$0	\$0
Water (varies by location)	\$15,000/year	\$0	\$0
Line Paint	\$3,500/year	\$0	\$0
Total Annual Cost	\$63,000/year	\$12,500/year	\$12,500/year
TEN YEAR TOTAL	\$980,000	\$975,000	\$1,625,000
Usage (number of hours)	4,800	16,000	16,000
COST PER HOUR	\$204.17	\$60.93	\$101.56

Natural Turf vs. Synthetic Turf

Outdoor Practice Pool



\$10 M

Convert Natural Turf to Synthetic Turf

for 5 high schools

Football/Soccer/Band Field

\$8 M

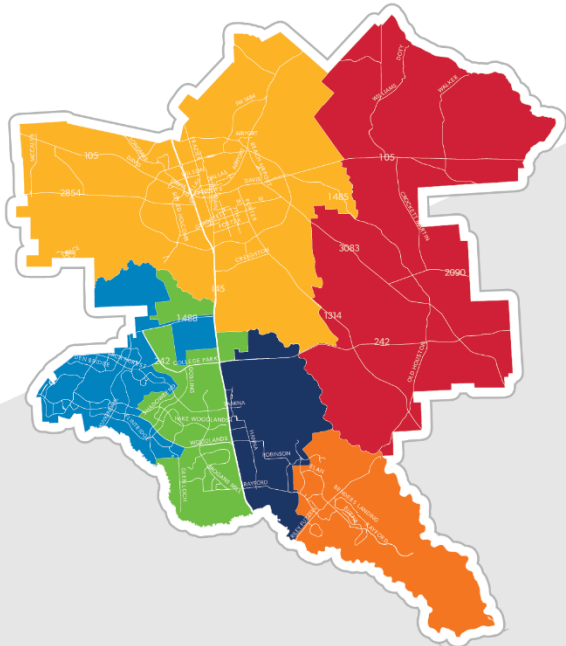
Baseball & Softball

\$15.8 M



CONROE
INDEPENDENT
SCHOOL DISTRICT

Facilities Planning Committee



Meeting #3

October 24, 2018

4:30-6:30 PM

Conroe High School