



Broadway Elementary

Portable Classroom Update

3/21/2023

Existing Portable Overview

We currently have portable “buildings” that exist placed on campuses as either a:

- Single classroom
 - 161 buildings (161 classrooms)
- Double classroom
 - 35 buildings (70 classrooms)

Current Portable Campus Locations

<u>Summary</u>	<u>Classrooms</u>
Elementary	148
Intermediate	16
Jr. High	31
High School	35
TOTAL	230

Campuses Slated To Receive Additional Portable Classrooms This Spring or Summer (As of 3/6/23)

Elementary – 61 classrooms

Anderson Elementary	Austin Elementary	Birnham Woods Elementary
Bradley Elementary	Buckalew Elementary	Bush Elementary
Creighton Elementary	Deretchin Flex	Galatas Elementary
Hailey Elementary	Houser Elementary	Kaufman Elementary
Lamar Elementary	Oak Ridge Elementary	Patterson Elementary
Powell Elementary	Runyan Elementary	Suchma Elementary (Spring 2023)
Wilkinson Elementary		

Intermediate – 2 classrooms

Cox Intermediate

Junior High – 3 classrooms

Stockton Junior High

High School – 4 classrooms

Grand Oaks High School
(Spring 2023)

Recent Portable Classroom Additions Suchma Elementary



Portables
Shown are
Doubles

February 2023

West Side of Building



Portables
Shown are
Doubles

Summer 2022

East Side of Building

Recent Portable Classroom Additions Grand Oaks High School

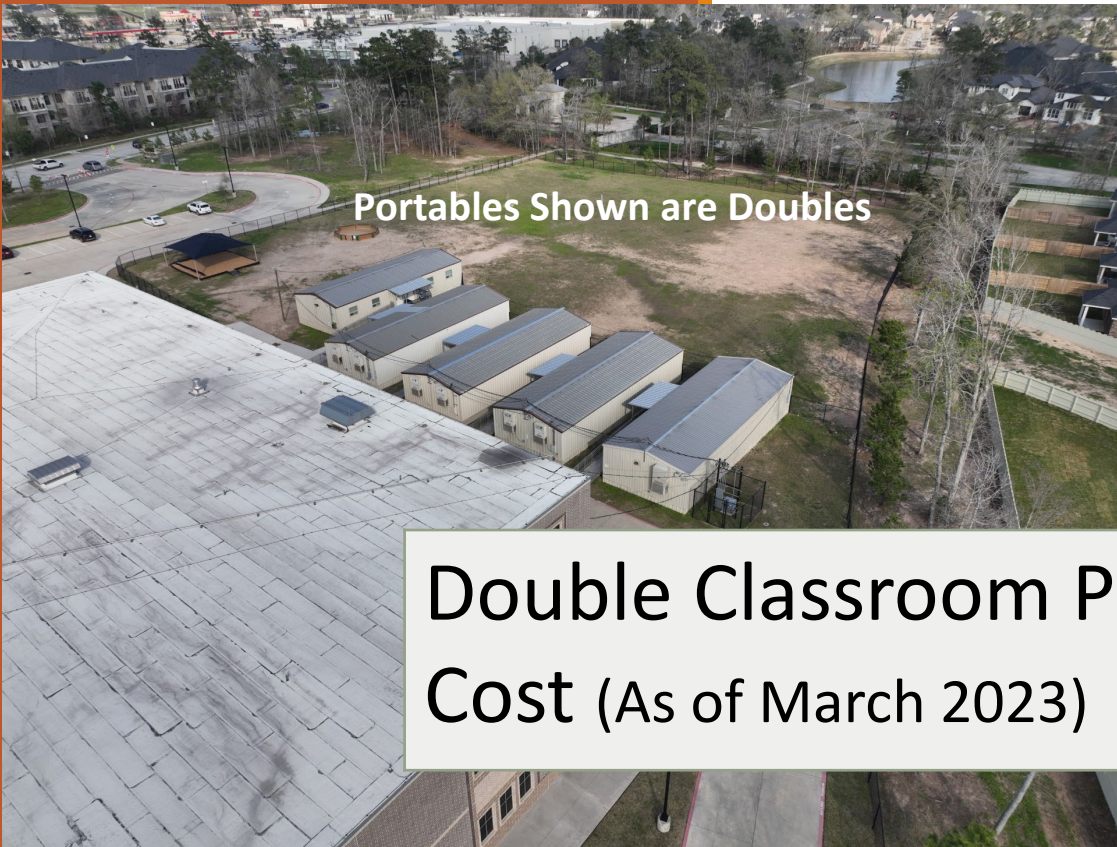


North Side of Building (Summer 2021)



South Side of Building (Spring 2023)

Double Classroom Portable Building Cost (Just the Building)



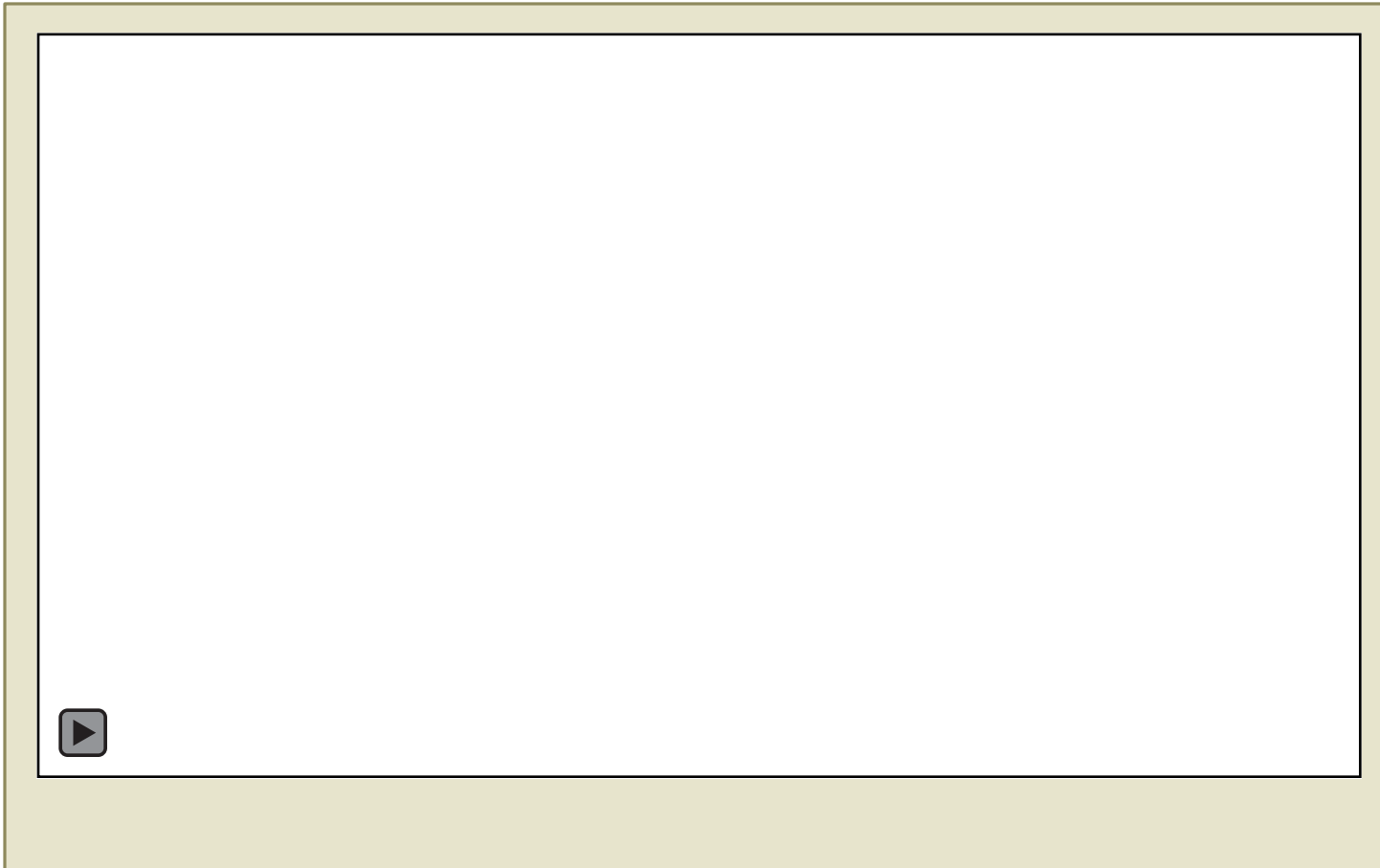
Portables Shown are Doubles

**Portable Building - New approximately 24' x 64' -
Double classroom with closets, HVAC and LED lighting.**

**Double Classroom Portable Building
Cost (As of March 2023)**

\$135,820

Portable Fencing, Sidewalks, Decks, Awnings & Ramps



**Estimated Cost
Per Portable Building**

\$48,000

Portable Classroom Furniture Costs Elementary & Secondary



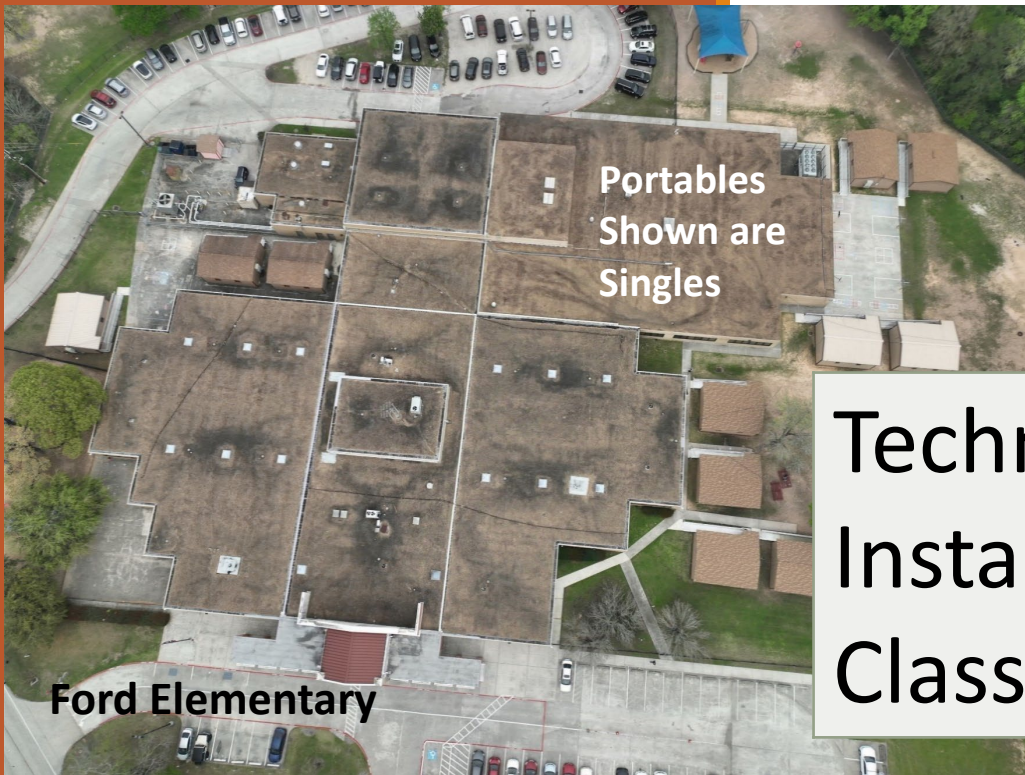
Elementary Furniture (1) Set

\$11,040

Secondary Furniture (1) Set

\$9,290

Portable Classroom Technology Costs



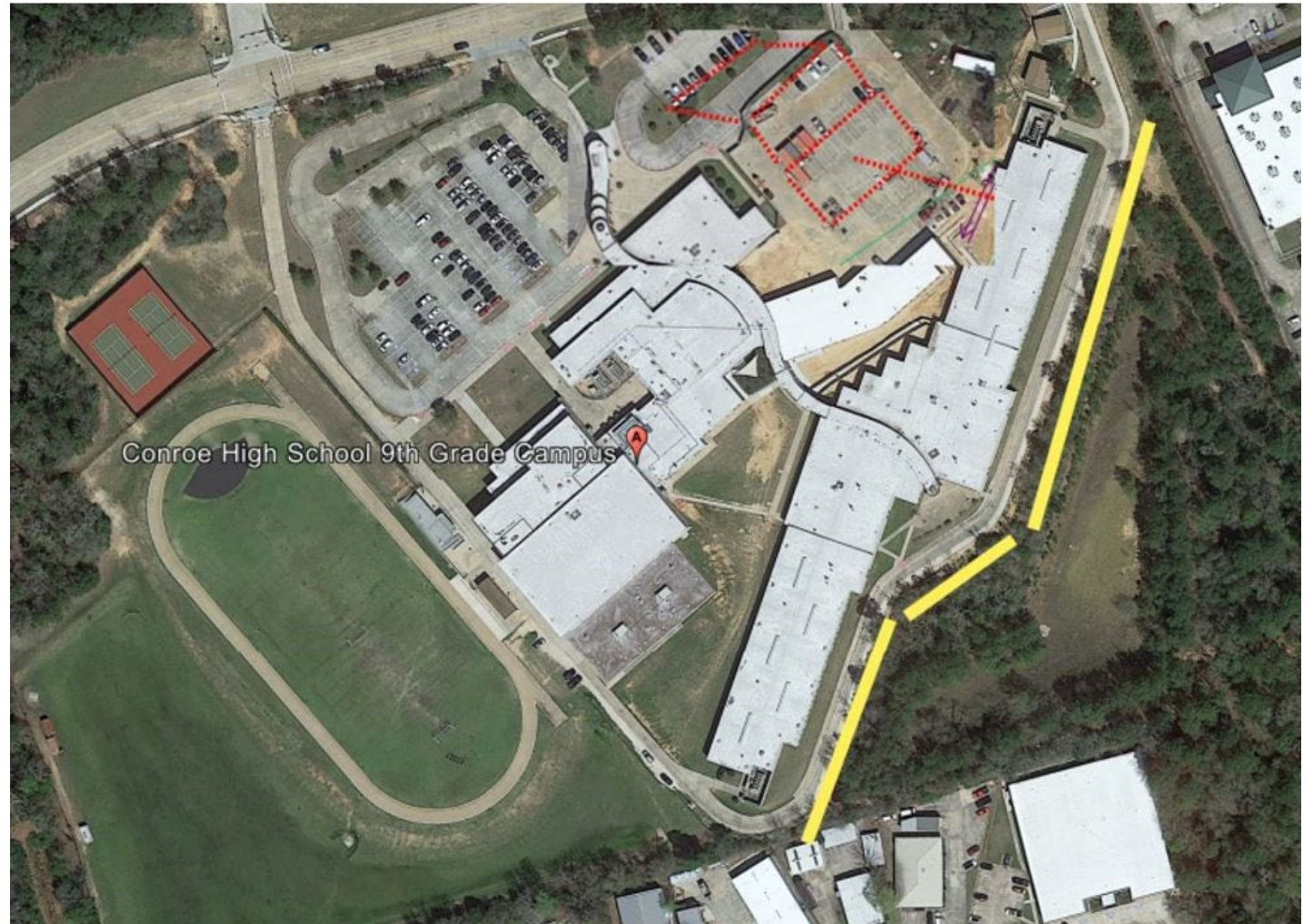
Technology Equipment &
Installation Per Individual
Classroom

\$17,509

- If electric service is available at the site: \$25,000 - \$50,000
- Electric tree (shown below) can supply power to up to 14 classrooms
- If electric service is unavailable, costs can run up to \$500,000 (See CHS-9 image to the right)



Portable Classroom Electrical Costs



Cost of Moving Existing Portable Buildings

Approximately **\$40,000** per building includes:

- Moving
- Sidewalks
- Fencing
- Ramps & Awnings

Portable Classroom Placement Need Trend

Number of Additional Portable Classrooms Required	Year
70	2023/2024
37	2022/2023
24	2021/2022



Projected
Additional
Portable
Classrooms
Needed Through
School Year 2027-
2028 with No
Additional
Permanent
Buildings Added

Schools	TOTAL
High Schools	107
Junior High	57
Intermediate	36
Elementary	236
Total	436

KEY TAKEAWAYS



- Our need for portable building classrooms is growing rapidly paralleling our increased student growth
- We are at the point of exhausting our ability to move existing portable classrooms from campus to campus in the summers as a result of District-wide capacity being reached or exceeded across the majority of campuses
- It's all connected
 - Playground space and condition
 - Teacher satisfaction
 - Weather relocation
 - Limitations
 - Bathrooms
 - Cafeterias
 - Hallways
 - Car line