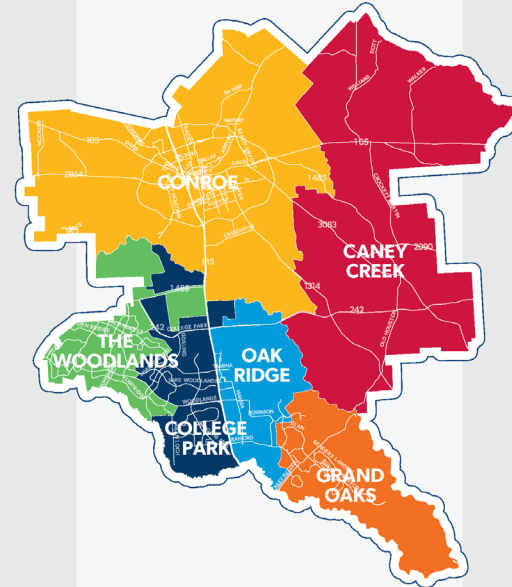




**CONROE**  
INDEPENDENT  
SCHOOL DISTRICT

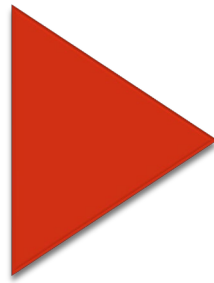
2023-2024  
**Bartlett  
Elementary**

**ABC**  
Attendance Boundary Committee




# COMING SOON.....

The Conroe  
Independent School  
District will be  
opening a new 950-  
student elementary  
school in August of  
2024



Janet K. Bartlett  
Elementary is  
anticipated to serve  
grades PK-4 and be  
located at 11255  
Cielo Drive, Conroe,  
Texas 77303

# Committee Members

 <b>Committee Members</b>	
<b>Elementary Campus</b>	<b>Committee Member</b>
Anderson Elementary	Laura Quinones, Principal Cristina Ventura, Parent Representative
Armstrong Elementary	Theresa Waller, Principal Xochiquetzal Franko, Parent Representative
Austin Elementary	Katie Meaux, Principal Janith Cooper, Parent Representative
Creighton Elementary	Patricia Thacker, Principal Mayra Salgado, Parent Representative
Hope Elementary	Christina Upshaw, Principal Shawn Ireland, Parent Representative
Houston Elementary	Chelsea Fuller, Principal Yuritzi Cardenas, Parent Representative
Milam Elementary	Paola Gorman, Principal Jackie Nesby, Parent Representative
Patterson Elementary	Melissa Ralston, Principal Crystal Wineinger, Parent Representative
Reaves Elementary	Nicole Walker, Principal Delia Guadalupe Tijerina Trevilno, Parent Rep
Runyan Elementary	Anel Salas, Principal Jonathan Beadle, Parent Representative
Rice Elementary	Denise Coello, Principal Allie Torres, Parent Representative
San Jacinto Elementary	Latory Jacobs, Principal Angela Reyes, Parent Representative
Wilkinson Elementary	Cassie Hertenberg, Principal Amy Redman, Parent Representative
<b>Intermediate Campus</b>	<b>Committee Member</b>
Bozman Intermediate	Joe Roland, Principal
Cryar Intermediate	John McClendon, Principal
Grangerland Intermediate	Serena Pierson, Principal
Travis Intermediate	Charita Smith, Principal
Veterans Memorial Intermediate	Amber DeBeaumont, Principal

<b>Administration Voting Members</b>	<b>Committee Member</b>
Deputy Superintendent	Dr. Bethany Medford
Assistant Superintendent – Secondary	Dr. Jeff Stichler
Assistant Superintendent – Elementary	Dr. Shellie Winkler
Assistant Superintendent – Operations	Mr. Chris McCord
<b>Administration Non-Voting Members</b>	<b>Committee Member</b>
District Administrator	Dr. Chris Hines
Administrative Director-Information Services	Dr. Jarod Lambert
Administrative Director CODP	Rodrigo Chavez
Director of Communications	Sarah Blakelock
Professional Communications Specialist	Russ Reneau
Director of Transportation	Juan Melendez
School Safety Specialist	Steve Muir
Professional Information System Analyst	Regina Woody
Secretary Deputy Superintendent	Porsche Spurlock
Secretary Asst Superintendent	Cindy Smith



# WHAT ARE WE TRYING TO ACCOMPLISH IN THIS PROCESS?

## OBJECTIVES:

- To develop an attendance boundary to populate Bartlett Elementary while still preserving some campus capacity for the future growth of the facility
- To provide overcrowding relief to Caney Creek and Conroe feeder elementary campuses most over capacity

# CURRENT RENDERING - BARTLETT ELEMENTARY





# AERIAL VIEW - BARTLETT ELEMENTARY



August 2023

# WHY IS THIS BOUNDARY PROCESS CHALLENGING?



Schools are communities

Families often have a history of attending a particular school

Families often choose where they live to attend a particular school

This is the last elementary school in the northern Caney Creek and Conroe feeders area to be constructed in the near future

# ZONING GOALS

To plan and allow for future growth through zoning of the existing and new campuses

To draw attendance boundaries which support the efficient and effective use of school facilities and resources, while maintaining our fiscal responsibility to the public

To always be mindful that providing for the education and welfare of all students is our mission

To communicate information about possible zoning changes to families that may be impacted and to give everyone an opportunity to provide feedback through community meetings, the district website, and campuses

To reduce the enrollment at overcrowded campuses

To establish an ABC that will develop proposed attendance boundary scenarios, will present the scenarios for input at community meetings, and develop a recommended zoning plan for the Board of Trustees



# ZONING CONSIDERATIONS

Many considerations are given during the process. Possible considerations for the ABC include:

Demographic  
factors

Community input

Capacity of  
campuses

Feeder pattern &  
school history

Location of existing  
neighborhoods &  
communities

Geographical  
proximity

Locations of natural or  
other boundaries such as  
major thoroughfares,  
freeways, railroad tracks,  
bodies of water, etc.

Minimizing the  
impact on families

Number of times the  
area has been recently  
rezoned or the  
likelihood of rezoning  
in the future

Possible location of  
future schools


Projected future  
enrollment for  
campuses

Transportation  
patterns and  
considerations such  
as walking, busing,  
etc.



# POINTS OF EMPHASIS

We do not take the task of changing  
boundaries lightly



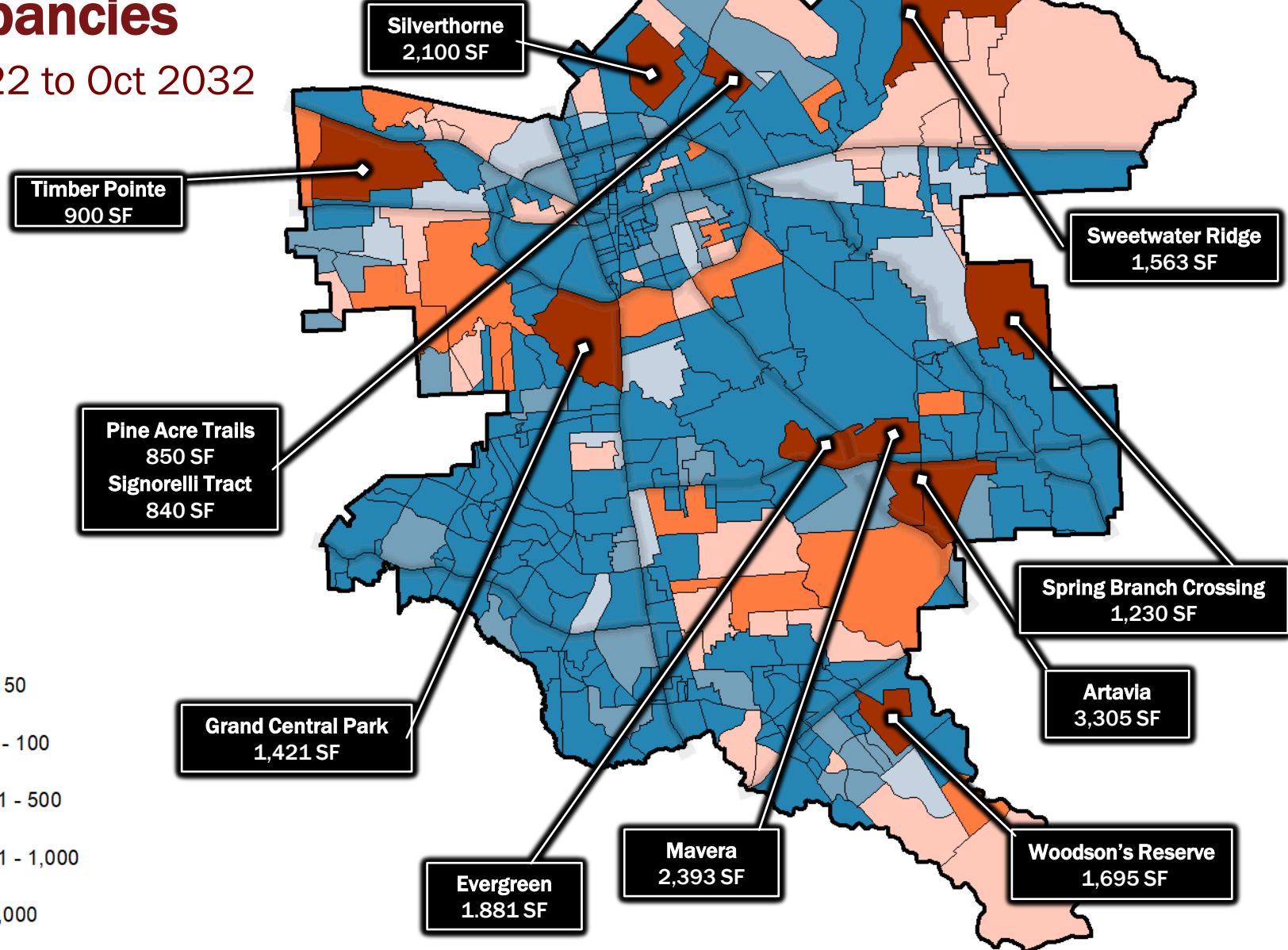
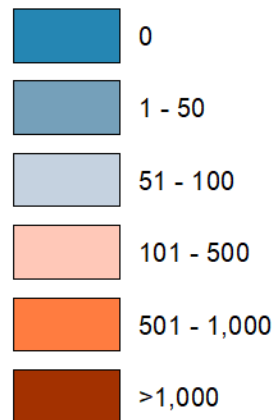
We are committed to providing a quality educational  
experience at all of our schools



We want to have a recommendation to the  
Board in January

# Projected Single-Family (SF) Occupancies

Oct 2022 to Oct 2032



INCLUDES MANUFACTURED HOUSING

# Largest Growth Subdivisions and Manufactured Home Communities

Oct 2022 to Oct 2032



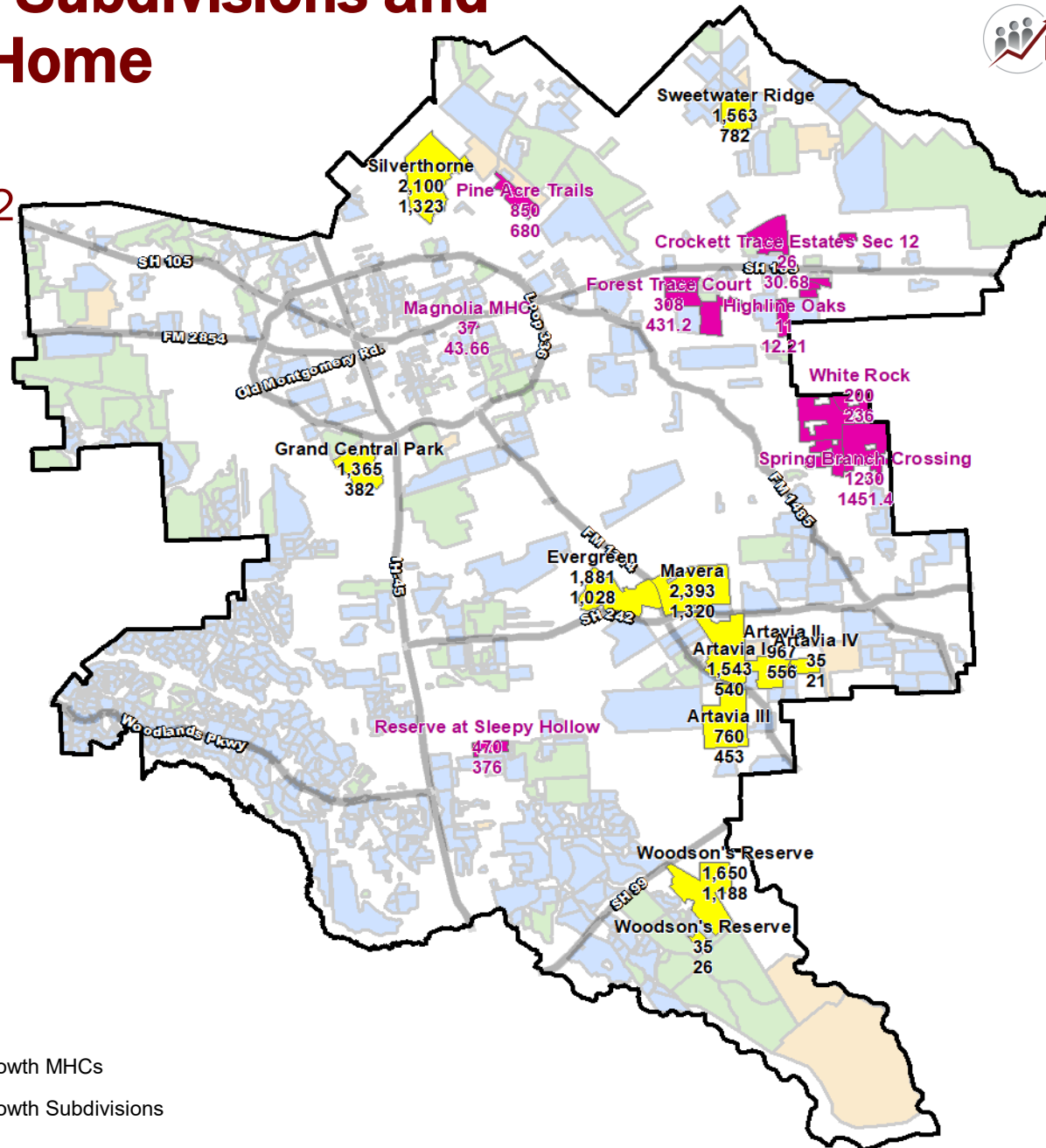
## Labels:

Development Name

Projected Housing Units

Projected EE-12 Students

## Single-Family



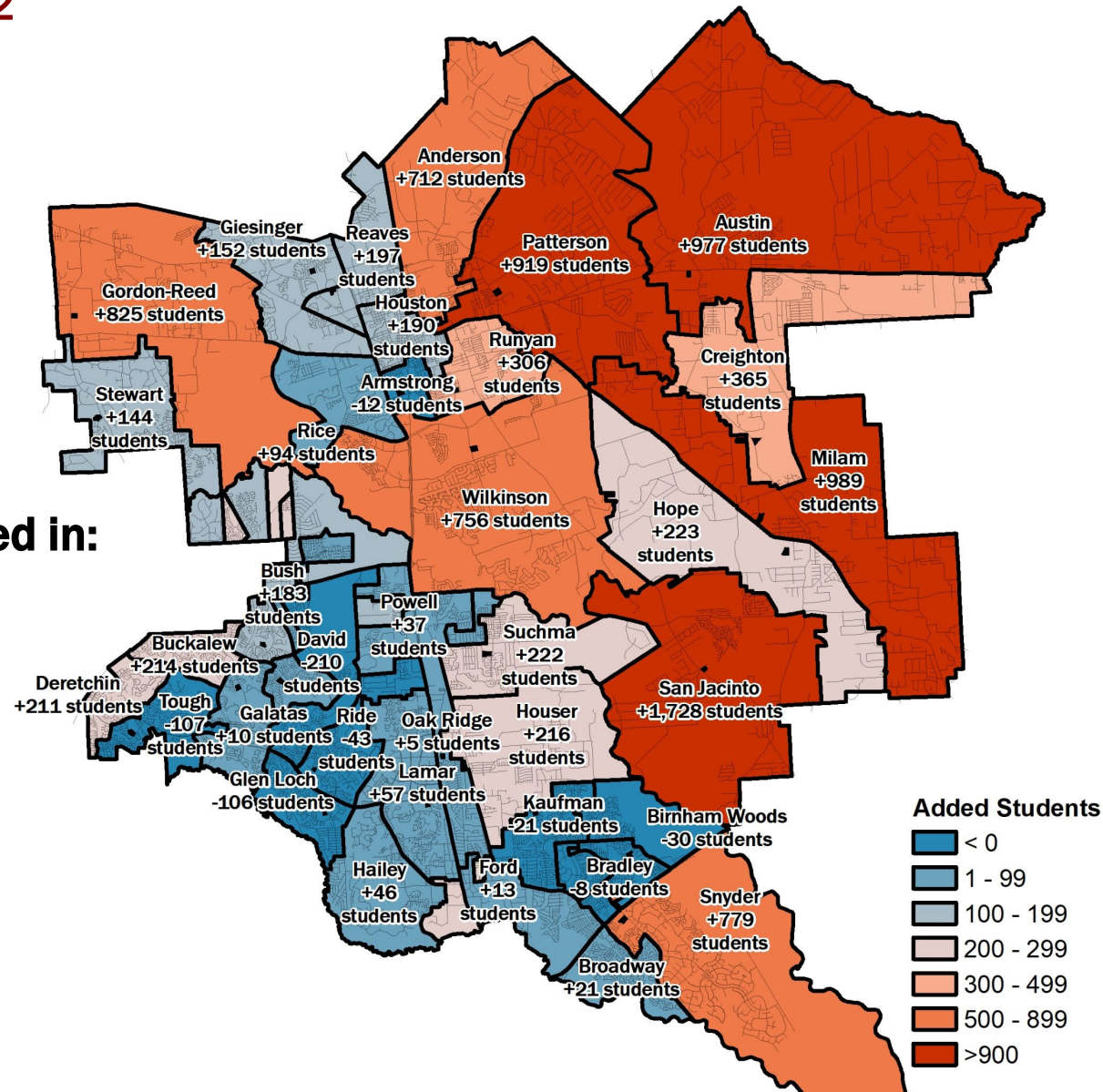
# Projected Growth in Elementary Students

Oct 2022 to Oct 2032



**Most growth projected in:**

San Jacinto  
Milam  
Austin  
Patterson  
Anderson  
Gordon-Reed  
Wilkinson  
Snyder







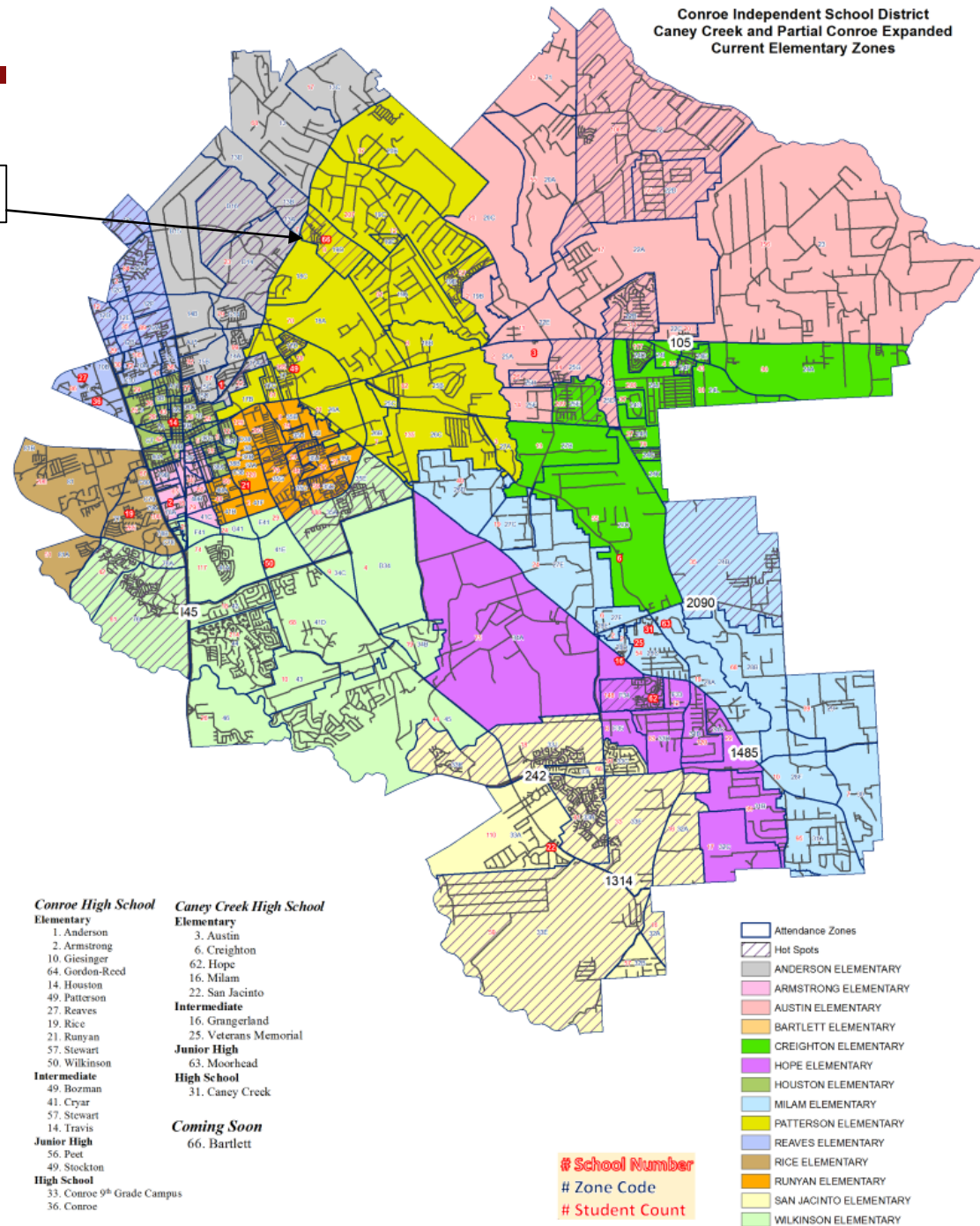
# CANEY CREEK AND CONROE FEEDER ELEMENTARY CAMPUSES APPROACHING OR OVER CAPACITY

Elementary	Year Built	Capacity	9/7/23 Enrollment	9/7/23 Capacity %
Anderson	1994	700	709	101%
Armstrong	1969	650	619	95%
Austin	1952	875	1016	116%
Creighton	1980	650	991	152%
Giesinger	1990	650	727	112%
Patterson	2014	925	1067	115%
Reaves	1974	675	750	111%
Rice	1978	625	583	93%
Runyan	1967	575	680	118%
Wilkinson	2009	900	960	107%



# COMBINED CURRENT CCHS & PARTIAL CHS ELEMENTARY FEEDER

Bartlett Elementary





# COMMUNITY PRESENTATIONS

## Community Presentation Dates

ABC presents a rezoning process to create new attendance boundaries and solicits input from the community via the web.

- The same presentation is available at two different times—virtual and in-person.

Oct. 10

6:00 PM

Live Virtual

Oct. 12

6:00 PM

Austin Elementary

The ABC presents various zoning scenarios developed by the ABC and solicits feedback.

- The same presentation is available at two different times—virtual and in-person.
- The in-person presentation is a come-and-go event where attendees can give feedback on proposed scenarios.

Nov. 7

6:00 PM

Live Virtual

Nov. 9

6:00 PM

Austin Elementary



# BOARD PRESENTATION DATES

Board Presentation Dates	
District Administration presents the Attendance Boundary Process to the Board of Trustees.	September 19, 2023
District Administration presents an update on the scenarios developed by the ABC at the Board of Trustees meeting.	November 14, 2023, & December 12, 2023
The ABC presents the zoning recommendation to the Board of Trustees.	January 16, 2024

# ATTENDANCE BOUNDARY PROCESS WEBPAGE

The screenshot shows the top navigation bar of the CISD website with links for 'Our Schools', 'Calendars', 'Careers', 'Contact Us', and 'CISD SSO'. Below this is a secondary navigation bar with the CISD logo and links for 'Parents/Students', 'Employees', 'Community', and 'MORE :'. The main content area features a large map of the district with colored attendance zones. Overlaid on the map is the text 'Attendance Boundary Process' and a large circular logo with a red apple and a blue 'C'. Below the map, there is a section titled 'Attendance Boundary Process' with a blue background. This section contains a paragraph explaining the process and a list of two attendance zones: 'Grand Oaks Feeder Elem. & Int. Attendance Zones' and 'Veterans Memorial Intermediate Attendance Boundary Process'. To the left of the main text, there is a small logo for the 'Conroe ISD ABC Attendance Boundary Committee'.

Our Schools Calendars Careers Contact Us CISD SSO Search

CONROE INDEPENDENT SCHOOL DISTRICT

Parents/Students Employees Community MORE :

Google translate English

HOME // ATTENDANCE BOUNDARY PROCESS

## Attendance Boundary Process

The Conroe Independent School District (CISD) continues to be one of the fastest growing school districts in Texas. In a school district growing as rapidly as CISD, it periodically becomes necessary to redraw the attendance boundaries of our schools. The two most frequent reasons for revisiting the boundaries of campuses are to accommodate the opening of new schools to meet the demands of our growing population, and to accommodate shifts/growth in populations that occur over time. CISD establishes an Attendance Boundary Committee (ABC) comprised of central administration, campus principals from the schools most likely to be impacted by any changes, and parent representatives selected by those campus principals for the purpose of developing and proposing possible zoning scenarios to the community for feedback. These scenarios are then refined based on that feedback and recommended as a zoning plan to the Board of Trustees.

### Attendance Boundary Process

Grand Oaks Feeder Elem. & Int. Attendance Zones

Veterans Memorial Intermediate Attendance Boundary Process

<https://www.conroeisd.net/committee/attendance-boundary-process/>



# QUESTIONS



**CONROE**  
INDEPENDENT  
SCHOOL DISTRICT